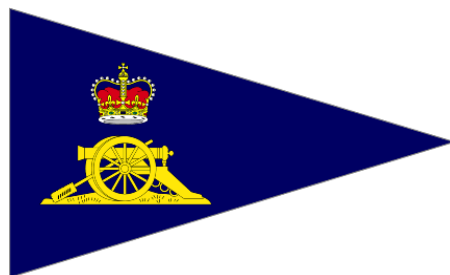


ROYAL ARTILLERY YACHT CLUB



OFFSHORE REGATTA 2016

**THE RAYC OFFSHORE REGATTA HELD AT
THE ROYAL SOLENT YACHT CLUB**

SATURDAY 10TH & SUNDAY 11TH SEPTEMBER

NOTICE OF RACE & SAILING INSTRUCTIONS

RAYC COMMITTEE

Admiral	General the Lord Richards of Herstmonceux, GCB, CBE DSO, ADC Gen
Commodore	Brigadier LK Ford MBE
Vice Commodore	Lieutenant Colonel C Gent RA
Rear Commodores	Major N Webber RA (Offshore) Major C N P Walsh RA (Dinghies) Major AJ Greenfield RA (Windsurfing)
Honorary Rear Commodores	Lt Col P A J d'Apice Lt Col R H Kidner Lt Col L McCormack

LIST OF CONTENTS

General

Organising Authority	1
Rules	2.1 – 2.2
Safety & Conditions of Entry	3.1 – 3.3
Classes to Race	4.1
Schedule of Races	5.1 – 5.2

<u>Sailing Instructions for Folkboat, XOD and YOD Classes</u>	6.1
--	-----

Sailing Instructions for Cruiser Classes

Notices to Competitors	7.1 – 7.3
Signals and Flags	8.1 – 8.3
Starting Signal Sequence	9.1 – 9.2
Courses	10.1 – 10.12
The Start	11.1 – 11.6
Finishing Line	12.1 – 12.2
Time Limit	13
Penalties	14.1
Retiring	15.1
Protests	16.1 – 16.4
Disclaimer & Disputes	17
Scoring	18.1 – 18.2
Prizes	19
Risk Statement	20

Appendix 1 - Condition of Entry (RSYC SSI 2016)

Appendix 2 - Racing Marks and Designations

RAYC OFFSHORE REGATTA YARMOUTH

SATURDAY 10th SEPTEMBER & SUNDAY 11th SEPTEMBER 2016

(all timings shown in these instructions are BST)

GENERAL

ORGANISING AUTHORITY

1. The organising authority for the RA Regatta is the Royal Solent Yacht Club (RSYC) who will provide the Race Committee and Race Officers for the Regatta.

RULES

- 2.1 The races will be governed by the Racing Rules of Sailing (RRS) of the International Sailing Federation 2013 – 2016 including International Sailing Federation (ISAF) approved amendments to date, the prescriptions of the Royal Yachting Association (RYA), the class rules of each class concerned, except as any of these are changed by these Sailing Instructions, and by these Sailing Instructions (SI). In addition, RSYC yachts racing in the RSYC cruiser class category, Folkboat, XOD and YOD are to race in accordance with the RSYC Standard Sailing Instructions. Each JSASTC yacht shall sail carrying the complete inventory of equipment issued by JSASTC to it on takeover.
- 2.2 RRS 35 (time limit) is changed by SI 13. RRS 60 (Protest) is changed by SI 16.4 , RRS 89.2 (amdt to SI) and Race Signals are changed by SI 8.1.

SAFETY & CONDITIONS OF ENTRY

- 3.1 The RAYC and RSYC accept no responsibility or liability for loss of life or injury to competitors or damage to any vessel. It is the sole and exclusive responsibility of each yacht to decide whether or not to start or continue a race.
- 3.2 All competitors must sign the RSYC Condition of Entry. This is attached at Appendix 1 and also contained within RSYC Standard Sailing Instructions 2016. Copies will be available at Race Office prior to the regatta.
- 3.3 Boats must be adequately insured, with cover of at least £2.0 million against third party claims.

CLASSES TO RACE

- 4.1 The following classes will be available:
 - (a) Bantry Cup. IRC Handicap races for fast cruiser/racers owned, borrowed or chartered by the RAYC or its members.
 - (b) Bhopal Cup. RAYC Handicap races for cruisers owned, borrowed or chartered by the RAYC or its members.
 - (c) RSYC Cruiser Class. RSYC members yachts with a RSYC approved handicap¹.
 - (d) Folkboats
 - (e) XOD
 - (f) YOD

¹ RSYC Cruisers may join the Bhopal Cup fleet at discretion of committee and Rear Commodore (Offshore) RAYC; this would be in the event that there are too few RSYC yachts to make their own start viable. However, they would be excluded from the RA race scores and placings for the award of RAYC trophies.

SCHEDULE OF RACES

5.1 Schedule of Races for RAYC and RSYC Cruiser Classes (See SI 9 for start sequence).

	Class and Race	Class Flag	Warning Signal	Starting Signal	Time Limit*
Sat 10 Sep 16	Bantry Cup Class Race 1	R	0950	1000	1200
	Bhopal Cup Class Race 1	NP 1	1000	1010	1210
	RSYC Cruiser Class	NP2	1010	1020	1400
	Subsequent races as determined by the Committee each with a time limit of two hours.**				
Sun 11 Sep	There will be a single race from the RSYC Committee Boat start line to Gilkicker Point for RAYC yachts heading back to the Eastern Solent. Each yacht is then to take their finish time as they cross the line at Gilkicker – see Para. 10.12				
	Bhopal Cup & Bantry Class	R	0950	1000	

* For interpretation of Time Limits see SI 13

** Note: If these starts follow the Folkboats, XODs or YODs, yachts should keep clear of keelboats in the starting area.

5.2 Schedule of Races for Folkboat, XOD and YOD classes.

	Class	Class Flag	Warning Signal	Starting Signal	Time Limit*
Sat 10 Sep 16	FOLKBOATS	F	1405	1410	1710
	XOD	W	1415	1420	1720
	YOD	NN2	1425	1430	1730
Sun 11 Sep	Folkboat	F	1015	1020	1220
	XOD	W	1025	1030	1230
	YOD	NN2	1035	1040	1240

* For interpretation of Time Limits see SI 13

SAILING INSTRUCTIONS FOR FOLKBOATS XOD AND YOD CLASSES

6.1 Races for Folkboats XOD and YOD classes shall be governed by the RSYC Standard Sailing Instructions 2016 copies of which can be obtained from the RSYC, except that the time limits for all classes shall be amended to those shown above.

SAILING INSTRUCTIONS FOR CRUISER CLASSES

NOTICES TO COMPETITORS

- 7.1 Notices to competitors will be posted in the RSYC foyer.
- 7.2 Changes to SI will be available from the RSYC and the main committee boat on request.
- 7.3 Changes to SI may be made orally via VHF radio Channel M1 (37A) from the committee boat (COUNTDOWN). It is the responsibility of competitors to keep a listening watch at all times on that frequency, failure to hear a signal broadcast to competitors on VHF Channel M shall not be grounds for protest or redress.

SIGNALS AND FLAGS

- 8.1 Signals afloat will be displayed from the main committee boat. RRS Race Signals "L" is changed in that Flag "Third Substitute" means "a change has been made to the SI". When the committee boat flies flag "Third Substitute" it is the responsibility of each competitor to obtain the change in SI from the committee boat either orally or by VHF radio. Such amendments will be designated by a number - **the first designated by the number 3**, the second by the number 4 and subsequent amendments by sequentially larger numbers. The numeral pennant for the number designating the latest amendment, as described above, will be flown inferior to Flag "Third Substitute". This changes RRS 89.2 (c).
- 8.2 The main committee boat will be identified as a vessel with a white banner, with "Royal Solent YC Committee" thereon. It may be a single hull blue vessel with a white wheelhouse: 'COUNTDOWN'.
- 8.3 Each boat shall strike her ensign before her preparatory signal and, whilst racing, wear on her backstay the class pennant indicating her class.

STARTING SIGNAL SEQUENCE

- 9.1 The starting signal sequence, amending RRS 26, will be as follows.

Signal	Flag	Sound Signal	Minutes before Starting Signal
Warning	Class flag	1 Sound	10
Preparatory	P, I, Z, Z with I, or black flag	1 Sound	5
One Minute	Preparatory flag lowered	1 Long Sound	1
Starting	Class flag lowered	1 Sound	0

- 9.2 In the event of a general recall or a postponement before the start or an abandonment soon after the start, RRS 26 will be reinstated (5-4-1-Go). Removal of a delay signal will be broadcast on the VHF channel M (37).

COURSES

- 10.1 The racing area is within the Western Solent and/or the Western Approaches to the Solent. A list of the Racing Marks that may be used is shown at Appendix 2.
- 10.2 Boats, in whatever direction they are racing, shall pass to the Southwards of:
 - (1) "Cross Boom" and all booms, beacons and posts in the Lymington River entrance. Boats may pass either side of "Jack in the Basket".
 - (2) The Royal Lymington Yacht Club starting platform.
- 10.3 Boats shall not pass through the barrier South of Durn's Point which is an obstruction to sea room.

- 10.4 Whilst racing, yachts in Cruiser Classes shall not pass inshore of any of the buoys forming the outer trot of RSYC moorings eastward of the Yarmouth harbour pier. This area ranks as an obstruction.
- 10.5 Courses will be displayed at or before the warning signal in a frame on the main committee boat. Letters or numbers on a red background indicate that such marks of the course shall be rounded to port and letters or numbers on a green background indicate that such marks shall be rounded to starboard. The numeric or alphabetical designations of marks used are shown in Appendix 2.
- 10.6 When two or three diamond shapes are displayed with the course signal, the course shall be sailed two or three times round respectively. Boats shall pass through the gate formed by the committee boat and a Distance Mark, from the direction of the previous mark, at the end of each round before commencing the next round.
- 10.7 If \square is displayed as part of the course signal, it indicates that boats shall pass through the gate described in 10.6 above from the direction of the previous mark.
- 10.8 If letter "S" is displayed over letter "H" by the committee boat, adjacent to a mark of the course, it denotes that boats shall pass that mark in the required manner and shall then proceed directly to cross the finishing line from the direction of that mark. The committee boat may make repeated sound signals to draw attention to the visual signal.
- 10.9 If Moveable Mark (Designation M) is laid as a mark of the course its approximate position will be indicated on a board displayed at the main committee boat either as an approximate magnetic bearing and distance (in NM) from the main committee boat or as an approximate latitude and longitude (degrees, minutes and decimal minutes format).
- 10.10 The starting and finishing lines will be formed in the vicinity of the start as described in SIs 11.1, 11.2 and 12.1 by the committee boat. The same outer limit mark will be used for both purposes.
- 10.11 Competitors should take care to avoid the Lymington – Yarmouth Ferry, they have extreme difficulty in strong winds and tides when approaching or leaving Yarmouth Harbour and yachts should give way early if there is any possible doubt.
- 10.12 RAYC Sweepstake – The course for the RAYC sweepstake is a straight "drag race" from the start line off Yarmouth, leaving Isle of Wight to Starboard to the imaginary finish line at Gilkicker Point.

THE START

- 11.1 Unless in the view of the Committee conditions dictate otherwise the main committee boat will establish the starting line in the vicinity of "**On the Rocks**" **Buoy** (Designation 8). In the event that the main committee boat establishes the starting line elsewhere the Committee may announce its location on VHF Channel M (37). In any event, competitors shall be responsible for ascertaining the location of the main committee boat and may contact call sign 'COUNTDOWN' on VHF Channel M (37) if in doubt.
- 11.2 The starting line will be an imaginary line drawn between an orange flag on the main committee boat and the course side of the starting/finishing line outer limit mark. If an inner limit mark is laid in the proximity of the main committee boat, boats shall not pass between it and the main committee boat at any time whilst racing. The inner limit mark will not necessarily lie on the starting line.
- 11.3 Boats shall cross the starting line in the direction of the first mark, leaving the starting line outer limit mark to port or starboard as appropriate.
- 11.4 Boats whose warning signal has not been made shall keep clear of the starting line.
- 11.5 The inner limit, if laid, and the outer limit mark will be orange inflatable buoys.
- 11.6 The main committee boat (COUNTDOWN) may announce the sail numbers or names or other appropriate identifying features of boats that are OCS at the start and subject to individual recall. However, a failure of the committee boat to announce the identity of a boat that was OCS at the start shall not be a breach of these SIs nor grounds for redress.

FINISHING LINE

- 12.1 The finishing line will be an imaginary line between the last mark of the course and a staff displaying an orange flag on the finishing Committee Boat. The Committee Boat will display a blue flag when on station at the finishing line. Boats shall cross the finishing line from the direction of the preceding mark.
- 12.2 Finish line for the RAYC Sweepstake will be an imaginary line running 120 degrees mag from Fort GILKICKER (Tower). Yachts are to take their own times and declare their actual time taken to complete the race. Times should be submitted by email or telephone to the Rear Commodore (Offshore) who will correct them based upon ratings and publish results by email.

TIME LIMITS

13. RRS 35 is varied in that:
 - (a) If one boat sails the course as required in RRS 28.1 and finishes within the time limit, boats that do not finish within the time limit or within 30 minutes of the first boat, whichever is the later, will be scored 'Did Not Finish'.
 - (b) For a race of more than one round; if one boat sails the course as required in RRS 28.1, completing one or more rounds of the course but failing to finish within the time limit, the result will be determined by the placings at the end of the last completed round.
 - (c) When the first boat in her race fails to complete the course by the time limit and SI 13(b) cannot be applied but '□' is a mark of the course, the results of the race may at the discretion of the Committee be determined by the ultimate placings of boats through the gate.
 - (d) Notwithstanding the above, when the first boat in a race fails to finish within the time limit or complete one round of the course or pass through the starting/finishing line in a race in which □ is a mark of the course, the race will usually be abandoned. However in exceptional circumstances in which the Committee believes that the proximity of the leading boat to the starting/finishing line is such that a small time extension would secure a result (whether or not such a result would require it to shorten course at this point), it may extend the time limit by hoisting Flag 'E' superior to the class flag of the class concerned and making 2 sound signals as the leading boat approaches the starting/finishing line. The time extension will cease as the first boat finishes and the flag signal will be dipped and re-hoisted. All remaining boats in class will then have a further 50 minutes in which to finish. The extension signal will be lowered when either all boats in class have finished or retired or 50 minutes has elapsed since the first boat finished, whichever is the earlier.

PENALTIES

- 14.1 RRS 44.1 and 44.2 (720 turns) will apply to boats that have broken a rule of Part 2 of RRS whilst racing.

RETIRING

- 15.1 Boats intending to retire from a race shall notify the Race Committee at the earliest opportunity. The Committee may be contacted by hailing or calling COUNTDOWN on VHF Channel M (37). If neither option is feasible, a message may be left with the RSYC on telephone 01983 760256.

PROTESTS

- 16.1 A protesting boat shall notify the Race Committee, aboard the main Committee Boat where possible, of her intention to protest as soon as possible after finishing or as soon as possible after retiring from a race and advise the number(s) of the protested boat(s) and receive acknowledgment. RRS 61.1 (a) still applies.
- 16.2 Protests shall be written on RYA style protest forms available from the RSYC and the completed protest form shall be transmitted to the RSYC within 2 hours of the protesting boat's finishing time of the last race of the day.
- 16.3 The time and place of protest hearings will be posted on the Notice board in the hall of the RSYC. It is responsibility of the protestors and protestees to acquaint themselves with this information and to present themselves at the appropriate time with any witnesses they may wish to call. In the event of either party failing to be present at a hearing the protest may be heard in their absence.
- 16.4 The Race Committee and the Protest Committee may open a hearing or initiate a protest when they are advised by any means of damage caused in an incident even if notification is by way of an invalid protest. This changes RRS 60.

DISCLAIMER AND DISPUTES

17. Competitors attention is drawn to SI 3.1 and RRS 4.

SCORING

- 18.1 The Scoring System will be the low point scoring system in Appendix A of RRS. There will be no discards. A minimum of one race will constitute the series.
- 18.2 When there is a tie in series points between two or more boats, the tie will be broken in accordance with Appendix A of the RRS.

PRIZES

19. The following prizes will be available:
 - (a) **Admiral's Cup.** Awarded to the first placed yacht crewed by RA units or Establishments.
 - (b) **Bantry Cup.** Awarded to the winner of the RAYC IRC Handicap Race (or series).
 - (c) **Bhopal Cup.** Awarded to the winner of the RAYC Cruiser Handicap Race (or series).
 - (d) **Golden Jubilee Trophy.** Awarded, at the discretion of the committee, to a yacht competing within Bantry or Bhopal fleet for special endeavours or similar.
 - (e) **Morgan Trophy.** Awarded to the second placed yacht in the RAYC Cruiser Handicap Race (or series) on Sat 10th Sep 2016.
 - (f) **Nawabzada Cup.** Awarded to the second placed yacht in the RAYC IRC Handicap race (or series) on Sat 10th Sep 2016.
 - (g) **Sweepstake.** 90% of total sweepstake entry fees² for each class will be awarded to (or split between) the winning yacht within each class and, if more than four boats start, the second placed yacht. If less than 3 boats start there will be no race and the sweepstake money will be refunded to individuals as appropriate.

2. Entry fees for the sweepstake are £10.00 per yacht and will be collected by Rear Commodore (Offshore), cash or cheque (payable to RAYC), on Sat 12 or Sun 13 Sep in Yarmouth.

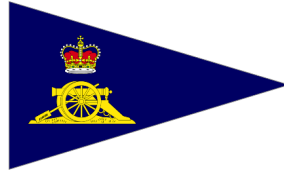
20. RISK STATEMENT.

20.1 Rule 4 of the RRS states: "The responsibility for a boat's decision to participate in a race or to continue to race is hers alone." Sailing is by its nature an unpredictable sport and therefore inherently involves an element of risk. By taking part in the event, each competitor agrees and acknowledges that:

- (a) They are aware of the inherent element of risk involved in the sport and accept responsibility for the exposure of themselves, their crew and their boat to such inherent risk whilst taking part in the event;
- (b) They are responsible for the safety of themselves, their crew, their boat and their other property whether afloat or ashore;
- (c) They accept responsibility for any injury, damage or loss to the extent caused by their own actions or omissions;
- (d) Their boat is in good order, equipped to sail in the event and they are fit to participate;
- (e) The provision of a race management team, patrol boats and other officials and volunteers by the race organiser does not relieve them of their own responsibilities;
- (f) The provision of patrol boat cover is limited to such assistance, particularly in extreme weather conditions, as can be practically provided in the circumstances;
- (g) For offshore races, they are responsible for ensuring that their boat is equipped and seaworthy so as to be able to face extremes of weather; that there is a crew sufficient in number, experience and fitness to withstand such weather; and that the safety equipment is properly maintained, stowed and in date and is familiar to the crew.

THE RAYC OFFSHORE REGATTA

THE ROYAL SOLENT YACHT CLUB



SATURDAY 10TH & SUNDAY 11TH SEPTEMBER

I/Wewish to enter my/our boat for races organised by the Royal Solent Yacht Club. I/We agree to be bound by the Rules as defined in the Racing Rules of Sailing.

I/We undertake to sail in compliance with the RYA Racing Charter.

I/We certify that the particulars of my/our boat, as stated on this form, are correct.

I/We accept that neither the Royal Solent Yacht Club nor its representatives shall bear any responsibility for any loss, damage, death or personal injury howsoever caused to any boat, skipper or crew.

I/We confirm that I/we hold third party indemnity insurance with a minimum cover of £2,000,000.

I/We warrant the suitability of the boat for races and accept full responsibility for the sea-worthiness and safe navigation of the boat, the competence of the crew and pursuant to Fundamental Rule 4 for deciding whether to start, continue or retire from any race. I/We accept that any inspection of the boat does not in any way limit my/our absolute responsibility in these respects.

I/We undertake to draw these matters to the attention of all members of the crew before the start of each and every race.

DETAILS OF BOAT:

Name of boat Sail No Class

Handicap: IRC NHC PY/Other

Colour of Hull.....Colour of Spinnaker.....

Owner(s)

Address.....
..... Post Code

Telephone Home Work

Mobile

Email.....

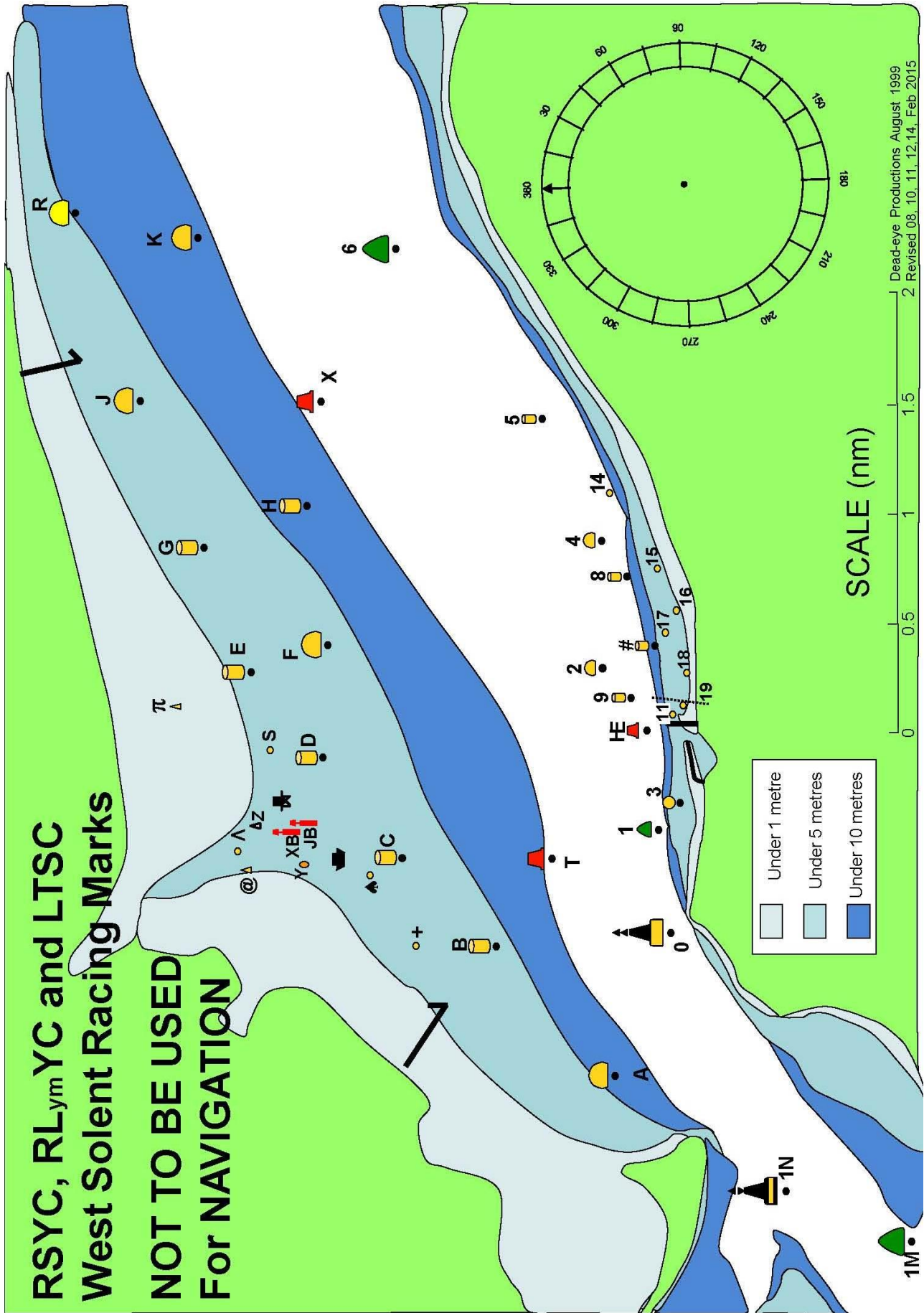
Yacht Club (if not a member of the Royal Solent Yacht Club).....

Signed Date.....

Owner / Person in charge (please delete as appropriate)

APPENDIX 2: SOLENT RACING MARKS - DESIGNATIONS 2015

RACING MARKS 2015					
	Name	Sponsor	N Lat	W Long	
1E(W)	Christchurch Ledge		50.41.60	01.41.50	Yellow Sphere
1G(W)	SW Shingles		50.39.29	01.37.52	Red Pillar
1H(W)	Bridge		50.39.63	01.36.88	YBY Pillar
1J(W)	Shingles Elbow		50.40.36	01.36.05	Red Can
1K(W)	North Head		50.42.68	01.35.51	Green Can
1N	NE Shingles		50.41.96	01.33.40	East Cardinal
1M	Warden		50.41.48	01.33.55	Green Can
A	Hurst	Echopilot	50.42.79	01.32.53	Yellow Sphere
B	Pennington	Dunford	50.43.38	01.31.54	Yellow Cylinder
C	Oxey	Colten	50.43.83	01.30.86	Yellow Cylinder
D	Royal Lymington	Yacht Haven	50.44.17	01.30.10	Yellow Cylinder
E	Pylewell	Folkboats UK	50.44.58	01.29.43	Yellow Cylinder
F	Berthon	Berthon	50.44.20	01.29.22	Yellow Sphere
G	Tanners	Bridgefords	50.44.79	01.28.47	Yellow Cylinder
H	Jackson	Paul Jackson	50.44.30	01.28.16	Yellow Cylinder
J	Sowley	Zwerver	50.45.11	01.27.33	Yellow Sphere
K	Quod Possumus!	Quod Possumus!	50.44.83	01.26.09	Yellow Sphere
R	Durns	Durns	50.45.43	01.25.89	Yellow Sphere
T	Lymington Bank		50.43.10	01.30.85	Red Can
X	Solent Bank		50.44.23	01.27.37	Red Can
0	Sconce		50.42.52	01.31.43	North Cardinal
1	Black Rock		50.42.53	01.30.43	Green Cone
2	George Hotel	The George Hotel	50.42.86	01.29.40	Yellow Sphere
3	Folkboats Forever	Yarmouth Folkboats	50.42.47	01.30.43	Yellow Sphere
4	The English Summer Berry Co	The English Summer Berry Co	50.42.86	01.28.42	Yellow Sphere
5	Caldwells	Caldwells Estate Agents	50.43.15	01.27.49	Yellow Cylinder
6	Hamstead Ledge		50.43.86	01.26.18	Green Conical
8	Bouldnor	Harwoods	50.42.73	01.28.69	Yellow Cylinder
9	Royal Solent YC ODM	Charles Stanley	50.42.72	01.29.70	Yellow Cylinder
HE	East Fairway Buoy		50.42.64	01.29.88	Red Can
#	Towers		50.42.63	01.29.26	Yellow Pillar
3A(E)	West Lepe		50.45.23	01.24.09	Red Can
3C(E)	Cratinsure.com		50.45.64	01.23.12	Yellow Sphere
3D(E)	Saltmead		50.44.52	01.23.04	Green Conical
3G(E)	SevenStar Yacht Trans		50.46.58	01.21.46	Yellow Sphere
3H(E)	East Lepe		50.45.93	01.21.07	Red Can
3L(E)	Gurnard Ledge		50.45.51	01.20.59	Green Conical
3N(E)	Quinnell		50.47.07	01.19.88	Yellow Sphere
33(E)	Prince Consort		50.46.42	01.17.55	North Cardinal
LYMINGTON SHORE					
+	Plus Mark	BHG	50.43.78	01.31.53	Yellow Sphere
⚓	West Mark	Scott Bailey	50.43.99	01.30.99	Yellow Sphere
⚓	Baverstock	Lymington Town SC	50.44.17	01.30.86	⚓
JB	Jack in the Basket		50.44.28	01.30.57	Red Post
XB	Cross Boom		50.44.36	01.30.58	Red Post
Y	Black & Orange		50.44.31	01.30.81	Black/Orange Sphere
@	West Reach	Jeremy Rogers Yacht	50.44.59	01.30.92	Yellow Cone
Λ	East Reach		50.44.63	01.30.80	Yellow Cylinder
Z	Black & White	Ropewalk Marine	50.44.51	01.30.56	Black/White Cone
⚓	RLYC Platform	Royal Lymington YC	50.44.42	01.30.42	⚓
S	East Mark	Sanders Sails	50.44.51	01.30.00	Yellow Sphere
π	Pylewell Inner		50.44.92	01.29.70	Yellow Cone
YARMOUTH SHORE					
11	Delphie	Delphie Lakeman Trust	50.42.48	01.29.94	Yellow Sphere
14	Stone pier	XOD Yarmouth	50.42.82	01.28.05	Yellow Sphere
15	Hallmark		50.42.63	01.28.70	Yellow Sphere
16	St Swithins		50.42.52	01.28.99	Yellow Sphere
17	Camel		50.42.57	01.29.17	Yellow Sphere
18	Mount		50.42.44	01.29.43	Yellow Sphere
19	Dinghy ODM		50.42.44	01.29.82	Yellow Sphere
MARKS NOT CHARTED					
M	Moveable mark				Orange Inflatable
N	Moveable windward mark				Orange Inflatable
□	Gate - start/finish line when used to mark the end of a round and not the finish				
(E) – off chart to the East, (W) – off chart to the West					



MARKS OFF THE CLUB CHART

	No	Name	type	N. Lat	N. Long
WEST					
	1E	Christchurch Ledge	Yellow Sphere	50 41.56	01 41.50
	1G	SW Shingles	Red Pillar	50 39.35	01 37.45
	1H	Bridge	YBY Pillar	50 39.63	01 36.88
	1J	Shingles Elbow	Red Can	50 40.36	01 36.05
	1K	North Head	Green Can	50 42.68	01 35.51
EAST					
	3A	West Lepe	Red Can	50 45.23	01 29.26
	3C	cratfinsure.com	yellow	50 45.64	01 23.12
	3D	Saltmead	Green Can	50 44.52	01 23.04
	3G	Sevenstar Yacht Trans	yellow	50 46.58	01 21.46
	3H	East Lepe	Red Can	50 45.93	01 21.07
	3L	Gurnard Ledge	Green Can	50 45.51	01 20.59
	3N	Quinnel	Yellow	50 47.07	01 19.88
	33	Prince Consort	North Cardinal	50 46.41	01 17.56