

**The 54th  
FOLKBOAT WEEK**

**Saturday 24th August to Saturday 31st August 2019**

**SAILING INSTRUCTIONS**



**ORGANISED BY THE ROYAL SOLENT YACHT CLUB,  
YARMOUTH, ISLE OF WIGHT.**

**ROYAL SOLENT YACHT CLUB**

**Telephone 01983 760256**

**Fax 01983 761172**

**Email: [sailing@royalsolent.org](mailto:sailing@royalsolent.org)**

Commodore	Anne Kyle
Vice Commodore	Martyn Collinson
Rear Commodores	Katie Davies (Sailing) Miles Peckham ( House)
Hon Treasurer	James Day
Chief Race Officer	Jeremy Willcock
Secretary	Claire Hallett
Sailing Secretary	Jeremy Willcock

The Commodore and Committee welcome you to Yarmouth and wish you an exciting and enjoyable Folkboat Week.

## **FOLKBOAT ASSOCIATION**

President	Mrs Sally Kallis
Chairman	Mr David A Fox
Technical Chairman	Mr David Gredley
Secretary/Treasurer	Mrs Nicky Henderson

## **SOUTH COAST AREA COMMITTEE**

Chairman	Mr David A Fox
Secretary	Mrs Teresa Fox
Treasurer	Mr Martin Le Gassicke
Cruising Representative	Mr Philip Jenkins
Racing Representative	Mr Stuart Watson
Press Representative	Mr Steven Moore

**FOLKBOAT WEEK**  
**Saturday 18th August - Saturday 25th August 2018**

**SAILING INSTRUCTIONS**

Abbreviations:

RRS: Racing Rules of Sailing

NFIA: Nordic Folkboat International Association Rules

UKRR: U.K Class Rules and Regulations.

RSYC: Royal Solent Yacht Club.

R.LymYC: Royal Lymington Yacht Club.

TCF: Time Correction Factor.

SI: Sailing Instructions.

**1 ORGANISING AUTHORITY.**

1.1 The Organising Authority is the Royal Solent Yacht Club.

**2 THE RULES**

2.1 The Event will be governed by the Rules as defined in the Racing Rules of Sailing 2017-2020, the Notice of Race and these Sailing Instructions.

2.2 The Following RRS are changed:

2.2.1 The Protest Committee may decide the penalty for breaches of any Rule, other than a rule of RRS Parts 1 and 2. This modifies RRS 64.1(a).

2.2.2 RRS 35 (time limits) are changed by S.I.11

2.2.3 RRS 28.1 is modified by the addition of :-

The race committee may disqualify (DSQ) without a hearing a boat that has broken this rule but only when two members of the race committee have seen the incident. The boat so disqualified will be informed by notification in the race results and may in addition be informed by VHF Radio.

2.2.4 RRS regarding **penalties** is changed:

- **The Two Turn Penalty** is modified to a One Turn Penalty, only one turn, including one tack and one gybe in the same direction, is required. This changes RRS 44.1 & 2.
- **Exoneration Penalty:** A boat that may have broken a rule of RRS Part 2, or RRS 31 may, after finishing the race concerned and before the start of a related protest hearing, notify the Race Committee that she accepts a 20% scoring penalty as stated in RRS 44.3(c), (except that the minimum penalty is two places if that does not result in a score worse than DNF). This penalty does not reverse an OCS score, a disqualification under RRS 30.3 or a penalty under RRS Appendix P

2.2.5 RRS 63.7 is changed: In the Event of conflict between the Notice of Race and the Sailing instructions, the Sailing Instructions shall prevail.

2.2.6 Scoring will be in accordance with RRS low points system and RRS Appendix A9 as changed by SI 13.

**3. CLASS RULES**

3.1 The Nordic Folkboat International Association Rules and UK Class Rules and Regulations

shall apply, except that there shall be no penalty for a breach of NFIA Class Rule 13.10 (Crew Limitation) or of NFIA Class Rule 8.20 (headsail furling) and Folkboats are permitted to use spinnakers as per UK Class Regulation Part 11 1.4.

- 3.2 All helmsmen must be Full or Associate Members of the UK Class Association and shall have paid their subscriptions for 2019.
- 3.3 Breaches of UKRR 3.2 (eligibility) may be waived at the discretion of the Race Committee.

## **4 NOTICES TO COMPETITORS AND CHANGES IN SAILING INSTRUCTIONS**

- 4.1 Notices to competitors will be posted on the official Folkboat Week Notice Board located in the RSYC.
- 4.2 Any change to the Sailing Instructions will be posted at least two hours before the advertised start of the race(s) concerned.
- 4.3 Flag “Third Substitute” when flown afloat means “an amendment to sailing instructions or notice to competitors has been published” and the sequential number of the amendment will be flown inferior to flag “Third Substitute”.

## **5 SIGNALS MADE ASHORE**

- 5.1 All signals made ashore will be displayed inferior to Flag F from The Royal Solent Yacht Club flagstaff.
- 5.2 When flag A.P. is displayed ashore “1 minute” is replaced with “not less than 60 minutes” in the race signal A.P.
- 5.

## **6 SCHEDULE OF RACES AND CLASS FLAGS**

- 6.1 The programme of racing will be in accordance with the schedule in Appendix 1 of the Sailing Instructions but may be amended by the race committee.
- 6.2 The Open Division class and warning flag will be flag “F”. The Classic Division class and warning flag will be flag “A”.
- 6.3 All boats shall fly their class flag on their backstay.
- 6.4 All boats shall fly the sponsor’s flag “Lymington Yacht Haven ” from their backstay.
- 6.5 There will be no race unless a minimum of 2 boats start in a race

## **7 RACE AREA**

- 7.1 The race area will be the Solent and Christchurch Bay .

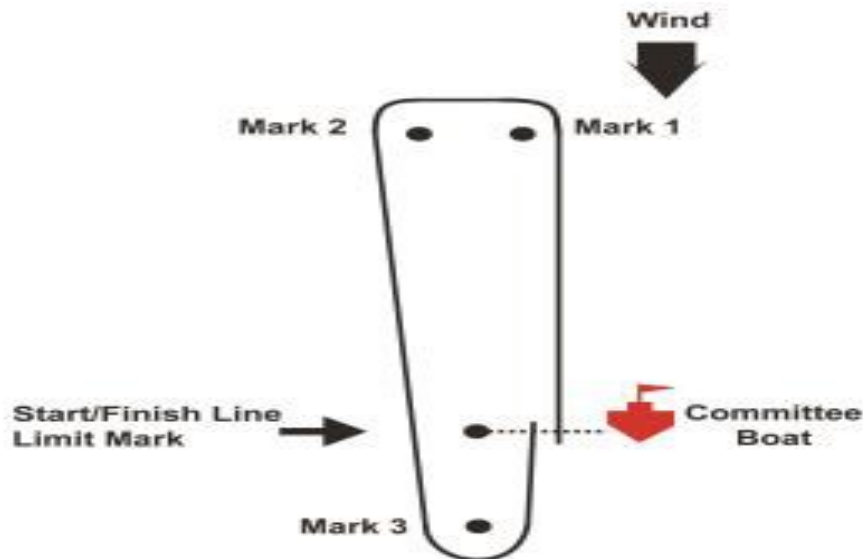
## **8 COURSES/OBSTRUCTION**

- 8.1 Boats, when racing shall pass to the south of all booms, beacons and posts in the Lymington River entrance, including the Royal Lymington YC starting platform and inner distance mark and the barrier and beacon off Durns Point.
- 8.2 Boats shall pass to the north of a white spherical buoy approximately one metre diameter situated south east of the Inner trot of harbour moorings to the west of Yarmouth Harbour entrance.
- 8.3 Each mark (navigation buoy or special racing mark) has been allocated a symbol (letter or number) as shown in Appendix 2.
- 8.4 The course to be sailed will be indicated by the symbols displayed on boards on one side of the

Committee Boat. The symbols will be displayed in the order in which the marks shall be rounded or passed. Marks indicated by symbols on a green background shall be rounded or passed to starboard. Marks indicated by symbols shown on a red background shall be rounded or passed to port. The course for Christchurch Ledge Race and Long Solent Race will be broadcast on VHF Radio Channel 37 (M 1). For Windward Leeward Races refer to SI 8.10

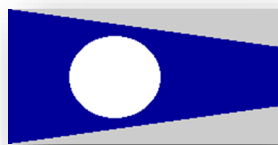
- 8.5 Other Courses may be announced on VHF Channel 37 (M1)
- 8.6 All marks shall be rounding marks unless the alteration of course is less than 90 degrees when they shall be passing marks.
- 8.7 When two or three white diamond shapes are displayed with the course signal the course shall be sailed two or three times round respectively. Boats shall pass through the gate formed by the Committee Boat and a Distance Mark from the direction of the previous mark at the end of each round before commencing the next round.
- 8.8 When '□' is displayed as part of the course signal, it indicates that boats shall pass through the gate described in 8.7 above from the direction of the previous mark.
- 8.9 When one or more movable marks (symbol M or N) is in the course, its approximate magnetic bearing from the Committee Boat may be displayed at the warning signal. Bearings will be in three figure degree notation. If both movable marks are in the course, two bearings may be displayed in the order in which the marks are to be rounded or passed.
- 8.10 For Windward Leeward Events the courses will be as either Course A or Course B. Either a red or a green flag will be flown from the Committee Boat. The diagram below is based on the red course (port rounding). For the green course (starboard rounding) the diagram would be reversed.

## Course A



### For the Red Course

Mark 1 to port  
Mark 2 to port  
Mark 3 to port  
Finish/Start Line



### For the Green Course

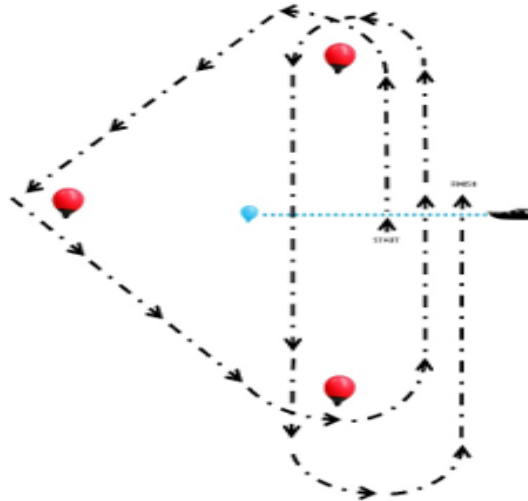
Mark 2 to starboard  
Mark 1 to starboard  
Mark 3 to starboard  
Finish/Start Line

**Please note that boats shall pass through the finish line at the end of each round i.e after the Leeward mark.**

Boats shall **NOT** pass through the line on the downwind leg.

The number of rounds will be indicated on the Committee Boat course board by diamond symbols.

## Course B



Pennant 3

## 9 THE START

- 9.1 The Committee Boat will be identified by a Royal Solent Yacht Club burgee at the masthead and a white banner with ROYAL SOLENT YC COMMITTEE thereon.
- 9.2 Boats are requested to identify themselves by displaying their sail numbers before the start of each race by passing close to the Committee Boat on the opposite side to the starting line. Boats not so identified may not be finished.
- 9.3 Races will be started using RRS 26 with the warning signal five minutes before the start.
- 9.4 The starting line will be between a staff displaying an orange flag on the Committee Boat and the course side of the outer distance mark..
- 9.5 The Classic Division will start 10 minutes before the Open Division, except races 5 &6 &7 when the start will be 5 minutes after the Open Division.
- 9.6 Information with regard to OCS boats may be transmitted on VHF Radio channel 37.

## 10 THE FINISH

- 10.1 The finishing line will be between the staff displaying an orange flag on the Committee Boat and an orange inflatable buoy. EXCEPT that on the last or only race of the day the finishing Committee Boat identified by flying a blue flag may relocate to the fixed moorings off the Royal Solent Yacht Club. The finish will then be between the finishing



Committee Boat and the Royal Solent Yacht Club outer distance mark. (not Windward Leeward races).

10.2 Boats shall keep well clear of the finishing line after finishing

## **11 TIME LIMIT**

11.1 The time limit will be as laid out in Appendix 1. Boats failing to finish within 30 minutes of the first boat in her class to finish or within the published time limit, whichever is the later, will be scored Did Not Finish. (Not Winward/leeward races 5,6,7.)

This changes rule RRS 35.

11.2 When the first boat in her race fails to complete the course by the time limit, the results of the race will be determined by the placings of the boats through the start/finish line when '□' is a mark of the course

## **12 PROTESTS**

12.1 A protesting boat shall notify the Race Committee aboard the Committee Boat of her intention to protest immediately after finishing or as soon as possible after retiring from a race and advise the number(s) of the protested boat(s) and receive acknowledgement.

12.2 Protests shall be written on forms available from The Royal Solent Yacht Club Race Office and not withstanding RRS 61.3 be lodged there within one and a half hours of the protesting boat finishing the last race of the day or the Race Committee signalling "No more racing today" whichever is the later.

12.3 The time and place of protest hearings will be posted on the Notice Board in the hall of the Royal Solent Yacht Club.

12.4 RYA Rules Dispute Advisory and Mediation Hearings are available

## **13 SCORING**

13.1 The Open Division including both Nordic and non Nordic boats will be scored as one class. The Classic Division will be scored separately.

13.2 The minimum number of races to constitute a series is 2

13.3 Scoring will be in accordance with RRS Low Points system and Appendix A9 as amended below:

13.3.1 If 5 or more races are completed a boat's worst score will be discarded (unless RRS 90.3(b) applies).

13.3.2 The score for a boat that does not come to the starting area (DNC) shall be scored points for the finishing place two more than the number of boats that came to the starting area. This changes RRS A4.2 and RRS Appendix A9.

## **14 RISK STATEMENT**

14.1 Rule 4 of the RRS states: "The responsibility for a boat's decision to participate in a race or to continue to race is hers alone." Sailing is by its nature an unpredictable sport and therefore inherently involves an element of risk. By taking part in the event, each competitor agrees and acknowledges that:

- a) They are aware of the inherent element of risk involved in the sport and accept responsibility for the exposure of themselves, their crew and their boat to such inherent risk. whilst taking part in the event;



- b) They are responsible for the safety of themselves, their crew, their boat and their other property whether afloat or ashore;
- c) They accept responsibility for any injury, damage or loss to the extent caused by their own actions or omissions;
- d) Their boat is in good order, equipped to sail in the event and they are fit to participate;
- e) The provision of a race management team, patrol boats and other officials and volunteers by RSYC does not relieve them of their own responsibilities;
- f) The provision of patrol boat cover is limited to such assistance, particularly in extreme weather conditions, as can be practically provided in the circumstances;
- g) It is their responsibility to familiarise themselves with any risks specific to the venue or event drawn to their attention in any rules and information produced for the venue or event and to attend any safety briefing held for the event.
- h) For offshore races, they are responsible for ensuring that their boat is equipped and sea-worthy so as to be able to face extremes of weather; that there is a crew sufficient in number, experience and fitness to withstand such weather; and that the safety equipment is properly maintained, stowed and in date and is familiar to the crew.

## **15 INSPECTIONS**

- 15.1 The fact that race officials may conduct inspections of a boat does not reduce the responsibilities of each competitor set out in the Notice of Race and these Sailing Instructions.

## **16 INSURANCE**

- 16.1 All boats shall have for the duration of Folkboat Week adequate insurance cover and in particular shall have insurance against third party claims in the sum of at least £3,000,000 (three million pounds sterling) or the equivalent.

## **17 SAFETY & VHF COMMUNICATIONS**

- 17.1 A boat is entirely responsible for its own safety, whether afloat or ashore, and nothing, whether in the Notice of Race or these Sailing Instructions or anywhere else, reduces this responsibility.
- 17.2. A boat which retires from a race shall make every effort to ensure that the race committee is notified as soon as possible and before returning to her berth. Failure to comply may result in disqualification. (VHF Radio Channel 37, M1)
- 17.3 All boats shall comply with Notice of Race 11 (Safety Regulations).

## **18 PRIZES**

- 18.1 Prizes will be awarded as stated in the Notice of Race.

## Appendix 1 FOLKBOAT WEEK 2019 - RACES

EVENT	DAY	HW Ports- mouth BST	RACES	START TIME	TIME LIMIT
<b>1/2</b>	Sunday 25th	06.50 3.8m	<b>Briefing at RSYC</b> <b>Trophy Races</b> ~ Two races CD & OD Back to Back Race 1 Pts1/2: CD ~ Scanyacht Rose Bowl Pts1/2: OD ~ Scanyacht Nordic Plaque	9.00 Not before 10:30	2.5 hours after valid start time per race
<b>3</b>	Monday 26th	08.15 3.8m	<b>Christchurch Ledge Race</b> Pts 3: CD ~ Jack Riddle Trophy Pts 3: OD ~ Alan Davis Salver	Not before 10.00	6 hours after valid start time
<b>4</b>	Tuesday 27th	09.40 4.1m  22.01 4.3m	<b>AM: Trophy Race</b> Pts 4: CD ~ Tomic Trophy Pts 4: OD ~ Wyvern Batt Trophy  <b>PM: Crew Races X2.</b>	Not before 10:00  Immediately after Trophy Race	2.5 hours after valid start time  2hrs after Valid Start Time
	Wednesday 28th	10.36 4.4	Reserve Day		
<b>5/6/7 OD</b> <b>5/6 7 CD</b>	Thursday 29th	11.21 4.6m	<b>Windward-Leewards</b>  OD 3 Races Back to Back <b>CD 3 Races Back to Back</b>	Not before 10:00	2 Hours after the valid start time per race or 30 mins after 1st finisher
<b>8 OD</b> <b>8 CD</b>	Friday 30th	12.05 4.8m	<b>Long Solent Race</b> <b>Pts 8: CD ~ Colin Grey Trophy</b> Pts 8: OD ~ Lymington Yacht Haven Trophy <b>Classic Division Start not before 10:20</b> <b>Open Division Start not before 10:30</b>	Not before <b>10.00</b>	6 hours after valid start time
<b>9 OD</b> <b>9 CD</b>	Saturday 31st	12.49 5.m	<b>The Bernard Turner Points Race</b> Points Race Pts 9: CD Pts9: OD	Not before 10:0	3 hours after valid start time

**Notes:** Classic Division boats start **TEN MINUTES before** the Open Division, except for races **5, 6 & 7** which will be **FIVE MINUTES AFTER** the Open Division.

Abbreviations:- **CD** ~ Classic Division **OD** ~ Open Division

All starts from Committee Boat in Bouldnor Bay area unless otherwise advised.

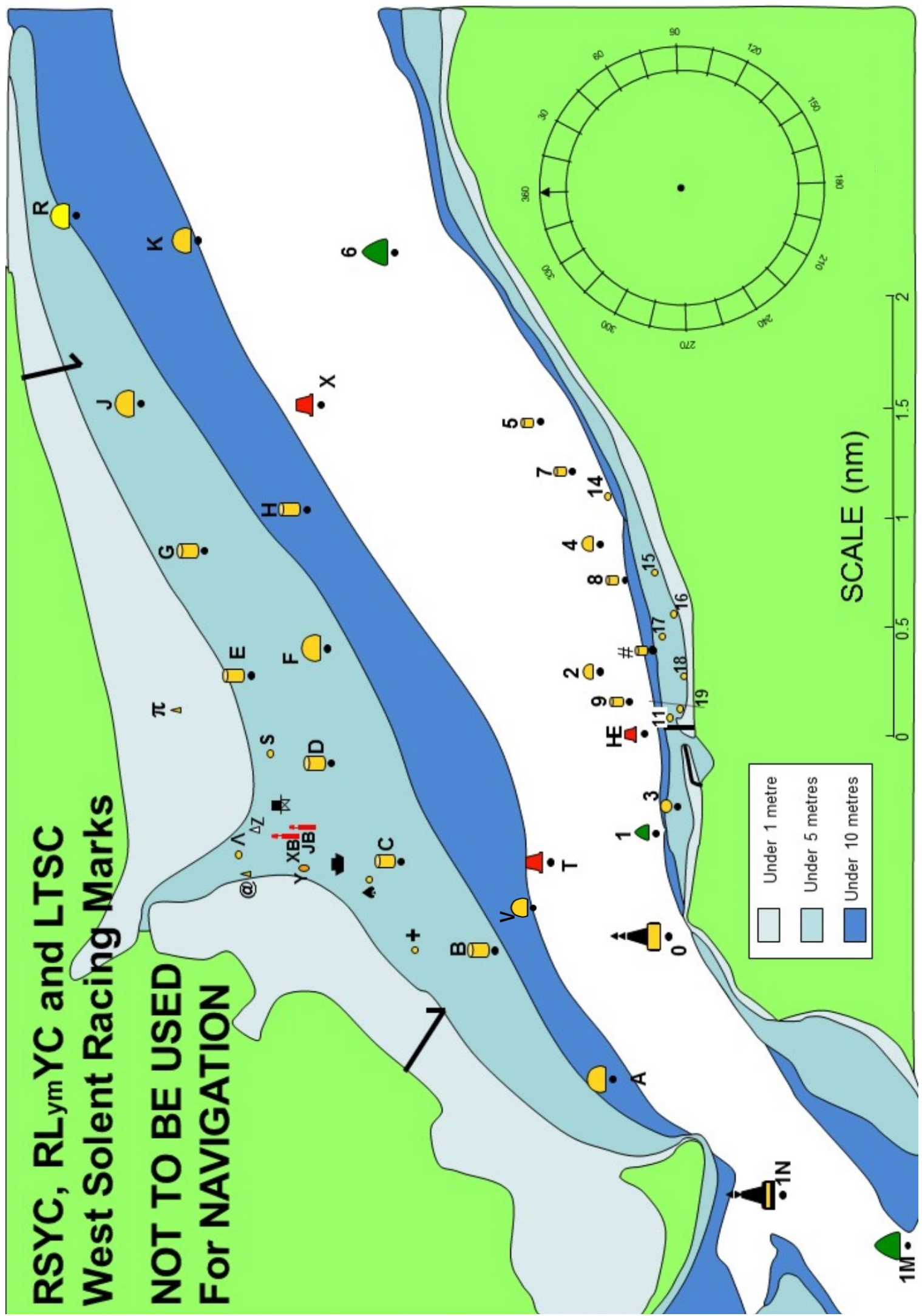
**The Race Committee reserves the right to change the schedule of races.**

## FOLKBOAT WEEK 2019 - SOCIAL EVENTS

DAY	TIME	SOCIAL EVENTS	
Saturday 24th August	19:00 for 19:30	Welcome Drinks & Buffet Supper at RSYC  Supported by Lymington Yacht Haven	£18.75
Sunday 25th August	<b>09:00</b>  19:00 for 19.30	<b>Briefing at RSYC</b>  Prize Giving & BBQa at RSYC	£17.50
Monday 26th August	19:30	Prize Giving, & Dinner at RSYC  Supported by Lymington Yacht Haven	£15.00
Tuesday 27th August	18.00	Prize Giving and Royal Solent Garden Party  Supported by Lymington Yacht Haven	£5.00
Wednesday 28th August	18.30  19.00 for 19.30	Drinks and Supper at Off the Rails Supported by Lymington Yacht Haven	£20.00
Thursday 29th August	18:00  From 19:30	Southern Area AGM at RSYC  Prize Giving, Quiz & Curry Night at RSYC	£16.95
Friday 30th August	18:00  From 19:30	Folkboat Happy Hour & Royal Naval Tot Club of Antigua & Barbuda  Prize Giving at RSYC Fish and Chip Supper at RSYC	£9.95
Saturday 31st August	19:00 for 19:30	<b>End of Regatta Drinks, Dinner &amp; Prize giving at RSYC</b>  Supported by Lymington Yacht Haven  Bar Open until 23:45	£26.00

# RSYC, RL<sub>ym</sub>YC and LTSC West Solent Racing Marks

**NOT TO BE USED  
For NAVIGATION**





<b>RACING MARKS 2019</b>					
	<b>Name</b>	<b>Sponsor</b>	<b>N Lat</b>	<b>W Long</b>	
1E(W)	Christchurch Ledge		50.41.60	01.41.50	Yellow Sphere
1G(W)	SW Shingles		50.39.29	01.37.52	Red Pillar
1H(W)	Bridge		50.39.63	01.36.88	YBY Pillar
1J(W)	Shingles Elbow		50.40.36	01.36.05	Red Can
1K(W)	North Head		50.42.68	01.35.51	Green Can
1N	NE Shingles		50.41.96	01.33.40	East Cardinal
1M	Warden		50.41.48	01.33.55	Green Can
A	Hurst	Chewton Glen	50.42.79	01.32.53	Yellow Sphere
B	Pennington	Dunford	50.43.38	01.31.54	Yellow Cylinder
C	Oxey	Colten	50.43.83	01.30.86	Yellow Cylinder
D	Royal Lymington	Yacht Haven	50.44.17	01.30.10	Yellow Cylinder
E	Pylewell	Folkboats UK	50.44.58	01.29.43	Yellow Cylinder
F	Berthon	Berthon	50.44.20	01.29.22	Yellow Sphere
G	Tanners	Bridgefords	50.44.79	01.28.47	Yellow Cylinder
H	Jackson	Paul Jackson	50.44.30	01.28.16	Yellow Cylinder
J	Sowley	Zwerver	50.45.11	01.27.33	Yellow Sphere
K	Quod Possumus!	Quod Possumus!	50.44.83	01.26.09	Yellow Sphere
R	Durns	Durns	50.45.43	01.25.89	Yellow Sphere
T	Lymington Bank		50.43.10	01.30.85	Red Can
V	Victor		50.43.30	01.31.30	
X	Solent Bank		50.44.23	01.27.37	Red Can
0	Sconce		50.42.52	01.31.43	North Cardinal
1	Black Rock		50.42.53	01.30.43	Green Cone
2	Charles Stanley	Charles Stanley	50.42.86	01.29.40	Yellow Sphere
3	Folkboats Forever	Yarmouth Folkboats	50.42.47	01.30.43	Yellow Sphere
4	<b>The English Summer Berry Co</b>	The English Summer Berry Co	50.42.86	01.28.42	Yellow Sphere
5	Caldwells	Caldwells Estate Agents	50.43.15	01.27.49	Yellow Cylinder
6	Hamstead Ledge		50.43.86	01.26.18	Green Conical
7	Alitex	Alitex	50.42.97	01.28.16	Yellow Can
8	Bouldnor	Harwoods	50.42.73	01.28.69	Yellow Cylinder
9	Royal Solent YC ODM	Rouse Ltd	50.42.72	01.29.70	Yellow Cylinder
HE	East Fairway Buoy		50.42.64	01.29.88	Red Can
#	Towers		50.42.63	01.29.26	Yellow Pillar
3A(E)	West Lepe		50.45.23	01.24.09	Red Can
3C(E)	Cratinsure.com		50.45.64	01.23.12	Yellow Sphere
3D(E)	Saltmead		50.44.52	01.23.04	Green Conical
3G(E)	SevenStar Yacht Trans		50.46.58	01.21.46	Yellow Sphere
3H(E)	East Lepe		50.45.93	01.21.07	Red Can
3L(E)	Gurnard Ledge		50.45.51	01.20.59	Green Conical
3N(E)	Quinnell		50.47.07	01.19.88	Yellow Sphere
33(E)	Prince Consort		50.46.42	01.17.55	North Cardinal
<b>LYMINGTON SHORE</b>					
+	Plus Mark	BHG	50.43.78	01.31.53	Yellow Sphere
♣	West Mark	Scott Bailey	50.43.99	01.30.99	Yellow Sphere
	Baverstock	Lymington Town SC	50.44.17	01.30.86	●
JB	Jack in the Basket		50.44.28	01.30.57	Red Post
XB	Cross Boom		50.44.36	01.30.58	Red Post
Y	Black & Orange		50.44.31	01.30.81	Black/Orange Sphere
@	West Reach	Jeremy Rogers Yacht	50.44.59	01.30.92	Yellow Cone
Λ	East Reach		50.44.63	01.30.80	Yellow Cylinder
Z	Black & White	Ropewalk Marine	50.44.51	01.30.56	Black/White Cone
	RLYC Platform	Royal Lymington YC	50.44.42	01.30.42	
S	East Mark	Sanders Sails	50.44.51	01.30.00	Yellow Sphere
π	Pylewell Inner		50.44.92	01.29.70	Yellow Cone
<b>YARMOUTH SHORE</b>					
11	Delphie	Delphie Lakeman Trust	50.42.48	01.29.94	Yellow Sphere
14	Stone pier	XOD Yarmouth	50.42.82	01.28.05	Yellow Sphere
15	Hallmark		50.42.63	01.28.70	Yellow Sphere
16	St Swithins		50.42.52	01.28.99	Yellow Sphere
17	Camel		50.42.57	01.29.17	Yellow Sphere
18	Mount		50.42.44	01.29.43	Yellow Sphere
19	Dinghy ODM		50.42.44	01.29.82	Yellow Sphere
<b>MARKS NOT CHARTED</b>					
M	Moveable mark				Orange Inflatable
N	Moveable windward mark				Orange Inflatable
	Gate - start/finish line when used to mark the end of a round and not the finish				
	<b>(E) – off chart to the East, (W) – off chart to the West</b>				

