



The 49th
FOLKBOAT WEEK 2014



Supported by
Lymington
Yacht Haven

SAILING INSTRUCTIONS

Saturday 16th August to Saturday 23rd August
from

THE ROYAL SOLENT YACHT CLUB
YARMOUTH, ISLE OF WIGHT

ROYAL SOLENT YACHT CLUB*Telephone: 01983 760256**Fax: 01983 761172**Email: sailing@royalsolent.org**Website: www.royalsolent.org**Commodore**Mark Hall**Vice Commodore**Dick Dawson**Rear Commodores**David Fox**Caroline Norris**Hon Treasurer**Anne Kyle**Secretary**Hamish Fletcher**Chief Race Officer**Jeremy Willcock**Hon. Sailing Secretary**Angela Cordon*

*Welcome you to Yarmouth
and wish you an exciting and enjoyable Regatta*

FOLKBOAT ASSOCIATION

Chairman	Mr Matthew Jones
Technical Chairman	Mr David Gredley
Secretary/Treasurer	Mr Tony Blachford

SOUTH COAST AREA COMMITTEE

Chairman	Mr R G Walters
Secretary	Mrs P Walters
Treasurer	Mr B Turner
Racing Representative	Mr C Hills
Cruising Representative	Mr R Wilks
Social Secretary	Mrs J Wilks
Press Representative	Mr Tony Blachford

FOLKBOAT WEEK

SAILING INSTRUCTIONS

1 RULES

- 1.1 The organising authority is the Royal Solent Yacht Club
- 1.2 The event will be governed by The Racing Rules of Sailing (RRS), and the regulations of the British Folkboat Association and the Nordic Folkboat International Association, except as any of these are changed by these sailing instructions. The event is designated Category A as in ISAF Regulation 20.
- 1.3 RRS 64.1(a) is modified. Except for infringements to Parts 1 and 2 of the RRS in the case of an infringement to the RRS, the Protest Committee may decide what penalty to apply.
- 1.5 RRS 35 is modified in that boats failing to finish within twenty minutes after the first boat in her class finishes or within the published time limit, whichever is the later, will be scored Did Not Finish.
- 1.6 RRS 28.1 is modified by the addition of :-
'The race committee may disqualify (DSQ) without a hearing a boat that has broken this rule but only when two members of the race committee have seen the incident. The boat so penalised shall be informed by notification in the race results.'
- 1.7 Nordic Folkboat International Association Rules 13.10 (Crew numbers) shall not apply.
- 1.8 Boats are permitted to use spinnakers as in British Folkboat Association Rule 9.1

2 ELIGIBILITY and SAFETY

- 2.1 Racing will be open to Folkboat class boats.

2.2 Eligibility

For a boat to be eligible to race it shall:

- 2.2.1 Have sent in a completed entry form, which has been received by the organising authority by 8th August 2014.
- 2.2.2 Each participating boat shall be insured with valid third-party liability insurance with a minimum cover of £2,000,000.
- 2.2.3 Be registered with the United Kingdom Folkboat Association.
- 2.2.4 The helmsman shall be a fully paid up member of the United Kingdom Folkboat Association.
UK Class Rule 3.2 (eligibility of helmsman) may be waived at the discretion of the Race Committee.

2.3 Safety

- 2.3.1 A boat is entirely responsible for its own safety, whether afloat or ashore, and nothing, whether in the Notice of Race or these Sailing Instructions or anywhere else, reduces this responsibility. It is for the boat to decide whether it is fit to sail in the conditions in which it will find itself. By launching or going to sea, the boat confirms that it is fit for those conditions and that its crew is competent to sail and compete in them. Nothing done by the organisers can reduce the responsibility of the boat nor will it make the organisers responsible for any loss, damage, death or personal injury, however it may have occurred, as a result of the boat taking part in the racing. The organisers encompass everyone helping to run the race and the event, and include the Organising Authority, the Race Committee, the Race Officer and patrol boats. The boat is responsible to ensure that it is equipped and seaworthy so as to be able to face extremes of weather, that there is a crew sufficient in number, experience and fitness to withstand such weather, and that the safety equipment is properly maintained, stowed and in date and that the crew know how to use it.
- 2.3.2 A boat which retires from a race shall make every effort to ensure that the race committee is notified as soon as possible and before returning to her berth. Failure to comply may result in disqualification from the race. (VHF Radio Channel 37, M1)

2.3.3 Nordic Folkboat International Class Rule 11.10 will not apply. Boats shall comply with British Folkboat Racing Regulations Rule 2.1. The following shall be aboard at all times during the regatta:

- ◆ Two safety harnesses.
- ◆ A life-jacket for each person.
- ◆ Lifebuoy and buoyant line.
- ◆ An in date easily accessible fire extinguisher suitable for marine use.
- ◆ A bilge pump permanently installed.
- ◆ A paddle not less than 1.4m long.
- ◆ Distress flares comprising 2 in date red and 2 in date orange smoke flares.
- ◆ A bucket or bailer of not less than 9 litres capacity.
- ◆ A suitable anchor of minimum weight of 12kg. Alternatively, an anchor of minimum weight of 6kg and attached chain, which together weigh a total of not less than 12kg.
- ◆ Not less than 25m of anchor warp and/or chain. The warp shall be synthetic, and have a diameter of not less than 12mm, or be tape of a width not less than 25mm of at least the same breaking load.
- ◆ Two mooring lines with a total length of not less than 20m and a diameter of not less than 12mm.

3 NOTICES TO COMPETITORS AND CHANGES IN SAILING INSTRUCTIONS

3.1 Notices to competitors will be posted on the official Folkboat Week Notice Board located in The Royal Solent Yacht Club.

3.2 Any change to the sailing instructions will be posted at least two hours before the advertised start of the race(s) concerned.

3.3 Flag “Third Substitute” when flown afloat means “an amendment to sailing instructions or notice to competitors has been published” and the sequential number of the amendment will be flown inferior to flag “Third Substitute”.

4 SIGNALS MADE ASHORE

4.1 All signals made ashore will be displayed inferior to Flag F from The Royal Solent Yacht Club flagstaff.

FOLKBOAT WEEK



5 SCHEDULE OF RACES AND CLASS FLAGS

- 5.1 The programme of racing will be in accordance with the schedule in Appendix 1 of the sailing instructions but may be amended by the race committee.
- 5.2 The Open Division class and warning flag will be flag "F". The Cruiser Division class and warning flag will be flag "A".
- 5.3 All boats shall fly their class flag on their backstay.
- 5.4 All boats shall fly the sponsor's flag "Lymington Yacht Haven " from their backstay.

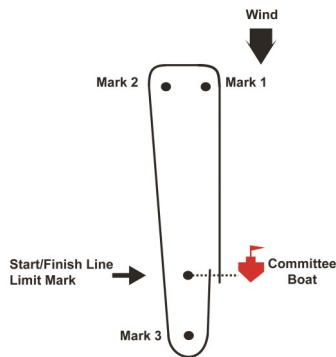
6 RACE AREA

- 6.1 The race area will be the Solent and Christchurch Bay .

7 COURSES

- 7.1 Each mark (navigation buoy or special racing mark) has been allocated a symbol (letter or number) as shown in Appendix 2.
- 7.2 The course to be sailed will be indicated by the symbols displayed on boards on one side of the Committee Boat. The symbols will be displayed in the order in which the marks shall be rounded or passed. Marks indicated by symbols on a green background shall be rounded or passed to starboard. Marks indicated by symbols shown on a red background shall be rounded or passed to port. The course for events 3 (Christchurch Ledge) and 5 (Long Solent) will be broadcast on VHF Radio Channel 37 (M 1). For events 6,7 & 8 see 7.7 overleaf.
- 7.3 All marks shall be rounding marks unless the alteration of course is less than 90 degrees when they shall be passing marks.
- 7.4 When two or three white diamond shapes are displayed with the course signal the course shall be sailed two or three times round respectively. Boats shall pass through the gate formed by the committee boat and a Distance Mark from the direction of the previous mark at the end of each round before commencing the next round.

- 7.5 When '□' is displayed as part of the course signal, it indicates that boats shall pass through the gate described in 7.4 above from the direction of the previous mark.
- 7.6 When one or more movable marks (symbol M or N) is in the course, its approximate magnetic bearing from the Committee Boat may be displayed at the warning signal. Bearings will be in three figure degree notation. If both movable marks are in the course two bearings may be displayed in the order in which the marks are to be rounded or passed.
- 7.7 For events 6/7/8 (Nordic/Open) and 6/7 (Cruisers) the courses will be as follows:
 Either a red or a green flag will be flown from the committee boat. The diagram below is based on the red course (port rounding). For the green course (starboard rounding) the diagram would be reversed.



For the Red Course

- Mark 1 to port
- Mark 2 to port
- Mark 3 to port
- Finish/Start Line

For the Green Course

- Mark 2 to starboard
- Mark 1 to starboard
- Mark 3 to starboard
- Finish/Start Line

Please note that boats shall pass through the finish line at the end of each round i.e after the Leeward mark.

Boats shall NOT pass through the line on the down wind leg.

The number of rounds will be indicated on the Committee boat course board by diamond symbols.

FOLKBOAT WEEK



- 7.8 If flag 'R' is flown from the committee boat, then the race shall be sailed 'without spinnakers'.
- 7.9 After a boat has started, and whilst racing, the following shall only be passed on the channel or seaward side:
- a) Cross Boom and all beacons and posts in the Lymington River entrance, except Jack in the Basket which may be passed on either side.
 - b) The RLymYC Starting Platform and the inner limit mark which may be laid close to it.
 - c) The barrier off Durns Point.
 - d) A white spherical buoy (Yarmouth Spice) approx one metre Diameter situated south east of the inner trot of harbour moorings to the west of Yarmouth Harbour entrance.

8 THE START

- 8.1 The Committee Boat will be identified by a Royal Solent Yacht Club burgee at the masthead and a white banner with ROYAL SOLENT YC COMMITTEE thereon.
- 8.2 Boats are requested to identify themselves by displaying their sail numbers before the start of each race by passing close to the committee boat on the opposite side to the starting line. Boats not so identified may not be finished.
- 8.3 Races will be started using RRS 26 with the warning signal five minutes before the start.
- 8.4 The starting line will be between a staff displaying an orange flag on the committee boat and the course side of the outer distance mark..
- 8.5 The Cruiser Division will start 10 minutes after the Open Division, except races 6/7, when the start will be 5 minutes after the Open Division.
- 8.6 Information with regard to OCS boats may be transmitted on VHF Radio channel 37.

9 THE FINISH

- 9.1 The finishing line will be between the staff displaying an orange flag on the committee boat and an orange inflatable buoy. EXCEPT that on the last or only race of the day the finishing committee boat identified by flying a blue flag may relocate to the fixed moorings off the Royal Solent Yacht Club. The finish will then be between the finishing Committee Boat and the Royal Solent Yacht Club outer distance mark. (not windward/ leeward races).

10 TIME LIMIT

- 10.1 The time limit will be as laid out in Appendix 1. Boats failing to finish within 20 minutes after the first boat in her class finishes or within the published time limit, whichever is the later, will be scored Did Not Finish. This changes rule RRS 35.

11 PROTESTS

- 11.1 A protesting boat shall notify the race committee aboard the committee boat of her intention to protest immediately after finishing or as soon as possible after retiring from a race and advise the number(s) of the protested boat(s) and receive acknowledgement.
- 11.2 Protests shall be written on forms available from The Royal Solent Yacht Club Race Office and not withstanding RRS 61.3 be lodged there within one and a half hours of the protesting boat finishing the last race of the day.
- 11.4 The time and place of protest hearings will be posted on the Notice Board in the hall of the Royal Solent Yacht Club.
- 11.5 RYA Rules Dispute Advisory and Mediation Hearings are available.

FOLKBOAT WEEK



12 SCORING

- 12.1 The Open Division including both Nordic and non Nordic boats will be scored as one class. The Cruiser Division will be scored separately.
- 12.2 In both the Open and Cruiser Divisions the series scores shall be as per RRS Appendix A2 and A4.1 Low Points System. When fewer than five races have been completed, a boats series score will be the total of her race scores.

13 PRIZES

- 13.1 Prizes will be presented as detailed in the Notice of Race.

14 DISCLAIMER OF LIABILITY

- 14.1 Competitors participate in the Regatta entirely at their own risk. See Rule 4, Decision to Race. The organizing authority will not accept any liability for material damage or personal injury or death sustained in conjunction with or prior to, during or after the regatta

FOLKBOAT WEEK 16th August to 23rd August 2014 Racing Programme

EVENT	DATE AUGUST	HW Ports BST	RACES	START TIME	TIME LIMIT
	Saturday 16th				
1/2	Sunday 17th	05:02 17:35	Trophy Races ~ Two races OD & CD Back to Back Race 1 Pts 1/2. OD Scaryacht Nordic Plaque Pts 1/2. CD Scaryacht Rose Bowl	Not before 12:00	2½ hours per race
3	Monday 18th	05:58 18:27	Christchurch Ledge Race Pts 3. OD-Alan Davis Salver Pts 3. CD-Jack Riddle Trophy	Not before 10:00	6 hours after valid start time
4	Tuesday 19th	07:00 19:30	AM: Ladies Race back to back With The Crew's Race PM: Trophy Race Pts 4: OD ~ Wyvern Batt Trophy Pts 4: CD ~ Tonic Trophy	Not before 10:00 Not before 14:30	1½ hours per race 2 hours after valid start time
	Wednesday 20th	08:10 20:38	Lay Day		
5	Thursday 21st	09:24 21:41	Long Solent Pts 5: OD ~ Lym Yacht Haven Trophy Pts 5 CD ~ Colin Grey Trophy	Not before 10:00	6 hours after valid start time
6/7/8	Friday 22nd	10:30	Pts 6/7/8 OD Three Windward / Leeward Back to Back, Ratsey & Laphorn Trophy Pts 6/7 CD Two Windward / Leeward Back to Back, Lymington Yacht Haven Tankard Location to be advised	Not before 10:30	2 Hours per race
9 OD 8 CD	Saturday 23rd	11:07	Points Race Pts 9. OD Pts 8. CD PM Spare	Not before 10:30	2½ hours after valid start time

Notes: Cruiser Division boats start **TEN MINUTES AFTER** the Open Division Except for races 6 & 7 in the Cruiser Division which will be **FIVE MINUTES AFTER** the Open Division.

Abbreviations:- **CD** ~ Cruiser Division **OD** ~ Open Division

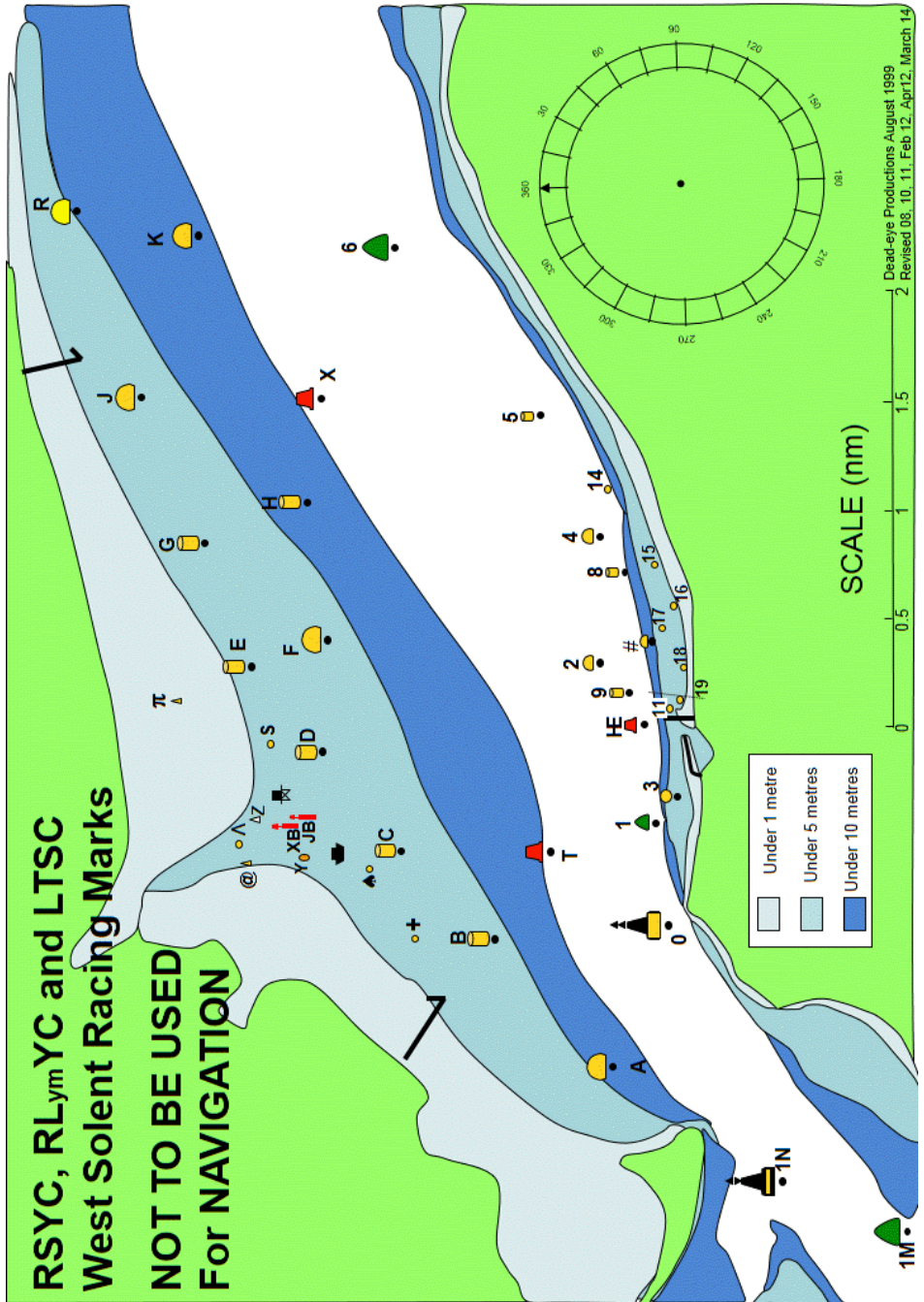
All starts from Committee Boat in Bouldnor Bay area unless otherwise advised.

The Race Committee reserves the right to change the schedule of races.

FOLKBOAT WEEK 16th August to 23rd August 2014 APPENDIX A
Social Programme

EVENT	DATE AUGUST	TIME	SOCIAL EVENTS
	Saturday 16th	19:00 for 19:30	Folkboat Welcome Drinks & Supper at RSYC Supported by Lymington Yacht Haven
1/2	Sunday 17th	09:00 19:00 19:00 for 19:30	Briefing at RSYC Prize Giving Quiz & Supper at RSYC
3	Monday 18th	18:30 19:30	Pontoon Cocktail Party Prize Giving on Pontoons
4	Tuesday 19th	19:00 19:30	Prize Giving at RSYC BBQ at RSYC
	Wednesday 20th		Supper at 'On The Rocks'
5	Thursday 21st	18:30 19:30	South Coast AGM at RSYC Prize Giving followed by Curry Supper at RSYC
6/7/8	Friday 22nd	18:00 19:30	Royal Naval Tot Club of Antigua & Barbuda Prize Giving at RSYC Supper available at the RSYC if booked
9 OD 8 CD	Saturday 23rd	19:00 for 19:30	End of Regatta Drinks, Dinner & Prize Giving at RSYC supported by Lymington Yacht Haven Bar Open until 23:45 hrs

Racing Marks 2014					
	Name	Sponsor	N Lat	W Long	
1E(W)	Christchurch Ledge		50.41.56	01.41.50	Yellow sphere
1G(W)	SW Shingles		50.39.35	01.37.45	Red pillar
1H(W)	Bridge		50.39.63	01.36.88	YBY Pillar
1J(W)	Shingles Elbow		50.40.36	01.36.05	Red can
1K(W)	North Head		50.42.68	01.35.51	Green Can
1N	NE Shingles		50.41.96	01.33.40	East cardinal
1M	Warden		50.41.48	01.33.55	Green Can
A	Hurst	Echopilot	50.42.79	01.32.53	Yellow sphere
B	Pennington	Dunford	50.43.38	01.31.54	Yellow cylinder
C	Oxey	Colten	50.43.83	01.30.86	Yellow cylinder
D	Royal Lymington	Yacht Haven	50.44.17	01.30.10	Yellow cylinder
E	Pylewell	Folkboats UK	50.44.58	01.29.43	Yellow cylinder
F	Berthon	Berthon	50.44.20	01.29.22	Yellow sphere
G	Tanners	Bridgefords	50.44.79	01.28.47	Yellow cylinder
H	Jackson	Paul Jackson	50.44.30	01.28.16	Yellow cylinder
J	Sowley	Zwerver	50.45.11	01.27.33	Yellow sphere
K	Quod Possumus!	Quod Possumus!	50.44.83	01.26.09	Yellow sphere
R	Durns	Durns	50.45.43	01.25.89	Yellow sphere
T	Lymington Bank		50.43.10	01.30.85	Red Can
X	Solent Bank		50.44.23	01.27.37	Red Can
0	Sconce		50.42.52	01.31.43	North Cardinal
1	Black Rock		50.42.58	01.30.59	Green cone
2	George Hotel	The George Hotel	50.42.86	01.29.40	Yellow sphere
3	Harbour	Yarmouth Folkboats	50.42.47	01.30.43	Yellow sphere
4	The English Summer Berry Co	The English Summer Berry Co	50.42.86	01.28.42	Yellow sphere
5	Harken	Harken	50.43.15	01.27.49	Yellow cylinder
6	Hamstead Ledge		50.43.86	01.26.18	Green conical
8	Bouldnor	Harwoods	50.42.73	01.28.69	Yellow cylinder
9	R Sol YC ODM	Charles Stanley	50.42.72	01.29.70	Yellow cylinder
HE	East Fairway Buoy		50.42.64	01.29.88	Red can
#	Towers		50.42.63	01.29.26	Yellow pillar
3A(E)	West Lepe		50.45.23	01.24.09	Red Can
3C(E)	Cratinsure.com		50.45.64	01.23.12	Yellow sphere
3D(E)	Saltmead		50.44.52	01.23.04	Green
3G(E)	SevenStar Yacht Trans		50.46.58	01.21.46	Yellow
3H(E)	East Lepe		50.45.93	01.21.07	Red Can
3L(E)	Gurnard Ledge		50.45.51	01.20.59	Green Can
3N (E)	Quinnell		50.47.07	01.19.88	Yellow
33(E)	Prince Consort		50.46.41	01.17.56	North Cardinal
Lymington shore					
+	Plus Mark	BHG	50.43.78	01.31.53	Yellow sphere
◆	West Mark	Scott Bailey	50.43.99	01.30.99	Yellow sphere
■	Baverstock	Lym Town SC	50.44.17	01.30.86	■
JB	Jack in the Basket		50.44.28	01.30.57	Red post
XB	Cross Boom		50.44.36	01.30.58	Red post
Y	Black & Orange		50.44.31	01.30.81	Black/orange sphere
@	West Reach	Jeremy Rogers Yacht	50.44.59	01.30.92	Yellow cone
λ	East Reach		50.44.63	01.30.80	Yellow cylinder
Z	Black & White	Ropewalk Marine	50.44.51	01.30.56	Black/white cone
⚓	RLYC Platform		50.44.42	01.30.42	⚓
S	East Mark	Sanders Sails	50.44.51	01.30.00	Yellow sphere
π	Pylewell Inner		50.44.92	01.29.70	Yellow cone
Yarmouth shore					
11	Pier		50.42.48	01.29.94	Yellow sphere
14	Stone pier	XOD Yarmouth	50.42.82	01.28.05	Yellow sphere
15	Hallmark		50.42.63	01.28.70	Yellow sphere
16	St Swithins		50.42.52	01.28.99	Yellow sphere
17	Camel		50.42.57	01.29.17	Yellow sphere
18	Mount		50.42.44	01.29.43	Yellow sphere
19	Dinghy ODM		50.42.44	01.29.82	Yellow sphere
Marks not charted					
M	Moveable mark				Orange inflatable
N	Moveable windward mark				Orange inflatable
□	Gate - start/finish line when used to mark the end of a round and not the finish				
(E) – off chart to the East, (W) – off chart to the West					



Dead-eye Productions August 1999
 2 Revised 08, 10, 11, Feb 12, Apr12, March 14



SAVE THE DATE!

50th
FOLKBOAT WEEK
2015

22nd - 29th August