



Notices of Race
&
Supplemental Sailing Instructions

2019

Royal Solent Yacht Club
Yarmouth Isle of Wight



Royal Solent Yacht Club

*Royal Solent Yacht Club is a trading name of Royal Solent Yacht Club Ltd
Registered Office, Yarmouth, Isle of Wight, PO41 0NS
Registered in England No 05272681*

Commodore	Anne Kyle
Vice Commodore	Martyn Collinson
Rear Commodore (Sailing)	Katie Davies
Rear Commodore (House)	Miles Peckham
Secretary	Claire Hallett
Sailing Secretary /CRO	Jeremy Willcock

Telephone Numbers

Office	(01983) 760256
Members	(01983) 760239
Caterer	(01983) 760110
Fax	(01983) 761172
Email: office@royalsolent.org ; sailing@royalsolent.org	
Web Site: www.royalsolent.org	



CONTENTS

	Page
Notices to Competitors	4
Spence Willard Wednesday Evening Series	6
Notice of Race & Supplemental Sailing Instructions	
Harwoods Fandango Charity Race	9
A fun race for Sail & Motor Boats and Kayaks	
Notice of Race & Supplemental Sailing Instructions	
Sunset Series	12
Notice of Race & Supplemental Sailing Instructions	
Royal Artillery Regatta	14
Centenary Chase	20
Turkey Cup	27
Winter series & Boxing Day	33

**All Race Entry Forms can be downloaded from the
Club Website or obtained from
and returned to the Sailing Office**

Up-to-date Race/Event information to be found on website

NOTICES TO COMPETITORS

VISITORS

The Flag Officers and Members of the Royal Solent Yacht Club extend a warm welcome to competitors as visitors to the Club. They are requested to sign and enter their name and address in the Visitors' Book situated on the first floor landing and should acquaint themselves with the Bye-Laws of the Royal Solent Yacht Club, posted on the Club notice board, particularly those concerning dress.

AVOIDING POSSIBLE COLLISION WITH FERRIES

Competitors are reminded that under rule 9 (b) of the International Regulations for Preventing Collisions at Sea "a vessel of less than 20 metres in length or a sailing vessel shall not impede the passage of any other vessel navigating within a narrow channel or fairway". The approach to Yarmouth Harbour between the Harbour East buoy (The Fairway Buoy) and the Harbour is considered to be a fairway.

Ferries have extreme difficulty in strong winds and tides when approaching or leaving Yarmouth Harbour and competitors should err on the side of safety and give way early if there is any possible doubt.

RYA RACING CHARTER

Competitors should note that the Royal Solent Yacht Club implements the RYA Racing Charter and that they will be required to undertake to sail in accordance with the charter, which can be found in the front pages of the RYA Rule Book (Racing Rules of Sailing 2017-2020 or at www.rya.org/racing/charter).

CONDITION OF ENTRY FORM

All competitors **MUST** complete and sign the Entry Form and return it to the Sailing Secretary **prior to taking part in their first race of the season**. It is essential that this form is completed in **FULL**.

ABBREVIATIONS

Throughout this document, the following definitions are in force:
RRS-Racing Rules of Sailing 2017-2020: RSYC-Royal Solent Yacht Club
SSI-Standard Sailing Instructions: Supp SI-Supplemental Sailing Instructions

The Spence Willard
WEDNESDAY EVENING SERIES
2019

Series 1 - Wednesday 24th April - Wednesday 5th June

Series 2 - Wednesday 12th June - Wednesday 24th July

Series 3 - Wednesday 31st July - Wednesday 11th Sept.

**The Harwoods Fandango is on 7th August which is in place of
Series 3 Please complete separate entry form**

Champagne Race - Wednesday 18th September

Wednesday Evening Prize Giving and Supper
Wednesday 25th September

Sailing Supper served every Wednesday after racing
20:00-21:00hrs

All Skippers and Crew Welcome

Please reserve your meal in advance online

Race Status will be displayed online by 16:30hrs each Wednesday

WEDNESDAY EVENING SERIES 2019

Notice of Race & Supplemental Sailing Instructions

1. ORGANISING AUTHORITY

- 1.1 The Organising Authority is The Royal Solent Yacht Club.

2. RULES

- 2.1 Racing will be governed by the Racing Rules of Sailing 2017-2020, the RSYC Standard Sailing Instructions 2019, and the Notice of Race/Supplemental Sailing Instructions. In cases where there is conflict between the Notice of Race, and/or the Club's Standard Sailing Instructions, and/or the Supplemental Sailing Instructions, the Supplemental Sailing Instructions, or failing that, the Standard Sailing Instructions shall prevail.
- 2.2 In addition to the changes made to the RRS by the SSI, further changes are made in these sailing instructions as follows: RRS 27.1 is changed by 6.1, RRS 35 by 8.1, RRS App A by 9.1 and 9.5
- 2.3 Class Rules shall apply except as changed by the SSI.

3. SCHEDULE OF RACES

- 3.1 Series 1 24th April to 5th June inclusive - 7 Races
Series 2 12th June to 24th July inclusive - 7 Races
Series 3 31st July to 11th September - 6 Races (5 for FB)
NB No Racing in this Series on August 7th (Fandango Charity Fun Race)
Champagne Race Wednesday 18th September

4. CLASSES/HANDICAPPING

- 4.1 Class 1 :- Fast Cruisers: NHC Base TCF 0.865 and above.
Class 2 :- Slow Cruisers: NHC Base TCF 0.864 and below.
Class 3 :- Open Day Boats: NHC handicap.
FB. :- Folkboats
Dinghies:- Laser, Laser Radial, Laser 4.7 or dinghies with PYN between 1042 - 1195
Laser entrants shall nominate, prior to their first race in each series, a sail size for that series. Any change to that sail size during the Series shall be given in writing to the Sailing Office prior to the start of the race.

5. WARNING/START TIMES & SIGNALS

5.1	Class	Warning Signal	Start Signal *	Class Flag
	Class 2	17:40	17:45	Numeral 2
	Class 1	17:50	17:55	Numeral 1
	Folkboats	18:00	18:05	F
	Class 3	18:05	18:10	Numeral 3
	Dinghies	18.15	18:20	D

***Start times will be 30 minutes earlier for Series 3 Race 6 and for the Champagne Race.**

5.2

Standard SI 9.3 is supplemented in that Class 2 boats which are having difficulty crossing the line (or Getting back to it). may, 10 minutes after that start signal, sail straight to the first mark without returning to cross the starting line.

5.3 **Class 2** boats may use their engines up to the one minute signal.

6. COURSES

6.1 The course to be sailed will be displayed at or before the preparatory signal in a frame on the main Committee Boat & may be broadcast via VHF Radio CH 37A [M1]. This changes RRS 27.1. If race is to be run from Grants, course will be displayed in a frame.

7. FINISHING

7.1 Should the first boat in her race fail to complete the course within the time limit, the results of the race will be determined by the placings of the boats through the gate when '□' is a mark of the course.

8. TIME LIMIT

8.1 RRS 35 and SSI 10.1a) is changed: The time limit for all classes is 20:00hrs
8.2 Boats that do not finish within the time limit, or within 30 minutes of the first boat in the same race to sail the course as required by RRS 28.1 and finish within the time limit, whichever is the later, will be scored DNF. This changes RRS 35 and SSI 10.1

9. SCORING

9.1 Scoring will be in accordance with RRS Appendix A low points system, except that the score for DNC will be decided by the Race Management

9.3 Discards in all Three Series are as below: This changes RRS Appendix A.

Races	Discards
7	3
6	2
5	1
4 or fewer	0

10. HANDICAPPING

- 10.1 Handicaps will be determined by the Handicap Sub Committee or its nominee and may be posted on the Club board prior to racing each week.

11. SAFETY

- 11.1 Attention is drawn to 5.3 herein.
- 11.2 When the Y flag/board is displayed all competitors must wear personal flotation devices.
- 11.3 Personal flotation devices must be worn at all times on dinghies.
- 11.4 All boats shall keep clear of the starting line during preceding Start sequences.
- 11.5 **Attention is drawn to SSI 14 : Safety/Risk Statement/Inspection/Insurance**

12. PRIZE GIVING & PRIZES

- 12.1 The prize giving and supper will be held at the Club on Wednesday 25th September 2019 at 19:00 for 19:30 hrs.
- 12.2 Prizes to be awarded are: The RSYC Challenge Bowl, The Leveson Gower Bowl, The Hempstead Trophy, The Ambitron Trophy, The Secretary's Pot and the B&8 Dish.



FANDANGO CHARITY FUN RACE

Wednesday 7th August 2019

SAILING INSTRUCTIONS

1. ORGANISING AUTHORITY

- 1.1 The organising authority is the Royal Solent Yacht Club.

2. RULES

- 2.1 The Fandango Fun Race will be governed by the rules as defined in the racing rules as between sailing vessels, the Collision Regulations AND THESE Sailing Instructions.

All funds raised to be donated to a charity TBA.

Sailing vessels, motorboats & RIBs may enter the race.

3. ENTRY FEE

- 3.1 A completed Entry form together with the **£10.00 entry fee**, shall be received by the Sailing Office prior to the race.
- 3.2 A **BIGGER ENTRY FEE** will be rewarded with more points.
Once the size of the entry fee has become outrageous, and therefore vulgar, points will be deducted from such an entry.

4. COMMUNICATION WITH COMPETITORS

- 4.1 Notices to competitors will be posted on the official notice board at the Royal Solent Yacht Club ("RSYC").
- 4.2 There will be a briefing on race day at **RSYC at 16:15** at which a representative from each competing boat shall attend.
- 4.3 A list of entries will be published on the official notice board at the RSYC.
- 4.4 A boat that retires from the race shall notify the Race Committee by radio on Channel 37A [M1] as soon as possible.

5. CHANGES TO SAILING INSTRUCTIONS

- 5.1 Any change to the sailing instructions will be posted on the RSYC sailing notice-board before 16:15 on race day.
Changes will also be announced at the briefing.

6. SIGNALS MADE ASHORE

- 6.1 When flag Y is displayed ashore, RRS40 applies at all times while afloat (wearing of Lifejackets)

7. RACE FLAG

- 7.1 The Race Flag for the day will be a yellow **Harwoods carrier bag**. Boats not flying the race flag will have points deducted.

8. REVS

- 8.1 Powered craft must start the course and continue the course at **exactly the same RPM**. To be noted on the declaration form. Buckets used as brakes are permitted – if purchased at Harwoods.

9. MARKS

- 9.1 The marks used will be from the RSYC Western Solent Chart.

10. THE COURSE

- 10.1 The course will be **announced at the briefing** and will be repeated over the VHF radio channel 37A [M1] prior to the start sequence.
- 10.2 After the start **TWO** sound signals and a display of bunting from a Race Committee vessel will signal that the **course is reversed**.
All boats may then turn and proceed on the return leg of the race, heading to the finishing line leaving all marks on the opposite hand to the outward leg, irrespective of their position.
Boats must not turn before the signal.
The **SIGNAL** will also be broadcast on VHF Channel 37A [M1].
- 10.3 To qualify, every boat must have passed the first (qualifying) mark of the course on their outward leg.

11. THE STARTS

- 11.1 The race will be started in accordance with RRS26, with the warning signal 5 minutes before the starting signal.
- 11.2 All competitors will start at the same time.
- 11.3 Start line will be **Grants** usual club line.
- 11.4 The start **will be at 18:00**.

12. THE FINISH

- 12.1 The finishing line will be from the Club Balcony (orange flag) to No 9 buoy.

13. TIME LIMITS

- 13.1 The time limit for the first boat to finish shall be “when the Race Committee has had enough and the bar is open”. Or dusk, whichever is the sooner.

14. DISQUALIFICATION

- 14.1 The Committee will disqualify any boat, which, in their opinion is not sailed to its best advantage at all times throughout the duration of the race. Such conduct **SHALL NOT BE THE SUBJECT OF PROTEST** by any other competitor.

15. RISK STATEMENT & INSURANCE

- 15.1 As per Royal Solent Yacht Club Standard Sailing Instructions 2019.

16. SCORING SYSTEM

- 16.1 Points will be awarded on the outward leg as they pass each mark as follows
- | | |
|-------------|-----------|
| First Mark | 6 points |
| Second Mark | 7 points |
| Third Mark | 8 points |
| Fourth Mark | 9 points |
| Fifth Mark | 10 points |
| Sixth Mark | 12 points |
- 16.2 A boat reaching the sixth mark before the sound signal described in SI10.2 above, will receive a deduction of 20 points and then, reversing the order of the course, will round the sixth mark and sail back round the course to the finishing line, leaving all marks on the opposite hand to the outward leg.
- 16.3 Points will be awarded for the size of the entry fee at the discretion of the Race Committee.
- 16.4 Points will be awarded for **FANCY DRESS** at the discretion of the Race Committee starting at the briefing and also at the declaration to the Race Committee based in the bar at the RSYC.
- 16.5 **CHARITABLE CASH BRIBES** passed in **Harwoods carrier bags** will receive extra points at the discretion of the Race Committee.
- 16.6 The Committee's decision as to the allocation of points shall be final.
- 16.7 A record will be taken at each of the marks of the yachts seen to pass that mark. The onus shall be on the competitor to satisfy the Race Committee that they did pass each mark.
- 16.8 At the finishing line the leading boat will score further points for as many boats **AS STARTED** the race and the second boat one less and so on.
- 16.9 After the turning signal, if they wish, boats may sail on to round the next mark of the course and score additional points prior to returning to the finish line.
- 16.10 No points will be awarded for a disqualification or retirement.

SUNSET SERIES 2019

Monday 19th August to Thursday 22nd August

Notice of Race & Supplemental Sailing Instructions

1. ORGANISING AUTHORITY

- 1.1 The Organising Authority is The Royal Solent Yacht Club.

2. RULES

- 2.1 Racing will be governed by the Racing Rules of Sailing, the RSYC Standard Sailing Instructions 2019 and the Notice of Race and Supplemental Sailing Instructions. In cases where there is conflict between the Notice of Race, and/or the Club's Standard Sailing Instructions, and/or the Supplemental Sailing Instructions, the Supplemental Sailing Instructions, or failing that, the Standard Sailing Instructions shall prevail.
- 2.2 RRS 35 (time limits) is changed by 5 herein.
- 2.3 Class Rules shall apply except as changed by the SSI.

3. ENTRY AND ENTRY FEES

- 3.1 In addition to the RSYC Race Entry Form a Supplemental Entry form together with a **£10 entry fee** should be lodged with the Sailing Secretary before racing.

4. SCHEDULE OF RACES/TIMES AND SIGNALS

- 4.1 There will be a series of four races, with one race on each day. The race committee may add additional races if some races are lost due to inclement weather.

Dinghies/Lasers will start on the line used by the Day Boats.

	Class	Warning Signal	Starting Signal	Class Flags
For All Days of Racing except Wednesday	Class 1 & 2	17:45	17:50	No.2
	XOD & YOD	17:55	18:00	No.3
	Folkboats	18:00	18:05	F
	Dinghy/ Lasers	18:10	18:15	D

4.2 Times of start on Wednesday will be as for the Wednesday Evening Series Supp SI 5.1

5. TIME LIMIT

5.1 RRS 35 and SSI 10.1a) are changed: The time limit for all classes is two hours after the start.

6. SCORING

- 6.1 Scoring will be in accordance with RRS Appendix A “Low Point System”, except that the score for DNC will be decided by the Race Committee. Two Races are required to constitute a valid series. Each boat’s series score will be the total of her race score.
- 6.2 The scores for Race 3 (Wednesday 21st August) will also count in the Royal Solent Yacht Club Wednesday Evening Series 3 Race 3.

7. SAFETY/RISK STATEMENT/INSPECTION/ INSURANCE

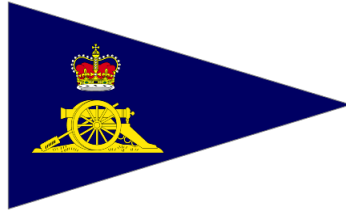
7.1 Attention is drawn to SSI 14 .

8. PRIZE GIVING & PRIZES

8.1 The Prize Giving Dinner will be held at the Club on Wednesday 25 September

The Black Rock Trophy is awarded to the XOD/YOD boat placed first overall when scored together

XOD	Henderson Vase
YOD	Sunset Trophy
FOLKBOAT	The Otter Trophy (presented at Annual Folkboat Dinner)



THE RAYC OFFSHORE REGATTA HELD AT THE ROYAL SOLENT YACHT CLUB

SATURDAY 7TH & SUNDAY 8TH SEPTEMBER 2019

GENERAL

1. ORGANISING AUTHORITY

- 1.1 The organising authority for the RA Regatta is the Royal Solent Yacht (RSYC) who will provide the Race Committee and Race Officers for the Regatta.

2. RULES

- 2.1 The races will be governed by the Racing Rules of Sailing (RRS) of the World Sailing Federation 2017 – 2020 including the prescriptions of the Royal Yachting Association (RYA), the class rules of each class concerned, except as any of these are changed by these Sailing Instructions (SI). In addition, RSYC yachts racing in the RSYC cruiser class category, Folkboat, XOD and YOD are to race in accordance with the RSYC Standard Sailing Instructions. Each JSASTC yacht shall sail carrying the complete inventory of equipment issued by JSASTC to it on takeover.

3. SAFETY & CONDITIONS OF ENTRY

- 3.1 The RAYC and RSYC accept no responsibility or liability for loss of life or injury to competitors or damage to any vessel. It is the sole and exclusive responsibility of each yacht to decide whether or not to start or continue a race.
- 3.2 All competitors must sign the RSYC Condition of Entry; copies will be available at RSYC Race Office prior to the regatta.
- 3.3 Boats must be adequately insured, with cover of at least £3 million against third party claims.

4. CLASSES TO RACE

4.1 The following classes will be available:

- Bantry Cup. IRC Handicap races for fast cruiser/racers owned, borrowed or chartered by the RAYC or its members.
- (b) Bhopal Cup. RAYC Handicap races for cruisers owned, borrowed or chartered by the RAYC or its members.
- (c) RSYC Cruiser Class. RSYC members yachts with a RSYC approved Handicap.
- (d) Folkboats
- (e) XOD
- (f) YOD

5. SCHEDULE OF RACES

5.1 **Schedule of Races for RAYC and RSYC Cruiser Classes** (See SI 9 for start sequence).

	Class and Race	Class Flag	Warning Signal	Starting Signal	Time Limit*
Sat	Bantry Cup Class Race 1	R	0950	1000	1200
	Bhopal Cup Class Race 1	NP 1	1000	1010	1210
	RSYC Cruiser Class	NP2	1010	1020	1400
	Subsequent races as determined by the Committee each with a time limit of two hours.**				
Sun	There will be a single race from the RSYC Committee Boat start line to Gilkicker Point for RAYC yachts heading back to the eastern Solent. Each yacht is then to take their finish time as they cross the line at Gilkicker.				
	Bhopal Cup & Bantry Cup Class	R	0950	1000	

** Note: If these starts follow the Folkboats, XODs or YODs, yachts should keep clear of keelboats in the starting area.

5.2 Schedule of Races for Folkboat, XOD and YOD classes

	Class	Class Flag	Warning Signal	Starting Signal	Time Limit
Sat	Folkboat	F	1405	1410	1710
	XOD	W	1415	1420	1720
	YOD	NN2	1425	1430	1730
Sun	Folkboat	F	1015	1020	1220
	XOD	W	1025	1030	1230
	YOD	NN2	1035	1040	1240

SAILING INSTRUCTIONS FOR FOLKBOATS XOD AND YOD CLASSES

- 6.1 Races for Folkboats XOD and YOD classes shall be governed by the RSYC Standard Sailing Instructions 2019, copies of which can be obtained from the RSYC, except that the time limits for all classes shall be amended to those shown above.

SAILING INSTRUCTIONS FOR CRUISER CLASSES

NOTICES TO COMPETITORS

- 7.1 Notices to competitors will be posted in the RSYC foyer.
- 7.2 Changes to SIs will be available from the RSYC and the main Committee Boat on request.
- 7.3 Changes to SIs may be made orally via VHF radio Channel M1 (37A) from the Committee Boat (COUNTDOWN). It is the responsibility of competitors to keep a listening watch at all times on that frequency, failure to hear a signal broadcast to competitors on VHF Channel M1 (37A) shall not be grounds for protest or redress.

SIGNALS AND FLAGS

- 8.1 Signals afloat will be displayed from the main Committee Boat. RRS Race Signals "L" is changed in that Flag "Third Substitute" means "a change has been made to the SI". When the Committee Boat flies flag "Third Substitute" it is the responsibility of each competitor to obtain the change in SI from the Committee Boat either orally or by VHF radio. Such amendments will be designated by a number - **the first designated by the number 3**, the second by the number 4 and subsequent amendments by sequentially larger numbers. The numeral pennant for the number designating the latest amendment, as described above, will be flown inferior to Flag "Third Substitute". This changes RRS 89.2 (c).
- 8.2 The main Committee Boat will be identified as a vessel with a white banner, with "Royal Solent YC Committee" thereon. It may be a single hull blue vessel with a white wheelhouse: 'COUNTDOWN'.
- 8.3 Each boat shall strike her ensign before her preparatory signal and, whilst racing, wear on her backstay the class pennant indicating her class.

COURSES

- 10.1 The racing area is within the Western Solent and/or the Western Approaches to the Solent. A list of the Racing Marks that may be used is shown on Pg 38.
- 10.2 Boats, in whatever direction they are racing, shall pass to the southwards of:
- (1) "Cross Boom" and all booms, beacons and posts in the Lymington River entrance.
 - (2) The Royal Lymington Yacht Club starting platform.
- 10.3 Boats shall not pass through the barrier south of Durns Point which is an obstruction to sea room.
- 10.4 Whilst racing, yachts in Cruiser Classes shall not pass inshore of any of the buoys forming the outer trot of RSYC moorings eastward of the Yarmouth pier. This area ranks as an obstruction.
- 10.5 Courses will be displayed at or before the warning signal in a frame on the main Committee Boat. Letters or numbers on a red background indicate that such marks of the course shall be rounded to port and letters or numbers on a green background indicate that such marks shall be rounded to starboard.
- 10.6 When two or three diamond shapes are displayed with the course signal, the course shall be sailed two or three times round respectively. Boats shall pass through the gate formed by the Committee Boat and a Distance Mark, from the direction of the previous mark, at the end of each round before commencing the next round.

- 10.7 If '□' is displayed as part of the course signal, it indicates that boats shall pass through the gate described in 10.6 above from the direction of the previous mark.
- 10.8 If letter "S" is displayed over letter "H" by the Committee Boat, adjacent to a mark of the course, it denotes that boats shall pass that mark in the required manner and shall then proceed directly to cross the finishing line from the direction of that mark. The Committee Boat may make repeated sound signals to draw attention to the visual signal.
- 10.9 If Moveable Mark (Designation M) is laid as a mark of the course its approximate position will be indicated on a board displayed at the main Committee Boat either as an approximate magnetic bearing and distance (in NM) from the main Committee Boat or as an approximate latitude and longitude (degrees, minutes and decimal minutes format).
- 10.10 The starting and finishing lines will be formed in the vicinity of the start as described in SIs 11.1, 11.2 by the Committee Boat. The same outer limit mark will be used for both purposes.
- 10.11 Competitors should take care to avoid the Lymington – Yarmouth Ferries, they have extreme difficulty in strong winds and tides when approaching or leaving Yarmouth Harbour and yachts should give way early if there is any possible doubt.

THE START

- 11.1 Unless in the view of the Committee conditions dictate otherwise the main Committee Boat will establish the starting line in the vicinity of **"Bouldnor" Buoy** (Designation 8). In the event that the main Committee Boat establishes the starting line elsewhere the Committee may announce its location on VHF Channel M1 (37). In any event, competitors shall be responsible for ascertaining the location of the main Committee Boat and may contact call sign 'COUNTDOWN' on VHF Channel M1 (37A) if in doubt.
- 11.2 The starting line will be an imaginary line drawn between an orange flag on the main Committee Boat and the course side of the starting/finishing line outer limit mark. If an inner limit mark is laid in the proximity of the main Committee Boat, boats shall not pass between it and the main Committee Boat at any time whilst racing. The inner limit mark will not necessarily lie on the starting line.

- 11.3 Boats shall cross the starting line in the direction of the first mark, leaving the starting line outer limit mark to port or starboard as appropriate.
- 11.4 Boats whose warning signal has not been made shall keep clear of the starting line.
- 11.5 The inner limit, if laid, and the outer limit mark will be orange inflatable buoys.
- 11.6 The main Committee Boat (COUNTDOWN) may announce the sail numbers or names or other appropriate identifying features of boats that are OCS at the start and subject to individual recall. However, a failure of the Committee Boat to announce the identity of a boat that was OCS at the start shall not be a breach of these SIs nor grounds for redress.

CENTENARY CHASE

Saturday 21st September 2019

NOTICE OF RACE AND SAILING INSTRUCTIONS

1. Organising Authority

- 1.1 The organising authority is the Royal Solent Yacht Club (RSYC).

2. Rules

- 2.1 Racing will be governed by the Racing Rules of Sailing (RRS), and this Notice of Race and Sailing Instructions (SI).

- 2.2 Changes to the RRS are as follows:

RRS 26 and 29 by SI 6.1

RRS 35 by SI 11

RRS 60 is changed by SI 14

RRS 32.1 is changed by adding paragraph 32.1(e) : *for any reason deemed necessary by the Race Committee.*

RRS 60.2 is changed by adding paragraph 60.2(d) : *disqualify without a hearing any boat observed by at least two members of the Race Officer team to have sailed an incorrect course.*

RRS 44.1 is changed so that the two turn penalty is replaced by a one turn penalty.

RRS 77 is changed by SI 5.2.

- 2.3 Class Rules will apply except that Folkboats are permitted to use spinnakers as per UK Folkboat Association Class Racing Regulations Part II 1.4 and there will be no penalty for Folkboats that do not comply with Nordic Folkboat International Association Rule 13.10 (Crew Limitations) or Rule 8.20 (headsail furling)

This varies RRS 77

3. CONDITION OF ENTRY/ELIGIBILITY

- 3.1 Keelboats and Cruisers are invited to enter by returning a completed Entry Form for this Event to the RSYC Sailing Office by Thursday 19th September. Entries after this date may be considered at the discretion of the Race Committee.

4. THE EVENT

- 4.1 The Centenary Chase is a pursuit race for keelboats and cruisers under sail. The event is a “FUN RACE” and has been designed to appeal to all members with sailing boats of differing performances.
- 4.2 A Briefing will be held at the RSYC on Saturday 21st September at 12 noon, at which Start Times and courses will be given.

5. CLASS FLAGS

- 5.1 Boats after the warning signal and whilst racing shall fly ‘**NP 1**’.
- 5.2 All boats shall clearly display their sail numbers or some other means of identification.

6. STARTING

- 6.1 RRS 26 and 29 are varied in that:
The boat with the lowest handicap will **start at 1400 hrs** with the Warning Signal (NP 1) at 1350 hrs and the Preparatory Signal (Flag P) at 1355 hrs. Thereafter boats shall start at or after their respective start times as indicated at the briefing & displayed on the notice board. Boats will start at their allocated time without further sound signals being used. This amends RRS 26. Recalls will be conducted in accordance with RRS 29.1 amended so that Flag X shall be flown only for one minute after the relevant start, notwithstanding that a boat may not by this time have sailed to the pre start side of the starting line.
- 6.2 Boats shall clear the start line no more than 10 minutes after their allotted time.

7. START LINE

7.1 The start will be from the RSYC shore-line at Grants, approximately 200 metres to the east of the RSYC and is formed by bringing the signal flagstaff bearing a horizontally striped orange and white diamond shape into line with the inner distance mark which is a white post topped with a white diamond framed orange cross approximately 15 metres to seaward of the sea wall. This mark may not necessarily be in water deep enough for all boats. The outer limit mark is a yellow cylindrical buoy marked '9' and 'Rouse Ltd' with a yellow X top-mark, located approximately 450 metres north of the signal flagstaff. This mark may not be on the line.

8 FINISH LINE

8.1 The Finish will be at Grants, and is an imaginary line between the signal flagstaff and the finishing mark, which is the yellow cylindrical buoy (No 9) approximately 450 metres north of the signal flagstaff.

8.2 Boats shall cross the finishing Line from the direction of the last mark.

9. HANDICAPS

9.1 Handicaps and Start Times will be determined by the Handicap Sub-Committee or their nominee; and will be available on the day of the race from the Club.

10. COURSES

10.1 Course 'A': Line—1—C—G—4—Line (or reverse)

Course 'B': Line—1—8—Line twice round (or reverse)

Course 'C': As Course 'B' **BUT WITH DIFFERENT START TIMES**

10.2 One of the above three courses will be selected by the Race Committee.

A display board at Grants will show 'W' for a start in a westerly direction and 'E' for a start in an easterly direction.

The course to be sailed 'A' 'B' or 'C' will be displayed in the course frame in RED for all marks to be left to PORT or GREEN for all marks to be left to STARBOARD.

- 10.3 A diagram of racing marks is reproduced on page 37.
- 10.4 Boats in whatever direction they are racing, shall pass to the south of:
- (a) The Royal Lymington Yacht Club starting platform.
 - (b) Cross Boom
 - (c) Jack in the Basket
- and all other booms, beacons and posts in the Lymington River Entrance.
- 10.5 Boats shall not pass through the barrier and beacon off Durns Point which is an obstruction to sea room.
- 10.6 Boats in whatever direction they are racing, shall pass to the north of a spherical white buoy situated to the southeast of the inner trot of moorings, located to the west of Yarmouth Pier.

11. TIME LIMIT

- 11.1 RRS 35 is changed; the time limit will be 17:30hrs or 2hrs 30 mins after the first starting signal whichever is the later.

12. AMENDMENTS TO SAILING INSTRUCTIONS

- 12.1 Amendments to sailing instructions will be posted on the RSYC Notice Board, located opposite the Sailing Office, not later than one and a half hours before the first start.
- 12.2 Any information displayed at the Club may be displayed on the RSYC website www.royalsolent.org.

Failure to display information on the Club's website will not be grounds for redress.

13. VHF COMMUNICATIONS/SAFETY/RETIREMENT

- 13.1 A listening watch may be kept, and transmissions may be made, by the Race Committee on VHF Channel 37 (M1). The failure of competitors to receive transmissions made by the Race Committee and/or to contact the Race Committee shall not be grounds for redress.
- 13.2 A boat that retires from the race shall notify the Race Committee of her retirement on VHF CH 37 (M1) as soon as is practicable. **Failure to do so may at the discretion of the Race Committee result in disqualification.**

14. RISK STATEMENT

14.1 Rule 4 of the RRS states: “The responsibility for a boat’s decision to participate in a race or to continue to race is hers alone.” Sailing is by its nature an unpredictable sport and therefore inherently involves an element of risk. By taking part in the event, each competitor agrees and acknowledges that:

- (a) They are aware of the inherent element of risk involved in the sport and accept responsibility for the exposure of themselves, their crew and their boat to such inherent risk whilst taking part in the event;
- (b) They are responsible for the safety of themselves, their crew, their boat and their other property whether afloat or ashore;
- (c) They accept responsibility for any injury, damage or loss to the extent caused by their own actions or omissions;
- (d) Their boat is in good order, equipped to sail in the event and they are fit to participate;
- (e) The provision of a race management team, patrol boats and other officials and volunteers by the race organiser does not relieve them of their own responsibilities;
- (f) The provision of patrol boat cover is limited to such assistance, particularly in extreme weather conditions, as can be practically provided in the circumstances;
- (g) It is their responsibility to familiarise themselves with any risks specific to this venue or this event drawn to their attention in any rules and information produced for the venue or event and to attend any safety briefing held for the event.
- (h) For offshore races, they are responsible for ensuring that their boat is equipped and seaworthy so as to be able to face extremes of weather; that there is a crew sufficient in number, experience and fitness to withstand such weather and that the safety equipment is properly maintained, stowed and in date, and is familiar to the crew.

15. INSURANCE

Each participating boat shall be adequately insured with cover of at least £3,000,000 (three million pounds or the equivalent) against third party claims.

16. INSPECTION

16.1. The fact that race officials may conduct inspections of a boat does not reduce the responsibilities of each competitor set out in the Notice of Race.

17. PROTESTS AND REQUESTS FOR REDRESS

17.1 Protest forms will be available from the RSYC Sailing Office. Protests and requests for redress or reopening shall be in writing and shall be delivered to the Sailing Office within the time limit, which is not later than 60 minutes after the last boat finishes the race.

17.2 Notices informing competitors of hearings in which they are parties or named as witnesses will be posted on the RSYC Notice Board not later than 90 minutes after the protest time limit. In the event of either party failing to be present at a hearing the protest may be heard in their absence

18. ARBITRATION

18.1 RYA Arbitration of the RYA Rules Disputes Procedures may be available. See RSYC Notice Board for details.

19. PRIZEGIVING & PRIZES

19.1 Prize giving will take place at the Club at 18:30hrs: the following prizes will be awarded

Yarmouth Marine Service Trophy:

Awarded to the Overall Winner

Royal Southern Yacht Club Challenge Trophy:

Awarded to the first Royal Solent Yacht Club Member on overall results.

The Mill Road Garage Trophy

Awarded to winner of 'Old Gaffers' Class

RSYC Glass

Awarded to 1st open keel boat.

RSYC Glass

Awarded to 1st Folkboat.

The Riot Trophy

Awarded to 1st RSYC Folkboat.

Presented at the annual Folkboat Dinner

The Secretary's Prize

Awarded to the last boat to finish.

Turkey Cup Sunday 6th October 2019

Notice of Race

ORGANISING AUTHORITY

1.1 The organising authority is the Royal Solent Yacht Club.

2 Rules

2.1 Racing will be governed by the Racing Rules of Sailing, the RSYC Standard Sailing Instructions 2019, and these Supplemental Sailing Instructions. In cases where there is conflict between the Notice of Race, and/or the Club's Standard Sailing Instructions, and/or the Supplemental Sailing Instructions, the Supplemental Sailing Instructions or failing that the Standard Sailing Instructions shall prevail.

2.2 In addition to the changes made to the RRS by the SSI, further changes are made as follows: RRS 35. (Time limit), RRS 60. (Rights of protest and race committees to initiate a protest) and Race Signals. The changes will appear in full in the Sailing Instructions. The Sailing Instructions may also change other racing rules.

2.3 Class Rules shall apply except as changed by the SSI.

2.4 RRS 60.2 is changed by adding an additional paragraph 60.2 (d) which states: *disqualify without a hearing any boat observed by at least two members of the Race Committee to have sailed an incorrect course.*

3. ELIGIBILITY

3.1 A completed Entry Form for this Event shall be returned to the RSYC Sailing Secretary by Friday 4th October. Entries after this date may be considered at the discretion of the Race Committee

3.2 All boats racing under IRC rating are requested to attach a copy of their valid IRC certificate to their Entry Form; failure to supply a copy of the current certificate to the RSYC Sailing Office prior to racing may result, at the discretion of the Chief Race Officer, in disqualification.

4. TIMES & SIGNALS

Class 1	Warning Signal	Start Signal
Class Flag		
NHC/IRC/	10:25	10:30
Numeral 1		

5. RACING AREA

5.1 Racing will be within the Western **Solent and the Western Approaches**

6. SAILING INSTRUCTIONS

6.1 Sailing Instructions are appended to this Notice of Race.

7. SAFETY/RISK STATEMENT/INSPECTION/ INSURANCE

7.1 Attention is drawn to SSI 14 .

8. PRIZES & PRIZE GIVING

8.1 Prize giving will take place in the RSYC bar as soon as practicable following racing

8.2 Prizes to be awarded as follows:

Class 1 (NHC)

1st Alan Spriggs Trophy

2nd Turkey donated by Harwoods RSYC Engraved Glass

3rd RSYC Engraved Glass

IRC

1st Le Quatre Juillet Thanksgiving Day Jug (For the First IRC rated boat.)

2nd Brace of Pheasant donated by Don Wood & RSYC Engraved Glass

9. HANDICAPPING

The Race Committee will allocate non IRC entrants a TCF based on RYA NHC.

Turkey Cup Sailing Instructions

11. START

11.1 The starting line will be between a staff displaying an orange flag on the main Committee Boat and the course side of the starting mark buoy.

11.2 The starting mark buoy will be an orange inflatable buoy with Royal Solent in black thereon.

11.3 Starting times are as stated in the Notice of Race.

12. SIGNALS AND FLAGS

12.1 Signals ashore will be made from the flag staff on the RSYC Jetty.

12.2 Signals afloat will be displayed from the main Committee Boat. RRS Race Signals "L" only means 'follow this boat'. Flag "third substitute" means "a change has been made to the Sailing Instructions". When the Committee Boat flies flag "Third Substitute" it is the responsibility of each competitor to obtain the change in instructions from the Committee Boat either orally or by VHF radio. Such alterations will be designated by a sequential number the numeral pennant for which will be flown inferior to Flag "third substitute".

12.3 The main Committee Boat will be identified by a white banner with "ROYAL SOLENT YC COMMITTEE" thereon.

12.4 All boats after the warning signal and whilst racing shall fly Numeral Pennant 1 from the backstay.

12.5 Ensigns shall be struck when racing.

13. NOTICES TO COMPETITORS

13.1 Notices to competitors will be posted in the Royal Solent Yacht Club foyer and/or the Sailing Board outside the Sailing Office.

13.2 Changes to Sailing Instructions will be available from the Royal Solent Yacht Club and the main Committee Boat

13.3 Oral changes to Sailing Instructions may be given in accordance with Sailing Instruction 5.2.

14. COURSES

14.1 The racing area is within the Western Solent and the Western Approaches.

14.2 Boats, in whatever direction they are racing shall pass to the south of all booms, beacons and posts in the Lymington river entrance including the RLYC starting platform.

14.3 Boats shall not pass through the barrier and beacon off Durns Point which is an obstruction to sea room.

14.4 Boats in whatever direction they are racing, shall pass to the north of a spherical white buoy situated to the southeast of the YHA (Yarmouth Harbour Authority) inner trot of Moorings, located to the west of Yarmouth Pier.

14.5 Courses will be displayed at or before the warning signal in a frame on the main Committee Boat. Letters or numbers on a red background indicate that such marks of the course shall be rounded to port and letters or numbers on a green background indicate that marks shall be rounded to starboard. The numeric or alphabetical designations of marks used are shown in the Appendices at the end of the RSYC Standard Sailing Instructions 2019

14.6 When two or three diamonds are displayed with the course signal, the course shall be sailed two or three times respectively. Boats shall pass through the 'Gate' formed by the Committee Boat and a Distance Mark, from the direction of the previous mark on the completion of each round.

14.7 When '□' is displayed as a part of the course signal, it indicates that boats shall pass through the 'Gate' described in SI 14.6 above, from the direction of the previous mark.

14.8 When S over H is displayed by a Committee Boat adjacent to a mark of the course it denotes that boats shall pass that mark in the required manner and shall then proceed directly to cross the finishing line in the direction from that mark.

The Committee Boat may make repeated sound signals to draw attention to the visual signal.

15. FINISHING LINE

15.1 The finishing line will be between a staff displaying an orange flag on the Committee Boat and the course side of the finishing mark. Unless otherwise notified, the finishing line will be in the approximate position of the starting line.

15.2 Boats shall cross the finishing line from the direction of the last mark.

16. TIME LIMIT

16.1 The time limit for each class is **three hours** after the time that their race started or 30 minutes after the first boat to finish within the time limit in the same class, whichever is the later.

16.2 For races of more than one round when the first boat in her race fails to finish within the time limit, but has completed one or more rounds of the course, the results of the race will be determined by the placings at the end of the last completed round. If gate '□' is shown as a mark of the course and competitors are conforming to SI 7.6 this shall be deemed to be the end of a round.

16.3 No race will start after 12 noon.

17. PROTESTS

17.1 A protesting boat shall notify the Race Committee aboard the main Committee Boat of her intention to protest as soon as possible after finishing or as soon as possible after retiring from a race and advise the number(s) of the protested boat(s) and receive acknowledgment.

17.2 Protests shall be written on protest forms available from the Royal Solent Yacht Club and the completed protest form shall be delivered by hand or by email to the Royal Solent Yacht Club within 60 minutes after the last boat has finished the last race of the day.

17.3 The time and place of protest hearings will be posted on the Notice Board in the hall of the Royal Solent Yacht Club outside the Sailing office. It is the responsibility of the protestors and protestees to present themselves at the appropriate time with any witnesses they may wish to call. In the event of either party failing to be present at a hearing the protest may be heard in their absence.

17.4 The Race Committee and the Protest Committee may open a hearing or initiate a protest when they are advised by any means of injury or damage caused in an incident even if notification is by way of an invalid protest. This changes RRS 60. In the event of conflict between RRS 60 and this Sailing Instruction, this Sailing Instruction shall prevail.

18. SCORING

18.1 The Event will be scored as provided in RRS Appendix A, using the low points system.

19. RADIO

19.1 The main Committee Boat may keep a listening watch and transmit race information on Channel 37(M1). Any failure by the Committee Boat to make such transmissions shall not constitute a breach of the Sailing Instructions. Any failure of a competitor to receive a transmission made by the Committee Boat shall not be grounds for redress.

NOTICE TO COMPETITORS

**Roast Turkey & all the Trimmings will be served in the Clubhouse
between 13.00 and 14.00**

**Reservations should be made in advance
01983 760256**

WINTER SERIES & BOXING DAY RACE 2019

SERIES 1: 13 OCTOBER - 10 NOVEMBER

SERIES 2: 17 NOVEMBER - 15 DECEMBER

BOXING DAY RACE: 26 DECEMBER

NOTICE OF RACE & SUPPLEMENTAL SAILING INSTRUCTIONS

1. ORGANISING AUTHORITY

1.1 The organising authority is the Royal Solent Yacht Club.

2. RULES

2.1 Racing will be governed by the Racing Rules of Sailing 2017-2020 (RRS), the Royal Solent Yacht Club Standard Sailing Instructions 2019 (SSI), this Notice of Race (NoR) and the Supplemental Sailing Instructions (Supp SI). In cases where there is conflict between the NoR and/or the SSI, and/or the Supp SI, the Supp SI or failing that the SSI shall prevail.

2.2 SSI 10.1(a) (time limit) is changed by 8.1 herein.

2.3 The Nordic Folkboat International Association Rules (NFIA) and UK Class Rules and Regulations shall apply, except that there shall be no penalty for a breach of NFIA Class Rule 13.10 (Crew Limitation) or of NFIA Class Rule 8.20 (headsail furling) and the use of spinnakers is permitted as per UK Class Regulation Part 11 1.4

3. VHF COMMUNICATIONS

3.1 All boats are required to carry an operational VHF radio while racing.

All race communications will be on VHF Channel 37A.

4. PROGRAMME

- 4.1 Series 1: 13 October - 10 November
Series 2: 17 November - 15 December
- 4.2 Racing will be weekly on Sundays except for Series 1 Race 5, which will be Saturday 9 November.
- 4.3 Boxing Day Race: 26 December (not part of Series)

5. ELIGIBILITY/SIGNALS

- 5.1 Entries are invited from Cruisers and Folkboats, a Standard RSYC Entry Form shall be completed before a boat’s first race of the Series (needs only to have been completed once in 2019)
- 5.2 The warning and starting signals for races will be:

Class Flag	Class Signal	Warning Signal	Starting Signal
Cruisers/Folkboats	‘W’	10:25	10:30

6. STARTING

- 6.1 The Starting Line will be from ‘Grants’ in accordance with SSI 9.

7. FINISHING/COURSE INSTRUCTIONS

- 7.1 The Finishing Line will be the RSYC Balcony Line in accordance with SSI 10.4.
- 7.2 When ‘□’ is displayed as part of the course signal, it indicates that boats shall pass through the gate formed by the line described in 7.1 above from the direction of the previous mark.
- 7.3 When the first boat in a race fails to complete the course within the time limit the results of the race will be determined by the placings of the boats through the ‘Gate’ when ‘□’ is a mark of the course.
- 7.4 When two or three white diamond shapes are displayed with the course signal, it indicates that the course shall be sailed two or three times round respectively. Boats shall pass through the gate formed by the line referred to in 7.1 above, from the direction of the previous mark at the end of each round before commencing the next round.

8. TIME LIMIT

8.1 RRS 35 is changed in that the time limit for all boats shall be 12:30hrs.

8.2 If one boat sails the course as required by RRS 28.1 and finishes within the time limit, boats that do not finish within the time limit or within 30 minutes of the first boat, whichever is the later, will be scored 'Did Not Finish'.

9. SCORING

9.1 Both series will be scored in accordance with RRS Appendix A, Low Point System except that the score for DNC will be 2 more than the number of boats starting. This amends RRS A4.2

9.2 Two races in each series shall be completed to constitute a valid series.

9.3 Each boat's series score will be the total of her race scores except if four or more races are completed her worst score shall be discarded.

10. HANDICAPPING

10.1 Handicapping will be in accordance with RYA National Handicap for Cruisers.

11. PRIZES & PRIZE GIVING

11.1 The Prize-giving for Series 1 & 2 will be in the Clubhouse as soon as practicable after the race on Sunday 15 December.

11.2 The Blount Cross Cup will be presented to the overall winner of both series in the Cruiser Class.

11.3 The Prize-giving for the Boxing Day Race will be in the Clubhouse as soon as practicable after racing.

11.4 The Winston Churchill Trophy will be presented to the boat placed first in the Boxing Day Race.

12. RISK STATEMENT.

12.1 Rule 4 of the RRS states: "The responsibility for a boat's decision to participate in a race or to continue to race is hers alone." Sailing is by its nature an unpredictable sport and therefore inherently involves an element of risk. By taking part in the event, each competitor agrees and acknowledges that:

They are aware of the inherent element of risk involved in the sport and accept responsibility for the exposure of themselves, their crew and their boat to such inherent risk whilst taking part in the event;

They are responsible for the safety of themselves, their crew, their boat and their other property whether afloat or ashore;

They accept responsibility for any injury, damage or loss to the extent caused by their own actions or omissions;

Their boat is in good order, equipped to sail in the event and they are fit to participate;

The provision of a race management team, patrol boats and other officials and volunteers by the race organiser does not relieve them of their own responsibilities;

The provision of patrol boat cover is limited to such assistance, particularly in extreme weather conditions, as can be practically provided in the circumstances;

It is their responsibility to familiarise themselves with any risks specific to the venue or event drawn to their attention in any rules and information produced for the venue or event and to attend any safety briefing held for the event.

For offshore races, they are responsible for ensuring that their boat is equipped and seaworthy so as to be able to face extremes of weather; that there is a crew sufficient in number, experience and fitness to withstand such weather; and that the safety equipment is properly maintained, stowed and in date and is familiar to the crew.

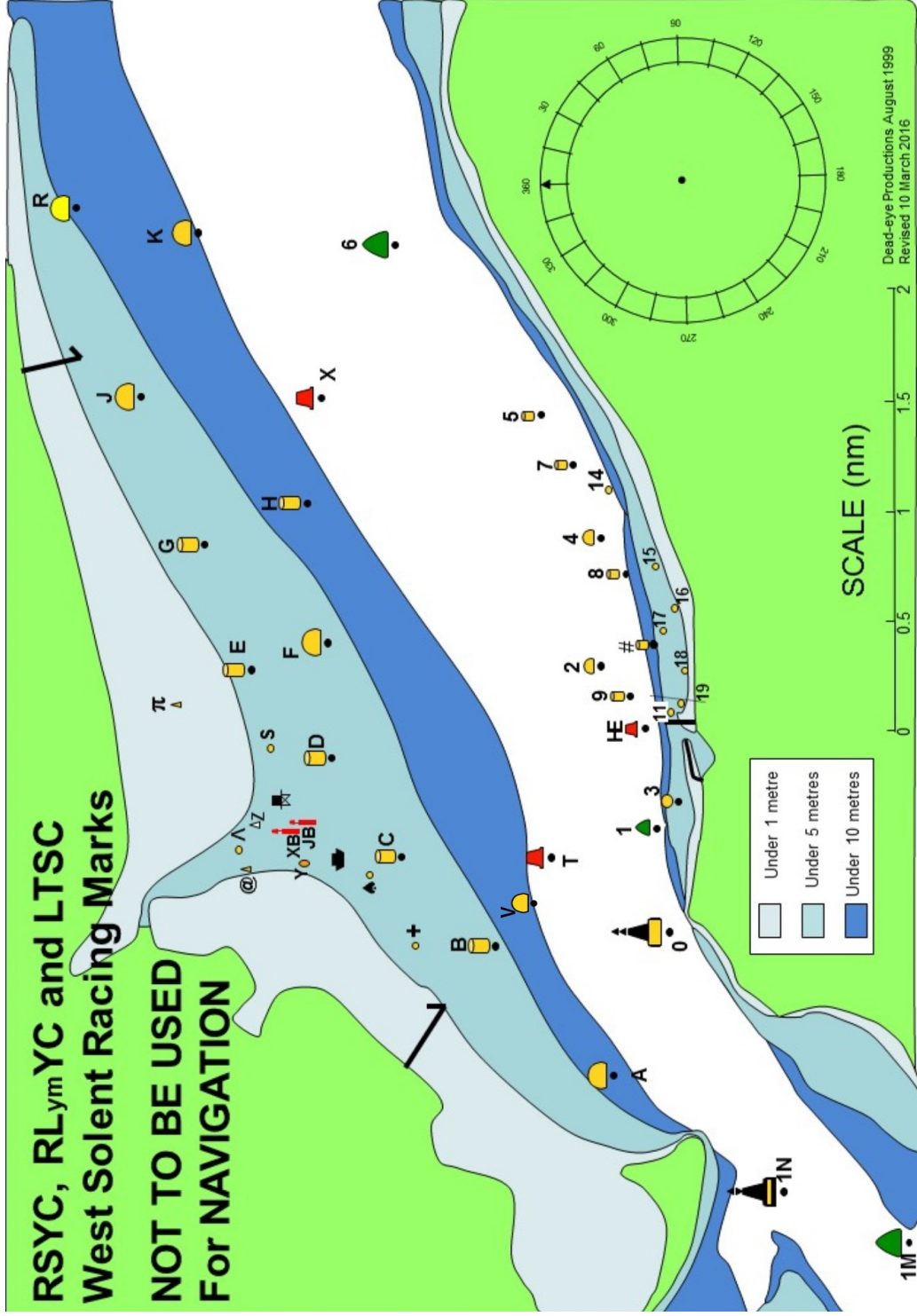
13. INSURANCE.

13.1 Each participating boat shall be insured with valid third-party liability cover of not less than £3,000,000 (three million pounds sterling) or the equivalent.

RACING MARKS 2019					
	Name	Sponsor	N Lat	W Long	
1E(W)	Christchurch Ledge		50.41.60	01.41.50	Yellow Sphere
1G(W)	SW Shingles		50.39.29	01.37.52	Red Pillar
1H(W)	Bridge		50.39.63	01.36.88	YBY Pillar
1J(W)	Shingles Elbow		50.40.36	01.36.05	Red Can
1K(W)	North Head		50.42.68	01.35.51	Green Can
1N	NE Shingles		50.41.96	01.33.40	East Cardinal
1M	Warden		50.41.48	01.33.55	Green Can
A	Hurst	Chewton Glen	50.42.79	01.32.53	Yellow Sphere
B	Pennington	Dunford	50.43.38	01.31.54	Yellow Cylinder
C	Oxey	Colten	50.43.83	01.30.86	Yellow Cylinder
D	Royal Lymington	Yacht Haven	50.44.17	01.30.10	Yellow Cylinder
E	Pylewell	Folkboats UK	50.44.58	01.29.43	Yellow Cylinder
F	Berthon	Berthon	50.44.20	01.29.22	Yellow Sphere
G	Tanners	Bridgefords	50.44.79	01.28.47	Yellow Cylinder
H	Jackson	Paul Jackson	50.44.30	01.28.16	Yellow Cylinder
J	Sowley	Zwerver	50.45.11	01.27.33	Yellow Sphere
K	Quod Possumus!	Quod Possumus!	50.44.83	01.26.09	Yellow Sphere
R	Durns	Durns	50.45.43	01.25.89	Yellow Sphere
T	Lymington Bank		50.43.10	01.30.85	Red Can
V	Victor		50.43.30	01.31.30	
X	Solent Bank		50.44.23	01.27.37	Red Can
0	Sconce		50.42.52	01.31.43	North Cardinal
1	Black Rock		50.42.53	01.30.43	Green Cone
2	Charles Stanley	Charles Stanley	50.42.86	01.29.40	Yellow Sphere
3	Folkboats Forever	Yarmouth Folkboats	50.42.47	01.30.43	Yellow Sphere
4	The English Summer Berry Co	The English Summer Berry Co	50.42.86	01.28.42	Yellow Sphere
5	Caldwells	Caldwells Estate Agents	50.43.15	01.27.49	Yellow Cylinder
6	Hamstead Ledge		50.43.86	01.26.18	Green Conical
7	Alitex	Alitex	50.42.97	01.28.16	Yellow Can
8	Bouldnor	Harwoods	50.42.73	01.28.69	Yellow Cylinder
9	Royal Solent YC ODM	Rouse Ltd	50.42.72	01.29.70	Yellow Cylinder
HE	East Fairway Buoy		50.42.64	01.29.88	Red Can
#	Towers		50.42.63	01.29.26	Yellow Pillar
3A(E)	West Lepe		50.45.23	01.24.09	Red Can
3C(E)	Cratinsure.com		50.45.64	01.23.12	Yellow Sphere
3D(E)	Saltmead		50.44.52	01.23.04	Green Conical
3G(E)	SevenStar Yacht Trans		50.46.58	01.21.46	Yellow Sphere
3H(E)	East Lepe		50.45.93	01.21.07	Red Can
3L(E)	Gurnard Ledge		50.45.51	01.20.59	Green Conical
3N(E)	Quinnell		50.47.07	01.19.88	Yellow Sphere
33(E)	Prince Consort		50.46.42	01.17.55	North Cardinal
LYMINGTON SHORE					
+	Plus Mark	BHG	50.43.78	01.31.53	Yellow Sphere
◆	West Mark	Scott Bailey	50.43.99	01.30.99	Yellow Sphere
	Baverstock	Lymington Town SC	50.44.17	01.30.86	◆
JB	Jack in the Basket		50.44.28	01.30.57	Red Post
XB	Cross Boom		50.44.36	01.30.58	Red Post
Y	Black & Orange		50.44.31	01.30.81	Black/Orange Sphere
@	West Reach	Jeremy Rogers Yacht	50.44.59	01.30.92	Yellow Cone
Λ	East Reach		50.44.63	01.30.80	Yellow Cylinder
Z	Black & White	Ropewalk Marine	50.44.51	01.30.56	Black/White Cone
	RLYC Platform	Royal Lymington YC	50.44.42	01.30.42	
S	East Mark	Sanders Sails	50.44.51	01.30.00	Yellow Sphere
π	Pylewell Inner		50.44.92	01.29.70	Yellow Cone
YARMOUTH SHORE					
11	Delphie	Delphie Lakeman Trust	50.42.48	01.29.94	Yellow Sphere
14	Stone pier	XOD Yarmouth	50.42.82	01.28.05	Yellow Sphere
15	Hallmark		50.42.63	01.28.70	Yellow Sphere
16	St Swithins		50.42.52	01.28.99	Yellow Sphere
17	Camel		50.42.57	01.29.17	Yellow Sphere
18	Mount		50.42.44	01.29.43	Yellow Sphere
19	Dinghy ODM		50.42.44	01.29.82	Yellow Sphere
MARKS NOT CHARTED					
M	Moveable mark				Orange Inflatable
N	Moveable windward mark				Orange Inflatable
Gate - start/finish line when used to mark the end of a round and not the finish					
(E) – off chart to the East, (W) – off chart to the West					

RSYC, RL_{ym}YC and LTSC West Solent Racing Marks

**NOT TO BE USED
For NAVIGATION**



Royal Solent Yacht Club

SPONSORS

2019



CHAMPAGNE
TAITTINGER
Reims



YARMOUTH
HARBOUR

SAILING OFFICE

RSYC Sailing Secretary
sailing@royalsolent.org

01983 766140