



## IW Youth & Junior Championships Series 2022

**LASER FLEETS** hosted by  
**ROYAL SOLENT YACHT CLUB**  
in Yarmouth on Saturday October 1<sup>st</sup> 2022

**INFORMATION & SAILING**  
**INSTRUCTIONS Annex A**  
**(Specific to Royal Solent Yacht Club)**



Close racing in the fleets during the 2021 IW Youth & Junior Championship Fleet in Yarmouth.  
Photo by Jenny Nichols

# IW Youth & Junior Championships Series 2022

**LASER FLEETS** hosted by  
**ROYAL SOLENT YACHT CLUB**  
in Yarmouth on Saturday October 1<sup>st</sup> 2022

## **INFORMATION & SAILING** **INSTRUCTIONS Annex A** **(Specific to Royal Solent Yacht Club)**

|                         |                                                                            |
|-------------------------|----------------------------------------------------------------------------|
| Rear Commodore Sailing  | Tom Symes                                                                  |
| Principal Race Officer  | Mark Hall                                                                  |
| Assistant Race Officers | Katie Davies Tom Symes                                                     |
| Contact details         | sailing@royalsolent.org                                                    |
| Venue details           | Royal Solent Yacht Club, The Square Yarmouth<br>PO41 0NS Tel : 01983760256 |

The Flag Officers and Members of the Royal Solent Yacht Club extend a warm welcome to competitors as visitors to the Club. Attendance of the event will constitute Temporary Membership at the club for the duration of the event.

## **INFORMATION**

### **1. ENTRY**

Enter online: <https://form.jotform.com/211745321485353>

The entry fee is £15.00 payable before or on the day via online banking or cash. The entry includes tea/coffee in the morning for competitors and supporters and a BBQ at Yarmouth Sailing Club after racing.

### **2. PARKING and RIGGING**

There is no parking available at the RSYC during the event. Boats on launching trolleys can be delivered to and collected from the RSYC but road trailers must not be left at the Club during the event. With thanks to Yarmouth Harbour Commissioners, the gate into the paddock adjacent to the YSC dinghy park will be open from 9.00am on October 1st. Coming into Yarmouth from the East the wooden field gate is on the left hand side of River Road immediately after a hedge/tree line and before the roundabout. Visitors can park there on the day.

Road Trailers must be left in the paddock and not taken into the YSC or RSYC Dinghy Parks or onto the terraces around the Clubs.

Participants using the paddock will be doing so at their own risk.

Boats should be rigged in the Dinghy Park at the RSYC.

Competitors must ensure that their trolleys are marked with their name.

A parent or guardian (or someone designated to be in loco parentis) of each participant under 18 must remain on site at all times while their child is on site or racing.

### **3    REGISTRATION**

The Registration Desk in the Club will be open from 09:30 and all competitors must register for the event. Late entries and payments will be taken at the Registration Desk.

All competitors will be given a coloured ribbon specific for their Class which **MUST** be attached to their mast head. Colours will differentiate between the three Laser classes and will facilitate management of the races.

### **4    BRIEFING**

There will be a competitor briefing on the RSYC lawn at 11:00

### **5    LAUNCHING**

All Competitors **MUST** collect a tally wristband before launching and must wear this until coming ashore and returning it to the person responsible for the tally board immediately after landing.

### **6    TIDAL INFORMATION (TIMES ARE BST)**

High Water 1st October Yarmouth is at 15.24

# SAILING INSTRUCTIONS

## 1. RULES

- 1.1 The races will be governed by the current World Sailing Racing Rules of Sailing (RRS) including the prescriptions of the Royal Yachting Association, the IW Youth and Junior Championship Series 2022 Notice of Race, the IW Youth and Junior Championship Series 2022 Sailing Instructions, these Sailing Instructions, and any relevant class rules.
- 1.2 RRS are changed in these Sailing Instructions as follows: - RRS Race Signals by SI 4.2, RRS 35 by SI 12, RRS 40 by 15.1 and RRS 63.1 by SI 17.1 and RRS 60.1 by 16.1.
- 1.3 Lasers should nominate a rig prior to the first race ie at Registration. This rig will become the nominated rig for the event. If a competitor chooses to race with a smaller rig, the handicap will be calculated using their nominated rig size. If a larger rig is used, this **SCORE WILL NOT BE COUNTED TOWARDS THE RESULTS**.

## 2. NOTICES TO COMPETITORS

- 2.1 Notices to competitors will be posted on the RSYC website or announced at the briefing.

## 3. CHANGES TO SAILING INSTRUCTIONS.

- 3.1 Change to the Sailing Instructions will be advised to competitors at the briefing

## 4. SIGNALS MADE ASHORE.

- 4.1 Signals made ashore will be made from the flagstaff on the jetty of the RSYC.
- 4.2 Flag AP with two sound signals means the racing is postponed. The warning signal will be made not less than 40 minutes after AP is lowered when on shore. This changes RRS Race Signals.

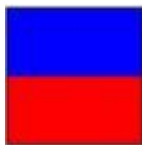


## 5. SCHEDULE OF RACES.

### 5.1 Races are scheduled as follows:

ILCA 7 (formerly Laser Standard) and ILCA 6 (formerly Laser Radial) classes may be started together.

The provisional Schedule of Races is below. However, this is subject to review when the number of entrants is known and the Race Officer may merge the ILCA 7 (formerly Laser Standard) with ILCA 6 (formerly Laser Radial).

| Class                            | Class Flag | First warning signal                    |
|----------------------------------|------------|-----------------------------------------|
| ILCA 4 (formerly Laser 4.7)      | E          | As soon as practical after the Briefing |
| ILCA 6 (formerly Laser Radial)   | K          | Five minutes after ILCA 4               |
| ILCA 7 (formerly Laser Standard) | D          | Five minutes after ILCA 6               |

|        |                                                                                   |        |                                                                                   |        |                                                                                     |
|--------|-----------------------------------------------------------------------------------|--------|-----------------------------------------------------------------------------------|--------|-------------------------------------------------------------------------------------|
| Flag E |  | Flag K |  | Flag D |  |
|--------|-----------------------------------------------------------------------------------|--------|-----------------------------------------------------------------------------------|--------|-------------------------------------------------------------------------------------|

There will be no more than three races for each fleet. Races will be back-to-back with the next race starting as soon as possible after the last boat finishes.

### 5.2 These times are a guide and may be modified for any reason.

## 6. CLASS FLAGS

### 6.1 The class flags shall be as follows:

- ILCA 4 (formerly Laser 4.7) Flag E
- ILCA 6 (formerly Laser Radial) Flag K
- ILCA 7 (formerly Laser Standard) Flag D

If classes are combined all class relevant flags will be shown.

## 7. RACING AREAS

### 7.1 Racing will be in Bouldnor Bay.

## 8. THE COURSES

### 8.1 The diagram in Appendix 1 shows the courses, the order in which the marks are to be passed and the side on which each mark is to be left.

- 8.2 Numeral Pennant 1 flown on the committee boat will designate that course is as diagram 1.  
Numeral Pennant 2 flown on the committee boat will designate that course is as diagram 2.  
Numeral Pennant 3 flown on the committee boat will designate that course is as diagram 3.  
Numeral Pennant 5 flown on the committee boat will designate the club course. Courses will be selected from the navigational buoys and racing marks close to Bouldnor Bay.

### 8.3 Letters or numbers or symbols on a red background indicate that such marks of the course shall be rounded to port and letters or numbers or symbols on a green background indicate that marks shall be rounded to starboard.

- 8.4 When two or three diamonds are displayed with the course signal, the course shall be sailed two or three times round respectively. Boats shall pass through the start line at the end of each round.
- 8.5 If symbol □ gate is shown as a mark of the course, boats shall pass through the start line from the direction of the previous mark.
- 8.6 **Sailors may not pass through the start line on the downwind leg except when sailing the club course; numeral pennant 5. If a sailor does so, they will be disqualified without a hearing.**
- 8.7 Racing marks will be Orange/Red buoys or Yellow Pillar Buoys.

## **9. STARTING**

- 9.1 Races will be started by using RRS rule 26.  
The starting line will be between a staff displaying an orange flag on the committee boat and the course side of the starting mark buoy.

## **10. FINISH**

- 10.1 The finishing line will be the same as the start line except in course 2 where there will be a separate finish line.
- 10.2 Boats that have lost contact with the majority of the fleet may be told on the water that he/she need not complete the course. An appropriate finishing position will be recorded.

## **12 TIME LIMIT**

### **RRS35 is varied in that:**

- 12.1 All races will have a time limit of 60 minutes after the valid start.
- 12.2 When the first boat in her race finishes within the time limit the race will be valid only for those boats that finish within the time limit or within 15 minutes of the first boat whichever is the later.

## **13. PROTESTS**

- 13.1 If you wish to Protest, you must protest on the water or your protest will not be upheld. Protests shall then be written on forms available at the Race Office and delivered within one hour after the time of the last boat finishing the last race of the day.
- 13.2 Protest notices will be posted within 30 minutes of the protest time limit to inform competitors where and when there is a hearing in which they are parties or named as witnesses. It shall be the responsibility of competitors to check the notice board for such notices.
- 13.3 The Exoneration Penalty and the Advisory Hearing and RYA Arbitration Procedures of the RYA Rules Dispute Procedures will be available.

## **14. SCORING**

- 14.1 A minimum of one race must have been completed to constitute a series.
- 14.2 Scoring will be in accordance with RRS Appendix A low points system.

## **15. SAFETY REGULATIONS**

- 15.1 All competitors shall always wear personal buoyancy whilst on the water. This amends RRS 40 and the preamble to part 4.

## **16. ENTRIES**

- 16.1 All competitors must have returned an online entry form before their first race.  
All competitors under the age of eighteen on 1<sup>st</sup> October 2022 must ensure a parent or guardian signs their entry form.

ENTRY FORM: <https://form.jotform.com/211745321485353>

All competitors under the age of eighteen on 1<sup>st</sup> October must ensure a parent or guardian completes an online parental consent form. This SI is not protestable and changes RRS60.1(b).

PARENTAL CONSENT FORM: <https://form.jotform.com/211104519827351>

## **17. TALLY SYSTEM**

- 17.1 A tally system will be in operation, all competitors must tally. Each competitor will be allocated a number and must collect this number before launching. This tally number must be carried with them all the time they are afloat. Competitors must sign off by returning their tally to the board as soon as they come ashore. Competitors failing to comply may be disqualified without a hearing. This changes RRS 63.1.

## **18. PRIZES**

|                                  |                |
|----------------------------------|----------------|
| ILCA 4 (formerly Laser 4.7)      | overall winner |
| ILCA 6 (formerly Laser Radial)   | overall winner |
| ILCA 7 (formerly Laser Standard) | overall winner |

- 18.1 The Prize Giving will take place as soon as possible after racing at Yarmouth Sailing Club.

## **19. BOAT HANDLING ABILITY**

- 19.1 All competitors must be capable of launching and recovering their boats as sea conditions at the RSYC slipway can be demanding. The tides may be strong and the pier is close by. This is a SAFETY MATTER and ALL COMPETITORS are solely responsible for this activity. Launching and recovery teams will be on hand but cannot guarantee to be always available at busy times. Parents are required to assist with this SAFETY task.

## **20. RISK STATEMENT**

- 20.1 Rule 4 of the RRS states “The responsibility for a boat’s decision to participate in a race or to continue in a race is hers alone.” Sailing is by nature an unpredictable sport and therefore inherently involves an element of risk. By taking part in the event, each competitor or, in the case of a junior sailor his or her parent or guardian, agrees and acknowledges that:
- a. They are aware of the inherent element of risk involved in the sport and accept responsibility for the exposure of themselves, their crew and their boat to such inherent risk whilst taking part in the event
  - b. They are responsible for the safety of themselves, their crew, their boat and their other property whether afloat or ashore
  - c. They accept responsibility for injury, damage or loss to the extent caused by their own actions or omissions
  - d. Their boat is in good order, equipped to sail in the event and they are fit to participate
  - e. The provision of the race management team, patrol boats and other officials and volunteers by the race organiser does not relieve the competitors of their own responsibilities.
  - f. The provision of patrol boat cover is limited to such assistance, particularly in extreme weather conditions, as can be practically provided in the circumstances.

- g. It is their responsibility to familiarise themselves with any risks specific to the venue or event drawn to their attention in any rules and information produced for the venue or event and to attend any safety briefing held for the event.

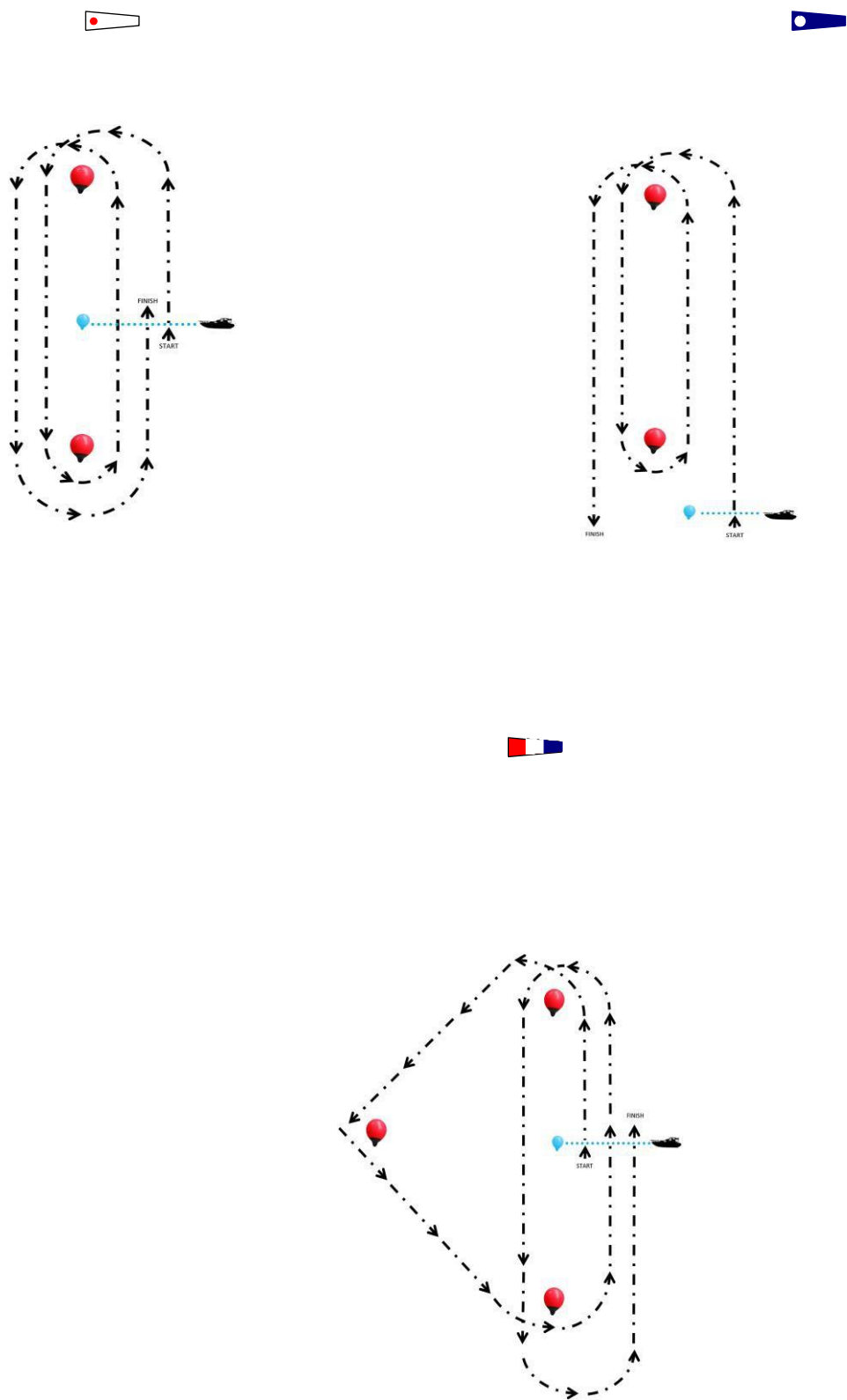
## **21. INSPECTION**

- 21.1 The fact that race officials may carry out inspections of a boat does not reduce the responsibilities of each competitor for ensuring compliance with the above.

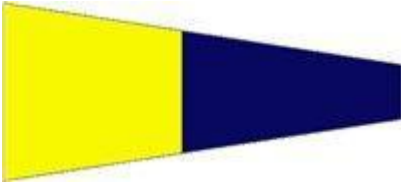
## **22. INSURANCE**

- 22.1 All boats are required to hold adequate insurance and in particular to hold insurance against third party claims including cover for racing in the sum of at least £5,000,000 (five million pounds sterling). By entering, entrants declare that such cover will be maintained in full force throughout the season and agree to allow the RSYC, at its discretion, to pass on their contact details to third party insurers in the event of a possible insurance claim.

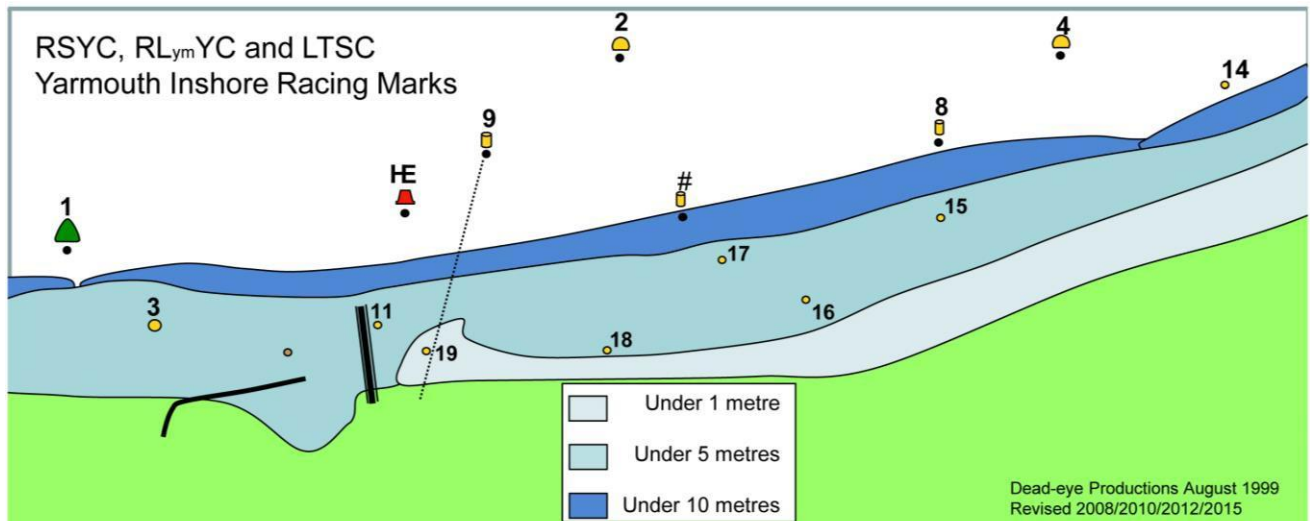
Appendix 1



## Pennant 5



## CLUB COURSE MARKS



## SOLENT INSHORE RACING MARKS

|                                               |    |
|-----------------------------------------------|----|
| Moveable windward inflatable mark             | N  |
| Moveable Leeward inflatable mark              | M  |
| Start mark/finishing line mark                | S  |
| Towers                                        | #  |
| East fairways buoy                            | HE |
| Black Rock                                    | 1  |
| Charles Stanley                               | 2  |
| Folkboats Forever                             | 3  |
| Hall Hunter                                   | 4  |
| Harwoods                                      | 8  |
| River Yar Boatyard / ODM                      | 9  |
| Stone Pier / Yarmouth XODs                    | 14 |
| 11, 15, 16, 17, 18, 19 are small dinghy marks |    |