



CHAMPAGNE  
**TAITTINGER**  
*Reims*

In association with

CHARLES  
STANLEY  
*Wealth Managers*

# SAILING INSTRUCTIONS

for

# THE TAITTINGER ROYAL SOLENT YACHT CLUB REGATTA 2016

Saturday 30<sup>th</sup> July  
and  
Sunday 31<sup>st</sup> July

To include on Saturday 30<sup>th</sup> July  
The IRC Solent Region Championship: Day 2



Supported by

YARMOUTH  
HARBOUR



## The Royal Solent Yacht Club Yarmouth, Isle of Wight

Telephone (01983) 760256

Fax (01983) 761172

Email: [office@royalsolent.org](mailto:office@royalsolent.org)

Website: [www.royalsolent.org](http://www.royalsolent.org)

### Organising Committee

Commodore	Anthony Walton
Vice Commodore	George Alford
Regatta Chairman	Dick Dawson
Rear Commodore (Sailing)	Nicholas Measor
Rear Commodore (House)	Caroline Norris
Chief Race Officer	Jeremy Willcock
Sailing Secretary	Peter Spink
Secretary	Hamish Fletcher

The Flag Officers and Members of the Royal Solent Yacht Club extend a warm welcome to competitors as visitors to the Club. They are requested to sign and enter their name and address in the Visitors' Book situated in the upstairs hall and should acquaint themselves with the rules of the Royal Solent Yacht Club, particularly those concerning dress.

# The Royal Solent Yacht Club Taittinger Regatta

## Saturday 30<sup>th</sup> & Sunday 31<sup>st</sup> July 2016

### SAILING INSTRUCTIONS

Times throughout are British Summer Time.

#### TIDES:

Saturday 30th July	HW Portsmouth	08.58	4.2
	LW Portsmouth	14.30	1.5
	HW Portsmouth	21.30	4.4
Sunday 31 <sup>st</sup> July	HW Portsmouth	10.02	4.3
	LW Portsmouth	15.29	1.3

#### 1. RULES

- 1.1 Racing will be governed by the Rules as defined in the current *Racing Rules of Sailing* (RRS).
- 1.2 Regulation 2.0 & 2.1 of the UK Folkboat Association shall apply and Folkboats are permitted to use spinnakers as permitted by Class Rule 9.01.
- 1.3 Rules banning the use of spinnakers set on an articulated pole as expressed from time to time in Old Gaffers Association Sailing Instructions shall not apply. Gaffers are allowed to use spinnakers.
- 1.4 For all classes, the Two Turn Penalty is modified to a One Turn Penalty, so that only one turn including one tack and one gybe is required. This changes RRS 44.1
- 1.5 ISAF Offshore Special Regulations Category 4 shall apply to all IRC boats, with the exception of OSR 4.26.4 (c) and (g) (compulsory trysails) for all boats and OSR 3.14 (lifelines, stanchions and pulpits) for IRC Classic Cruisers.
- 1.6 RRS 52, Manual Power, shall not apply.
- 1.7 IRC Rule 22.4 shall not apply. There are no limitations on crew number or weight.
- 1.8 RRS 35, Time Limits, are changed in these sailing instructions in 11.
- 1.9 With the permission of the IRC Rating Authority, IRC Rule 8.2 is modified to include GBR boats holding Limited Validity IRC TCCs in all IRC classes:

#### 2. NOTICES TO COMPETITORS

- 2.1 Notices to competitors will be posted on the official notice board located in the foyer of the RSYC.

#### 3. CHANGES TO SAILING INSTRUCTIONS

- 3.1 Any change to the sailing instructions will be posted on the official notice board in the RSYC by 08:30 each day.
- 3.2 Oral changes to the Sailing Instructions will be given on the water from the principal committee boats by VHF Radio.
- 3.3 Boats shall keep radio watch from 55 minutes before the warning signal.
- 3.4 The race committee may communicate changes to sailing instructions, time checks, committee boat descriptions and locations, courses and other information over the relevant VHF Channel.

3.5 Failure to receive a change of sailing instructions or any other information by VHF radio will not be grounds for redress. RRS 90.2(c) refers.

#### 4. VHF COMMUNICATIONS

4.1 VHF communications will be made to White Group competitors on VHF Channel 4 and to Black Group competitors on VHF Channel 22. **Competitors cannot transmit on these channels.**

4.2 Competitors can *only* communicate with the race officers White Group by VHF Channel 37 [M1] and Black Group on VHF Channel 77.

4.3 All boats are required to carry an operational VHF radio at all times while racing. For boats with class rules that prohibit the use of VHF radio, there shall be no penalty for breaching the class rule while complying with this sailing instruction.

4.4 **Retiring boats** must call their Class Finish Vessel on VHF White Group by VHF Channel 37 [M1] and Black Group on VHF Channel 77.

4.5 Non-Emergency Assistance may be requested from RSYC Race Control via VHF Channel 37 [M1] and VHF Channel 77.

#### 5. SIGNALS MADE ASHORE

5.1 Signals made ashore will be displayed on the RSYC flagstaff.

5.2 When flag AP is displayed ashore, one minute is replaced with 'not less than 60 minutes'. This changes the AP section of Race Signals.

#### 6. SCHEDULE OF RACES

6.1 Each class, except Gaffers, is scheduled to have two races on Saturday and one on Sunday. Gaffers are scheduled to have one race on each day. If one or both races on Saturday are not run, a second race may be run on Sunday. If the race committee decides to attempt a second Sunday race a notice will be placed on the notice board no later than 19:00 the previous day.

##### 6.2 Black Group

Saturday 30 <sup>th</sup> and Sunday 31 <sup>st</sup> July	Warning Signal
Div 1 IRC Handicap [1.040 – 1.300]	10.00
Div 2 IRC Handicap [1.000 – 1.039]	10.10
Div 3 IRC Handicap [0.924 – 0.999]	10.20
Div 4 IRC Handicap [0.780 – 0.923]	10.30
Sigma 38	10:40
Contessa 32	10.50
Swan Class & IRC Classic Cruisers	11:00

On Saturday 30<sup>th</sup>, Race 2 will follow as soon as practicable after the completion of Race 1.

### 6.3 **White Group**

Saturday 30 <sup>th</sup> and Sunday 31st July	<b>Warning Signal</b>
J24s	09.55
Folkboat	10.05
XOD	10.15
Gaffers	10.25
RYA NHC Class: <b>Div.1. [0.950 and above]</b>	10.35
J80, RYA NHC Class: <b>Div.2. [up to 0.949]</b>	10.45
YOD (Sunday Only)	10.55

On Saturday 30th, Race 2 will follow as soon as practicable after the completion of Race 1.

- 6.4 When there has been a long postponement and when more than one race (or sequence of races) will be held the warning signal for the first race and the succeeding race will be made as soon as practicable. To alert boats that a race or sequence of races will begin soon, an orange flag will be displayed with one sound signal for at least four minutes before the AP is lowered.
- 6.5 On Sunday no warning signal will be sounded after 15:00.
- 6.6 There shall be no race unless two boats start.

## 7. **RACING AREAS**

- 7.1 The racing area is within the Western Solent and its Western approaches, part of which is encompassed by the plan shown in Appendix 1.

## 8. **COURSES**

- 8.1 Boats shall pass to the south of all booms, beacons and posts in the Lymington river entrance including the RLYC starting platform excepting JACK IN THE BASKET which may be passed on either side.
- 8.2 Boats shall not pass through the barrier south of Durn's point which is an obstruction to sea room.
- 8.3 Boats in whatever direction they are racing shall pass to the Northwards of a spherical White buoy situated to the southeast of the inner trot of moorings located to the west of Yarmouth Pier.
- 8.4 Courses will be displayed at or before the warning signal in a frame on the relevant committee boat. Letters or numbers on a red background indicate that such marks of the course shall be rounded to port and letters or numbers on a green background indicate that marks shall be rounded to starboard. The numeric or alphabetical designations of marks used are shown in the Appendices at the end of the sailing instructions.
- 8.5 When two or three diamonds are displayed with the course signal, the course shall be sailed two or three times respectively. Boats shall pass through the 'Gate' formed by the Committee Boat and a Distance Mark, from the direction of the previous mark on the completion of each round except the final round when boats shall sail directly from the last mark of the course to the designated finish line.
- 8.6 When '□' is displayed as a part of the course signal, it indicates that boats shall pass through the 'Gate' described in 8.5 above, from the direction of the previous mark.
- 8.7 Courses may be announced on the relevant VHF Channel.

## 9. THE STARTS

9.1 Boats whilst racing should fly their Class Flag and the Regatta Pennant on their backstay, apart from XOD, and YOD. If no permanent backstay is present, the flag should be flown prominently from the rig, gallows or similar structure.

9.2 **Black Group Class Flags shall be as follows:**

Div 1 IRC Handicap	NP 1
Div 2 IRC Handicap	NP 2
Div 3 IRC Handicap	NP 3
Div 4 IRC Handicap	NP 4
Sigma 38	NN1
Contessa 32	G
Swan Class, IRC Classic Cruisers	NP 0

9.3 **White Group class flags shall be as follows:**

J24	J
Folkboat	F
XOD	W
Gaffers	R
RYA NHC Class: <b>Div.1. [0.950 and above]</b>	NP 6
RYA NHC Class: <b>Div.2. [up to 0.949]</b>	NP7
YOD	NN2

9.4 The starting line for both Groups is formed by a line between an orange flag on the Committee Boat and the course side of the outer distance mark.

9.5 The White Group Committee Vessel, *Countdown*, is a barge with navy blue topsides and a white doghouse with a raised aft steering position and will be identified with a Royal Solent Yacht Club Flag/Burgee and a white dodger bearing the words 'Committee Boat'.

The Black Group Committee Boat is *Gemini Breeze* and will be identified with a Royal Solent Yacht Club Pennant/Burgee and a white dodger bearing the words 'Committee Boat'.

9.6 Races will be started by using RRS 26 with the warning signal made 5 (five) minutes before the starting signal.

9.7 Before a boat's first start of each day, she shall pass by her group committee boat so that her sail number is clearly visible to the race committee.

9.8 A pin end boat may be used to identify boats OCS at the start.

## 10. THE FINISH

10.1 The finish line will be between the last mark of the course and a staff displaying a Blue flag on the Finishing Committee Vessel. Black Group finishing boat is '*Albafar*' – Broom Motor Boat white hull. White Group finishing boat will be '*Niobe*' a Moody 39 - Ketch rig, white hull. Both boats will be identified with RSYC Flags/banners and a large Blue Finish Flag. In the event of a shortened course, any other finishing vessel will carry the appropriate RSYC Flags/banners and large Blue Finish Flag.

## 11. TIME LIMITS

### 11.1 Black Group time limits are as follows:

Black Group	Saturday Race 1	Saturday Race 2	Sunday Race
All classes	2 hours 30 mins	2 hours 30 mins	3 hours

### 11.2 White Group time limits are as follows:

White Group	Saturday Race 1	Saturday Race 2	Sunday Race
Gaffers	5 Hours		3 hours
All other classes	2 hours 30 mins	2 hours 30 mins	3 hours

11.3 The time limit for each race shall be 45 minutes after the first boat to finish, except Gaffers on Saturday when the time limit is 5 hours. Boats that do not finish within the time limit shall be scored DNF. If no boat finishes within 2 hour 30 minutes (Saturday), Gaffers 5 hours (Saturday); 3 hours (Sunday) of her start time the race shall be abandoned. This changes RRS 35.

11.4 In the event of two races being attempted on Sunday (as per Notice of Race para. 6.2) revised time limits will be published and posted on the notice board no later than 1900 the previous day. This changes RRS 35.

## 12. PROTESTS AND REQUESTS FOR REDRESS

12.1 Protests must be communicated to the committee boat or the Regatta Office in the Royal Solent Yacht Club (01983 760 256) within the time limit. For each class, **the protest time limit is 60 minutes after the last boat has finished** the last race of the day. Protests shall be in writing on RYA protest forms, available at the Regatta Office and on the Royal Solent Yacht Club web site. Notices will be posted within 90 minutes of the protest time limit to inform competitors of hearings.

## 13. SAFETY REGULATIONS

13.1 **Boats that retire** shall notify their Committee Finish Vessel as soon as possible.

13.2 **Non-Emergency Assistance** may be requested from RSYC Race Control via VHF Channel 37 [M1] and VHF Channel 77.

## 14. SCORING SYSTEM

14.1 The low point scoring system will be used except that there will be no discard. This changes RRS Appendix A2.

14.2 The number of races required to complete the series are specified in the NOR.

## 15. PRIZES

15.1 Prizes for each class will be presented at the Prize Giving on Sunday 31st July at the Royal Solent Yacht Club.

15.2 A Jeroboam of Taittinger Champagne will be awarded to the overall winner of the Regatta.

15.4 A Bottle of Taittinger Champagne will be awarded to each overall class winner.

- 15.5 The first Saturday XOD Race will count for the Allot Cup. The last race on Saturday will count as Persephone 2; therefore if there is no second race, the first and only race will count as Persephone 2. The Sunday XOD Race will count for the Allot Cup.
- 15.6 Saturday 30<sup>th</sup> July is Day 2 of the IRC Solent Region Championship.



## **16. HAUL-OUT RESTRICTIONS**

- 16.1 Keelboats shall not be hauled out during the regatta except with and according to the terms of prior written permission of the race committee.

## **17. RISK STATEMENT**

- 17.1 Rule 4 of the RRS states: “The responsibility for a boat’s decision to participate in a race or to continue to race is hers alone.” Sailing is by its nature an unpredictable sport and therefore inherently involves an element of risk. By taking part in the event, each competitor agrees and acknowledges that:
- (a) They are aware of the inherent element of risk involved in the sport and accept responsibility for the exposure of themselves, their crew and their boat to such inherent risk whilst taking part in the event;
  - (b) They are responsible for the safety of themselves, their crew, their boat and their other property whether afloat or ashore;
  - (c) They accept responsibility for any injury, damage or loss to the extent caused by their own actions or omissions;
  - (d) Their boat is in good order, equipped to sail in the event and they are fit to participate;
  - (e) The provision of a race management team, patrol boats and other officials and volunteers by the race organiser does not relieve them of their own responsibilities;
  - (f) The provision of patrol boat cover is limited to such assistance, particularly in extreme weather conditions, as can be practically provided in the circumstances;
  - (g) For offshore races, they are responsible for ensuring that their boat is equipped and seaworthy so as to be able to face extremes of weather; that there is a crew sufficient in number, experience and fitness to withstand such weather and that the safety equipment is properly maintained, stowed and in date, and is familiar to the crew .

## **18. INSURANCE.**

Each participating boat shall be insured with valid third-party liability insurance with a minimum cover of £2,000,000 (two million pounds) per event or the equivalent.

## **19. FURTHER INFORMATION**

### **SAILCARE**

Sailmakers ‘Sailcare’ will undertake sail repairs and will be in the RSYC carpark from 1630 -1800 hrs on Saturday. Anybody wishing to utilise this service should call Jerry on 07717507612



## OFFICERS OF THE ROYAL SOLENT YACHT CLUB

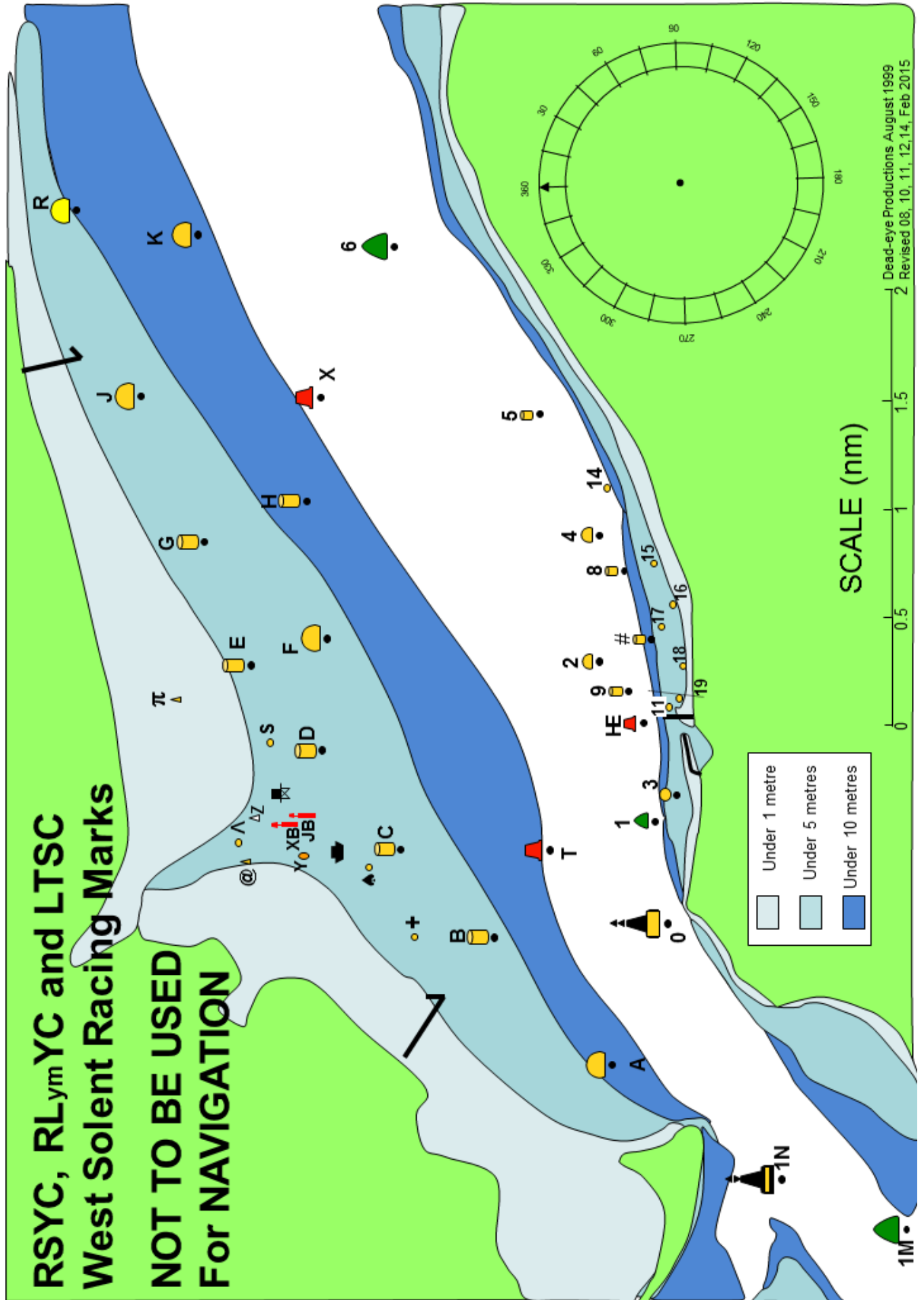
Commodore	Anthony Walton
Vice Commodore	George Alford
Regatta Chairman	Dick Dawson
Rear Commodore (Sailing)	Nicholas Measor
Rear Commodore (House)	Caroline Norris
Chief Race Officer	Jeremy Willcock
Senior Race Officer (Black)	Simon Hand
Senior Race Officer (White)	Mark Hall
Protest Committee Chairman	Peter Kingston
Secretary	Hamish Fletcher
Hon. Sailing Secretary	Peter Spink

## USEFUL INFORMATION

RSYC Sailing Office	01983 766140
RSYC Office Telephone Numbers	01983 760256
RSYC Caterer	01983 760110
RSYC e-mail	<a href="mailto:office@royalsolent.org">office@royalsolent.org</a>
Web site	<a href="http://www.royalsolent.org">www.royalsolent.org</a>
BLACK - Race Control	VHF Ch. 77
WHITE - Race Control	VHF Ch. 37 (M1)
Yarmouth Harbour Office	01983 760321 or VHF Ch.68.
Harbour Water Taxi	07969 840173 or VHF Ch.15.

ADDRESS: The Royal Solent Yacht Club, Yarmouth, Isle of Wight. PO41 0NS.

**RSYC, RL<sub>ym</sub>YC and LTSC  
West Solent Racing Marks  
NOT TO BE USED  
For NAVIGATION**



Dead-eye Productions August 1999  
2 Revised 08, 10, 11, 12, 14, Feb 2015

RACING MARKS 2016					
	Name	Sponsor	N Lat	W Long	
1E(W)	Christchurch Ledge		50.41.60	01.41.50	Yellow Sphere
1G(W)	SW Shingles		50.39.29	01.37.52	Red Pillar
1H(W)	Bridge		50.39.63	01.36.88	YBY Pillar
1J(W)	Shingles Elbow		50.40.36	01.36.05	Red Can
1K(W)	North Head		50.42.68	01.35.51	Green Can
1N	NE Shingles		50.41.96	01.33.40	East Cardinal
1M	Warden		50.41.48	01.33.55	Green Can
A	Hurst	Echopilot	50.42.79	01.32.53	Yellow Sphere
B	Pennington	Dunford	50.43.38	01.31.54	Yellow Cylinder
C	Oxey	Colten	50.43.83	01.30.86	Yellow Cylinder
D	Royal Lymington	Yacht Haven	50.44.17	01.30.10	Yellow Cylinder
E	Pylewell	Folkboats UK	50.44.58	01.29.43	Yellow Cylinder
F	Berthon	Berthon	50.44.20	01.29.22	Yellow Sphere
G	Tanners	Bridgefords	50.44.79	01.28.47	Yellow Cylinder
H	Jackson	Paul Jackson	50.44.30	01.28.16	Yellow Cylinder
J	Sowley	Zwerver	50.45.11	01.27.33	Yellow Sphere
K	Quod Possumus!	Quod Possumus!	50.44.83	01.26.09	Yellow Sphere
R	Durns	Durns	50.45.43	01.25.89	Yellow Sphere
T	Lymington Bank		50.43.10	01.30.85	Red Can
X	Solent Bank		50.44.23	01.27.37	Red Can
0	Sconce		50.42.52	01.31.43	North Cardinal
1	Black Rock		50.42.53	01.30.43	Green Cone
2	George Hotel	The George Hotel	50.42.86	01.29.40	Yellow Sphere
3	Folkboats Forever	Yarmouth Folkboats	50.42.47	01.30.43	Yellow Sphere
4	The English Summer Berry Co	The English Summer Berry Co	50.42.86	01.28.42	Yellow Sphere
5	Caldwells	Caldwells Estate Agents	50.43.15	01.27.49	Yellow Cylinder
6	Hamstead Ledge		50.43.86	01.26.18	Green Cylinder
8	Bouldnor	Harwoods	50.42.73	01.28.69	Yellow Cylinder
9	Royal Solent YC ODM	Charles Stanley	50.42.72	01.29.70	Yellow Cylinder
HE	East Fairway Buoy		50.42.64	01.29.88	Red Can
#	Towers		50.42.63	01.29.26	Yellow Pillar
3A(E)	West Lepe		50.45.23	01.24.09	Red Can
3C(E)	Cratinsure.com		50.45.64	01.23.12	Yellow Sphere
3D(E)	Saltmead		50.44.52	01.23.04	Green Conical
3G(E)	SevenStar Yacht Trans		50.46.58	01.21.46	Yellow Sphere
3H(E)	East Lepe		50.45.93	01.21.07	Red Can
3L(E)	Gurnard Ledge		50.45.51	01.20.59	Green Conical
3N(E)	Quinnell		50.47.07	01.19.88	Yellow Sphere
33(E)	Prince Consort		50.46.42	01.17.55	North Cardinal
<b>LYMINGTON SHORE</b>					
+	Plus Mark	BHG	50.43.78	01.31.53	Yellow Sphere
♣	West Mark	Scott Bailey	50.43.99	01.30.99	Yellow Sphere
	Baverstock	Lymington Town SC	50.44.17	01.30.86	♣
JB	Jack in the Basket		50.44.28	01.30.57	Red Post
XB	Cross Boom		50.44.36	01.30.58	Red Post
Y	Black & Orange		50.44.31	01.30.81	Black/Orange Sphere
@	West Reach	Jeremy Rogers Yacht	50.44.59	01.30.92	Yellow Cone
Λ	East Reach		50.44.63	01.30.80	Yellow Cylinder
Z	Black & White	Ropewalk Marine	50.44.51	01.30.56	Black/White Cone
	RLYC Platform	Royal Lymington YC	50.44.42	01.30.42	
S	East Mark	Sanders Sails	50.44.51	01.30.00	Yellow Sphere
π	Pylewell Inner		50.44.92	01.29.70	Yellow Cone
<b>YARMOUTH SHORE</b>					
11	Delphie	Delphie Lakeman Trust	50.42.48	01.29.94	Yellow Sphere
14	Stone pier	XOD Yarmouth	50.42.82	01.28.05	Yellow Sphere
15	Hallmark		50.42.63	01.28.70	Yellow Sphere
16	St Swithins		50.42.52	01.28.99	Yellow Sphere
17	Camel		50.42.57	01.29.17	Yellow Sphere
18	Mount		50.42.44	01.29.43	Yellow Sphere
19	Dinghy ODM		50.42.44	01.29.82	Yellow Sphere
<b>MARKS NOT CHARTED</b>					
M	Moveable mark				Orange Inflatable
N	Moveable windward mark				Orange Inflatable
	Gate - start/finish line when used to mark the end of a round and not the finish				
	<b>(E) – off chart to the East, (W) – off chart to the West</b>				

### Marks off the Club Chart

	No	Name	type	N. Lat	N. Long
<b>WEST</b>					
	1E	Christchurch Ledge	Yellow Sphere	50 41.56	01 41.50
	1G	SW Shingles	Red Pillar	50 39.35	01 37.45
	1H	Bridge	YBY Pillar	50 39.63	01 36.88
	1J	Shingles Elbow	Red Can	50 40.36	01 36.05
	1K	North Head	Green Can	50 42.68	01 35.51
	1N	NE Shingles	East Cardinal	50 41.96	01 33.40
	1M	Warden	Green Can	50 41.48	01 33.55
<b>EAST</b>					
	3A	West Lepe	Red Can	50 45.23	01 29.26
	3C	cratfinsure.com	yellow	50 45.64	01 23.12
	3D	Saltmead	Green Can	50 44.52	01 23.04
	3G	Sevenstar Yacht Trans	yellow	50 46.58	01 21.46
	3H	East Lepe	Red Can	50 45.93	01 21.07
	3L	Gurnard Ledge	Green Can	50 45.51	01 20.59
	3N	Quinnel	Yellow	50 47.07	01 19.88
	33	Prince Consort	North Cardinal	50 46.41	01 17.56