



# Standard Sailing Instructions

2019

Royal Solent Yacht Club  
Yarmouth, Isle of Wight

# **Royal Solent Yacht Club**

*Royal Solent Yacht Club is a trading name of Royal Solent Yacht Club Ltd*

*Registered Office, Yarmouth, Isle of Wight, PO41 0NS*

*Registered in England No 05272681*

Commodore	Anne Kyle
Vice Commodore	Martyn Collinson
Rear Commodore (Sailing)	Katie Davies
Rear Commodore (House)	Miles Peckham
Secretary	Claire Hallett
Sailing Secretary /CRO	Jeremy Willcock

## **Telephone Numbers**

Secretary	(01983) 760256
Members	(01983) 760239
Caterer	(01983) 760110
Fax	(01983) 761172

Email: [sailing@royalsolent.org](mailto:sailing@royalsolent.org)

Web Site: [www.royalsolent.org](http://www.royalsolent.org)

# **Royal Solent Yacht Club**

*Royal Solent Yacht Club is a trading name of Royal Solent Yacht Club Ltd*

*Registered Office, Yarmouth, Isle of Wight, PO41 0NS*

# NOTICES TO COMPETITORS

## VISITORS

The Flag Officers and Members of the Royal Solent Yacht Club extend a warm welcome to competitors as visitors to the Club. They are requested to sign and enter their name and address in the Visitors' Book situated on the first floor landing and should acquaint themselves with the Bye-Laws of the Royal Solent Yacht Club, posted on the Club notice board, particularly those concerning dress.

## AVOIDING POSSIBLE COLLISION WITH FERRIES

Competitors are reminded that under rule 9 (b) of the International Regulations for Preventing Collisions at Sea "a vessel of less than 20 metres in length or a sailing vessel shall not impede the passage of any other vessel navigating within a narrow channel or fairway". The approach to Yarmouth Harbour between the Harbour East buoy (The Fairway Buoy) and the Harbour is considered to be a fairway.

**Ferries have extreme difficulty in strong winds and tides when approaching or leaving Yarmouth Harbour and competitors should err on the side of safety and give way early if there is any possible doubt.**

## RYA RACING CHARTER

Competitors should note that the Royal Solent Yacht Club implements the RYA Racing Charter and that they will be required to undertake to sail in accordance with the charter, which can be found in the front pages of the RYA Rule Book (Racing Rules of Sailing 2017-2020 or at [www.rya.org/racing/charter](http://www.rya.org/racing/charter)).

## ENTRY FORM

All competitors **MUST** complete and sign the form and return it to the Sailing Secretary **prior to taking part in their first race of the season**. It is essential that this form is completed in **FULL**.

## ABBREVIATIONS

RRS: the Racing Rules of Sailing 2017-2020

SSI: the Royal Solent Yacht Club Standard Sailing Instructions [2019](#)

Supp SIs: the Royal Solent Yacht Club Supplemental Sailing Instructions [2019](#)

NFIA– Nordic Folkboat International Association

# Royal Solent Yacht Club

## STANDARD SAILING INSTRUCTIONS

### 2019

#### 1. ORGANISING AUTHORITY

- 1.1 The Organising Authority is the Royal Solent Yacht Club.

#### 2. RULES

- 2.1 Races will be governed by the Rules as defined in the Racing Rules of Sailing 2017-2020 the Race Entry form and these Sailing Instructions
- 2.2 Race Visual signals may be used.
- 2.3 RRS 35 is changed by SSI 10.1, RRS 60 is changed by SSI 11.3, RRS 77 is changed by SSI 6.1.
- 2.4 RRS 32.1 is changed by adding paragraph 32.1(e) : ***for any reason deemed necessary by the Race Committee.***
- 2.5 RRS 60.2 is changed by adding paragraph 60.2(d) : ***disqualify without a hearing any boat observed by at least two members of the Race Officer team to have sailed an incorrect course.*** This amends RRS 63.1.
- 2.6 Penalty System RRS 44.1 is changed so that the two turn penalty is replaced by a one turn penalty.
- 2.6.1 A boat that does not race because of Race Officer duties shall be awarded her average points for the relevant series.
- 2.6.2 All boats shall comply with their Class Rules unless changed by these Sailing Instructions, the Supplemental Sailing Instructions or Notice of Race.
- 2.6.3 Folkboats are permitted to use spinnakers as per UK Folkboat Association Class Racing Regulations Part II 1.4 and there will be no penalty for Folkboats that do not comply with NFIA Rule 13.10 (Crew Limitations) [or](#) NFIA Class Rule 8.20 (headsail furling).
- 2.7 For IRC boats IRC Rule 22.4.2 shall not apply. There are no limitations on crew number or weight except as required for boats rated as one designs which shall comply with IRC Rule 22.4.1
- 2.8 Boats may be required to display an event pennant over their class flag whilst racing.
- 2.9 Boats may be inspected at any time for compliance with the Racing Rules of Sailing.
- #### 3. CONDITION OF ENTRY/ELIGIBILITY
- 3.1 Boats may be disqualified, at the discretion of the Chief Race Officer, [if](#) the owner/person in charge has not completed, signed and returned the RSYC Race Entry Form to the RSYC Sailing Office prior to that boat's first

race of the season. The Entry Form need only be completed once per year; supplementary entry forms are required for some events as specified in Supp SI.

- 3.2 Throughout these Sailing Instructions, the Supplemental Sailing Instructions and Notices of Race reference to Folkboat shall be deemed to mean Nordic and British Folkboats that comply with NFIA Rules and UK Class Rules and Regulations.

#### **4. SCHEDULE OF RACES /MINIMUM ENTRY/START AND FINISH LINES**

- 4.1 The schedule of races, the classes to race, the order, the date of races and the time of the starting and/or warning signals will be published in the Royal Solent Yacht Club Programme of Races and/or on the Club notice board, and/or in a separately issued Notice of Race and/or in the Supp SI.
- 4.2 There will be no race unless a minimum of two boats start in a race. Classes may be combined at the Race Officers discretion.
- 4.3 **Start and finish lines**, whether committee boat, shoreline (Grants) or shore-line (Club Balcony), will be designated by Numeral Pennants flown from the Club's main flagstaff.
- a) Numeral Pennant '0' for starting and finishing races from Grants.
  - b) Numeral Pennant '9' for races starting from a committee boat and finishing at Grants.
  - c) Numeral Pennant '8' for starting and finishing races from a committee boat.
  - d) Numeral Pennant '6' for races starting at Grants and finishing on the Club Balcony line.

See SSI 8 for Course Instructions, SSI 9 for Start Instructions and SSI 10 for Finish Instructions specific to each start and finish line.

#### **5. CLASS FLAGS & ENSIGNS**

- 5.1 All Class 1 & 2 boats shall fly their designated class flag.
- 5.2 Ensigns shall be struck prior to the preparatory signal.

#### **6. DISTINGUISHING MARKS**

- 6.1 Under exceptional circumstances, the Race Committee may permit a boat to use sails carrying distinguishing marks other than those required by RRS 77. Competitors should seek such permission from the Race Committee in good time and stating reason for the request.

#### **7. AMENDMENTS**

- 7.1 Amendments to sailing instructions made on the day of racing will be

posted on the notice board located opposite the Sailing Office, not later than one and a half hours before the start of a relevant race and notified by flying **Flag 'L'** from the signal flagstaff at the RSYC starting line at Grants and/or on the RSYC flagstaff situated on the Club jetty.

- 7.2 Any information displayed at the Club will if possible be displayed on the Royal Solent Yacht Club's website-www.royalsolent.org or will be available by phoning the Secretariat on 01983 760256 or contacting the class captain. In the event of bad weather on the morning of the race competitors are advised to check via one of these methods. Failure to display information on the Club's website or not being able to contact a class captain, will not be grounds for redress.

## **8 COURSE INSTRUCTIONS**

- 8.1 Course instructions and general information may be transmitted on VHF Channel 37A [M1] at the discretion of the Race Committee. Failure of any boat to receive any such transmissions shall not be regarded as grounds for any protest or any request for redress.
- 8.2 Boats in whatever direction they are racing, other than Dinghy Classes, shall pass to the South of:
- a) The Royal Lymington Yacht Club starting platform.
  - b) Cross Boom
  - c) Jack in the Basket  
and all other booms, beacons and posts in the Lymington River Entrance.
  - d) the barrier and beacon South of Durns Point.
- 8.3. Courses will be selected from the navigational buoys and racing marks which have been allocated code letters, numbers or symbols as shown on pages 12 and 13 herein.

### Course started from Committee Boat

The course to be sailed will be displayed at or before the warning signal in a frame on the main committee boat. Letters, numbers or symbols on a red background indicate that such marks shall be rounded to port and similarly, letters, numbers or symbols on a green background indicate that such marks shall be rounded to starboard.

### 8.4 Course started from Grants

The course to be sailed will be displayed at or before the warning signal at Grants in the frame Eastwards of the signal flagstaff when the sequence of letters, numbers or symbols displayed shall be read from top left to bottom right.

Red letters, numbers or symbols displayed on either a black or white background indicate that such marks of the course shall be rounded to port. Green letters, numbers or symbols displayed on either a black or a white background indicate that such marks of the course shall be rounded to starboard.

- 8.5 When two or three white diamond shapes are displayed with the course signal, the course shall be sailed two or three times round respectively. Boats shall pass through the gate formed by the committee boat or the Grants Inner White Post and a Distance Mark, from the direction of the previous mark, at the end of each round before commencing the next round.
- 8.6 When '□' is displayed as part of the course signal, it indicates that boats shall pass through the gate described in 8.5 above from the direction of the previous mark.
- 8.7 **When 'S' flag over 'H' flag** is displayed by a committee boat adjacent to a mark of the course it denotes that boats shall pass that mark in the required manner and shall then proceed directly to cross the finishing line in the direction from that mark. The committee boat may make repeated sound signals to draw attention to the visual signal.
- 8.8 Boats in whatever direction they are racing, shall pass to the North of a spherical white buoy situated to the southeast of the inner trot of Moorings, located to the west of Yarmouth Pier.
- 8.9 Direction of the Course from the last Mark - **Grants & the Club Line.**

Boats finishing at the Grants finishing line and the Club balcony line from 'E' (Pylewell), F' (Berthon) and all marks that are both to the east of these and to the north of the deep water navigation channel in the Solent shall finish by crossing the finishing line from east to west.

Boats finishing at the Grants finishing line and the Club Balcony from 'D' (RLYC ODM) and all marks that are both to the west of this mark and to the north of the deep water navigation channel in the Solent shall finish by crossing the finishing line from west to east. 19 is to the west of Grants when 19 is a mark of the course.

## 9. **STARTING**

### 9.1 Starting Line (Grants)

The starting line at Grants is approximately 200 metres to the east of the Royal Solent Yacht Club. The starting line is formed by bringing the signal flagstaff bearing a horizontally striped orange and white diamond shape into line with a white post topped with a white diamond framed orange cross which is about 15 metres to seawards from the sea wall.

### 9.2 Limit Marks (Grants)

- (a) The inner limit mark for all races is the seaward post with a diamond shaped top of the starting line transit. Please note that this mark may not necessarily be in water deep enough for some boats.
- (b) The outer limit mark for all races, (except for dinghy classes), is a yellow cylindrical buoy marked with '9' in black, Rouse Ltd in black thereon with a yellow X topmark, located approximately 450 metres northwards of the signal flagstaff.
- (c) The outer limit mark for dinghy classes is a yellow buoy with '19' thereon and a yellow top mark about 120 metres northwards of the signal flagstaff.

### 9.3 Starting Line (Committee Boat)

- (a) The main committee boat will be identified by a white flag with 'Royal Solent YC Committee' thereon.
- (b) The starting line will be between an orange flag on the committee boat and the course side of the outer distance mark.
- (c) Please note that the distance mark or committee boat may not necessarily be in water deep enough for some boats.

### 9.4 VHF Communications:

- (a) The Race Officers may at their discretion use VHF radios (Channel M1) to broadcast the complete or part thereof of the countdown sequence to the start of a race. Also they may announce the names of boats being recalled. In this event all boats being recalled for a particular start will be announced. This is for assistance to competitors and does not replace the formal starting procedure described in the Notice of Race, SSI, or SuppSI
- (b) Except in an emergency, a boat shall neither make nor receive radio transmissions while racing that is not available to all boats. This restriction also applies to mobile telephones



## 10. FINISHING

### 10.1 Time Limit

RRS 35 is varied in that:

- (a) The time limit for all races shall be 3 hours after the starting signal except for Folkboat, XOD, YOD, Cruisers and Dinghy races held on Sundays and/or Bank Holidays when the time limit shall be 2 hours
- (b) When the first boat in a race finishes within the time limit, the race shall be valid only for those boats in the same race which finish within the time limit or within 30 minutes of the first boat to finish, whichever is the later.
- (c) For races of more than one round when the first boat in her race fails to finish within the time limit, but has completed one or more rounds of the course, the results of the race will be determined by the placings at the end of the last completed round by the first boat.
- (d) When the first boat in her race fails to complete a round of the course, or **pass** through the Gate when ‘□’ is part of the course by the time limit, the race shall be abandoned or abandoned and resailed.

### 10.2 Finishing Line (Grants)

- (a) The finishing line, (except for Dinghy classes), will be an imaginary line between the signal flagstaff and the finishing mark which is the yellow cylindrical buoy (No 9), approximately 450 metres North of the signal flagstaff.
- (b) For Dinghy classes racing from Grants, the finishing line will be an imaginary line between the signal flagstaff and the yellow spherical buoy (No: 19) approximately 120 metres North of the signal flagstaff.

### 10.3 Finishing Line (Committee Boat)

- (a) The finishing line will be between a staff displaying an orange flag on the committee boat and the course side of the finishing line outer distance mark.
- (b) Boats shall cross the finishing line from the direction of the last mark. If an inner limit mark is laid, boats shall pass between it and the outer distance mark.

### 10.4 Finishing Line (Club Balcony) The Finishing line will be an imaginary line between a staff displaying an orange flag on the eastern end of the Club Balcony and the Outer Distance Mark (9).

## 11 PROTESTS

- 11.1 Protests shall be made in accordance with RRS Part 5 and transmitted to the RSYC Secretariat within two hours of the finishing time of the last boat in the last race of the day. Protest forms are available from the RSYC Secretariat.
- 11.2 The time and place of the hearing will be posted on the RSYC notice board and it is the responsibility of the protestor and the protestee to acquaint themselves with this information and to present themselves at the appropriate time with any witnesses they may wish to call. In the event of either party failing to be present at a hearing the protest may be heard in their absence.
- 11.3 The Race Committee or the Protest Committee may initiate a protest as a result of information received from any source concerning contact which has caused damage or injury. This amends RRS 60. In the event of conflict between RRS 60 and this SI, this SI will prevail.

## 12 ARBITRATION

- 12.1 RYA Arbitration of the RYA Rules Disputes Procedures may be available. See Official Notice Board for details.

## 13. RESULTS & NOTICEBOARD

- 13.1 Unless otherwise notified, the results of races will be posted on a RSYC notice board as soon as practicable or placed in the bar.  
The notice board is located outside the Sailing Office, or in the bar.

## 14 SAFETY/RISK STATEMENT/INSPECTION/INSURANCE

- 14.1 The crews of all boats that are not fully decked and are capable of raising the keel, centre-board or dagger-board shall wear lifejackets or other adequate personal buoyancy at all times while afloat.
- 14.2 A boat racing shall, where applicable, comply with its class rules with regard to safety.
- 14.3 Following consultation with the related classes, the Race Committee may initiate '**white sail racing**' (no spinnakers). This will be signalled by hoisting **flag G** and the relevant class flag.
- 14.4 VHF radios capable of receiving channel 37A [M1] must be carried by all Classes except dinghy classes and a listening watch kept at all times; any class rule to the contrary is changed by this SI.
- 14.5 No boat shall race with an anchor protruding beyond its bow/bowsprit or bumkin; any Class rule to the contrary is changed by this SI. A boat shall

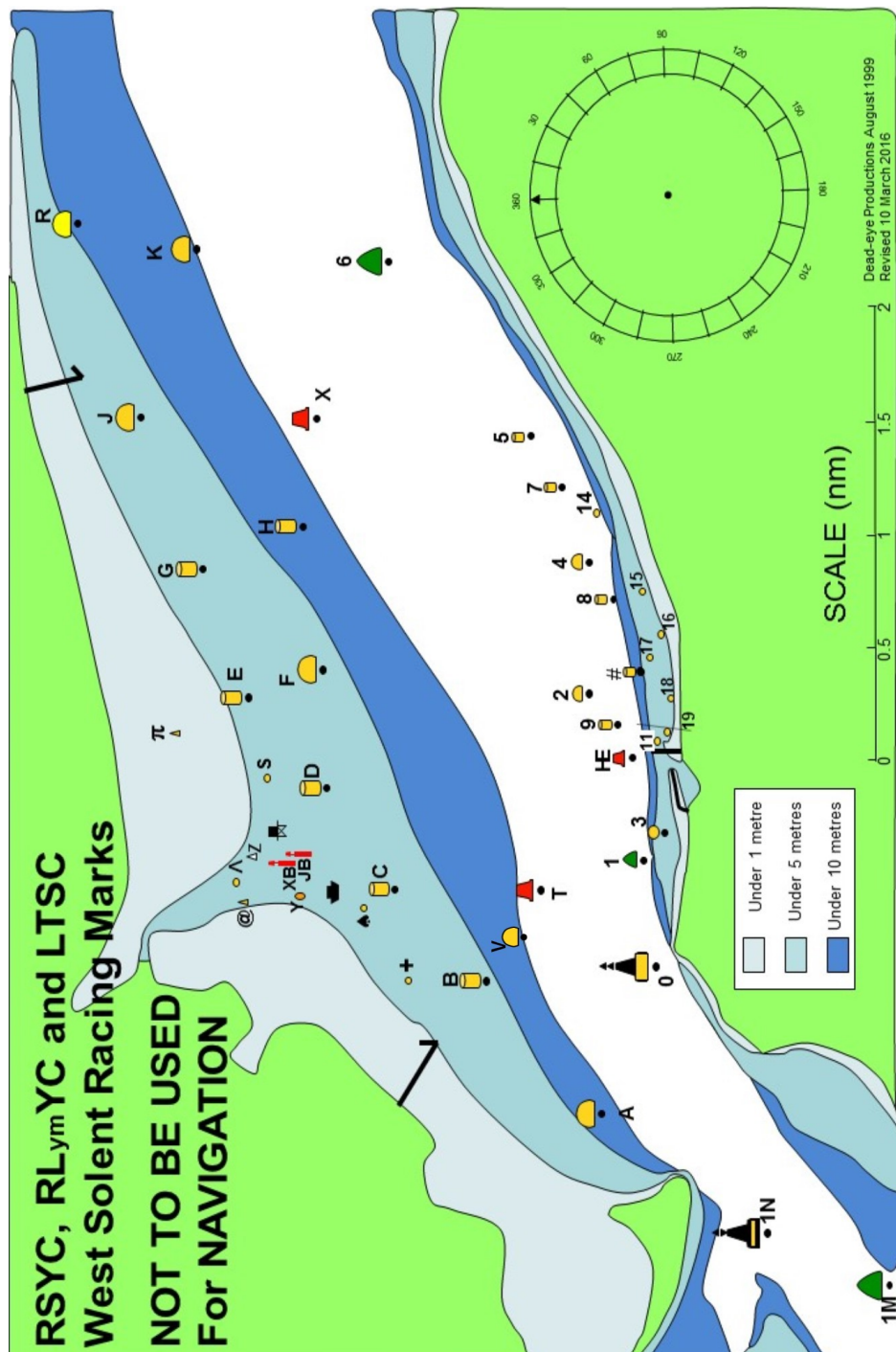
not be disqualified for a breach of this instruction without prior warning and adequate opportunity to make correction.

**14.6 A boat which retires from a race shall make every effort to ensure that the Race Committee is notified as soon as possible and before returning to her berth. FAILURE TO COMPLY MAY RESULT IN DISQUALIFICATION FROM THE SERIES.**

**14.7 Rule 4 of the RRS states:** “The responsibility for a boat’s decision to participate in a race or to continue to race is hers alone.” Sailing is by its nature an unpredictable sport and therefore inherently involves an element of risk. By taking part in the event, each competitor agrees and acknowledges that:

- a) They are aware of the inherent element of risk involved in the sport and accept responsibility for the exposure of themselves, their crew and their boat to such inherent risk whilst taking part in the event
- b) They are responsible for the safety of themselves, their crew, their boat and their other property whether afloat or ashore;
- c) They accept responsibility for any injury, damage or loss to the extent caused by their own actions or omissions;
- d) Their boat is in good order, equipped to sail in the event and they are fit to participate;
- e) The provision of a race management team, patrol boats and other officials and volunteers by the event organiser does not relieve them of their own responsibilities;
- f) The provision of patrol boat cover is limited to such assistance, particularly in extreme weather conditions, as can be practically provided in the circumstances;
- g) It is their responsibility to familiarise themselves with any risks specific to the venue or event drawn to their attention in any rules and information produced for the venue or event and to attend any safety briefing held for the event.
- h) For offshore races, they are responsible for ensuring that their boat is equipped and seaworthy so as to be able to face extremes of weather; that there is a crew sufficient in number, experience and fitness to withstand such weather; and that the safety equipment is properly maintained, stowed and in date and is familiar to the crew.
- i) The fact that race officials may conduct inspections of a boat does not reduce the responsibilities of each competitor set out above.

**14.8 All boats shall have adequate insurance with third party liability of at least £3,000,000 (three million pounds sterling).**



RACING MARKS 2019					
	Name	Sponsor	N Lat	W Long	
1E(W)	Christchurch Ledge		50.41.60	01.41.50	Yellow Sphere
1G(W)	SW Shingles		50.39.29	01.37.52	Red Pillar
1H(W)	Bridge		50.39.63	01.36.88	YBY Pillar
1J(W)	Shingles Elbow		50.40.36	01.36.05	Red Can
1K(W)	North Head		50.42.68	01.35.51	Green Can
1N	NE Shingles		50.41.96	01.33.40	East Cardinal
1M	Warden		50.41.48	01.33.55	Green Can
A	Hurst	Chewton Glen	50.42.79	01.32.53	Yellow Sphere
B	Pennington	Dunford	50.43.38	01.31.54	Yellow Cylinder
C	Oxey	Colten	50.43.83	01.30.86	Yellow Cylinder
D	Royal Lymington	Yacht Haven	50.44.17	01.30.10	Yellow Cylinder
E	Pylewell	Folkboats UK	50.44.58	01.29.43	Yellow Cylinder
F	Berthon	Berthon	50.44.20	01.29.22	Yellow Sphere
G	Tanners	Bridgefords	50.44.79	01.28.47	Yellow Cylinder
H	Jackson	Paul Jackson	50.44.30	01.28.16	Yellow Cylinder
J	Sowley	Zwerver	50.45.11	01.27.33	Yellow Sphere
K	Quod Possumus!	Quod Possumus!	50.44.83	01.26.09	Yellow Sphere
R	Durns	Durns	50.45.43	01.25.89	Yellow Sphere
T	Lymington Bank		50.43.10	01.30.85	Red Can
V	Victor		50.43.30	01.31.30	
X	Solent Bank		50.44.23	01.27.37	Red Can
0	Sconce		50.42.52	01.31.43	North Cardinal
1	Black Rock		50.42.53	01.30.43	Green Cone
2	Charles Stanley	Charles Stanley	50.42.86	01.29.40	Yellow Sphere
3	Folkboats Forever	Yarmouth Folkboats	50.42.47	01.30.43	Yellow Sphere
4	The English Summer Berry Co	The English Summer Berry Co	50.42.86	01.28.42	Yellow Sphere
5	Caldwells	Caldwells Estate Agents	50.43.15	01.27.49	Yellow Cylinder
6	Hamstead Ledge		50.43.86	01.26.18	Green Conical
7	Alitex	Alitex	50.42.97	01.28.16	Yellow Can
8	Bouldnor	Harwoods	50.42.73	01.28.69	Yellow Cylinder
9	Royal Solent YC ODM	Rouse Ltd	50.42.72	01.29.70	Yellow Cylinder
HE	East Fairway Buoy		50.42.64	01.29.88	Red Can
#	Towers		50.42.63	01.29.26	Yellow Pillar
3A(E)	West Lepe		50.45.23	01.24.09	Red Can
3C(E)	Cratinsure.com		50.45.64	01.23.12	Yellow Sphere
3D(E)	Saltmead		50.44.52	01.23.04	Green Conical
3G(E)	SevenStar Yacht Trans		50.46.58	01.21.46	Yellow Sphere
3H(E)	East Lepe		50.45.93	01.21.07	Red Can
3L(E)	Gurnard Ledge		50.45.51	01.20.59	Green Conical
3N(E)	Quinnell		50.47.07	01.19.88	Yellow Sphere
33(E)	Prince Consort		50.46.42	01.17.55	North Cardinal
LYMINGTON SHORE					
+	Plus Mark	BHG	50.43.78	01.31.53	Yellow Sphere
◆	West Mark	Scott Bailey	50.43.99	01.30.99	Yellow Sphere
	Baverstock	Lymington Town SC	50.44.17	01.30.86	●
JB	Jack in the Basket		50.44.28	01.30.57	Red Post
XB	Cross Boom		50.44.36	01.30.58	Red Post
Y	Black & Orange		50.44.31	01.30.81	Black/Orange Sphere
@	West Reach	Jeremy Rogers Yacht	50.44.59	01.30.92	Yellow Cone
Λ	East Reach		50.44.63	01.30.80	Yellow Cylinder
Z	Black & White	Ropewalk Marine	50.44.51	01.30.56	Black/White Cone
	RLYC Platform	Royal Lymington YC	50.44.42	01.30.42	
S	East Mark	Sanders Sails	50.44.51	01.30.00	Yellow Sphere
π	Pylewell Inner		50.44.92	01.29.70	Yellow Cone
YARMOUTH SHORE					
11	Delphie	Delphie Lakeman Trust	50.42.48	01.29.94	Yellow Sphere
14	Stone pier	XOD Yarmouth	50.42.82	01.28.05	Yellow Sphere
15	Hallmark		50.42.63	01.28.70	Yellow Sphere
16	St Swithins		50.42.52	01.28.99	Yellow Sphere
17	Camel		50.42.57	01.29.17	Yellow Sphere
18	Mount		50.42.44	01.29.43	Yellow Sphere
19	Dinghy ODM		50.42.44	01.29.82	Yellow Sphere
MARKS NOT CHARTED					
M	Moveable mark				Orange Inflatable
N	Moveable windward mark				Orange Inflatable
Gate - start/finish line when used to mark the end of a round and not the finish					
(E) – off chart to the East, (W) – off chart to the West					







CHAMPAGNE  
**TAITTINGER**  
*Reims*

